

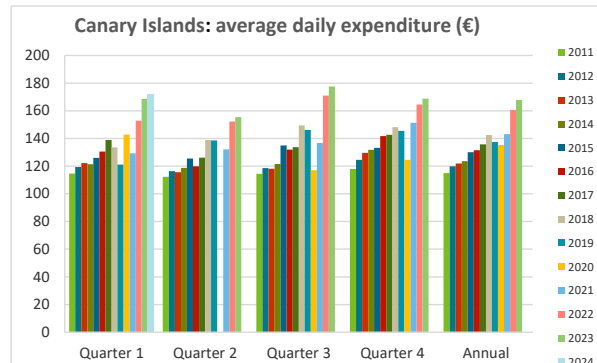
Average daily expenditure

By island of stay

Average daily expenditure (€)

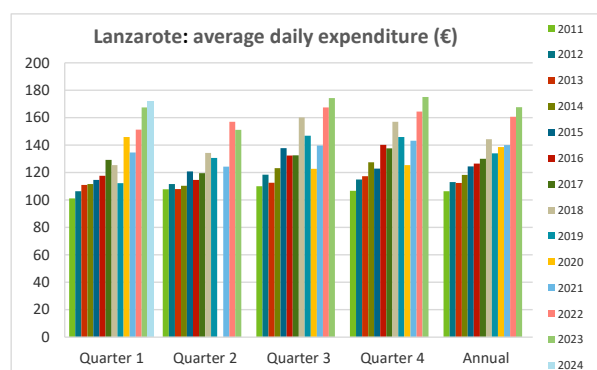
CANARY ISLANDS

	Quarter 1	Quarter 2	Quarter 3	Quarter 4	Annual
2011	114.7	112.3	114.5	117.9	115.0
2012	119.3	116.3	118.5	124.6	119.9
2013	122.2	115.6	118.1	129.5	121.9
2014	121.4	118.8	121.6	131.8	123.6
2015	125.9	125.5	135.0	133.2	130.0
2016	130.5	119.9	132.0	141.7	131.4
2017	138.9	126.2	133.7	142.7	135.7
2018	133.6	138.9	149.5	148.1	142.5
2019	121.0	138.6	146.1	145.5	137.5
2020	142.8		117.1	124.5	135.3
2021	129.3	132.1	136.7	151.3	143.1
2022	152.9	152.2	171.0	164.4	160.5
2023	168.5	155.4	177.6	168.7	167.8
2024	171.6				



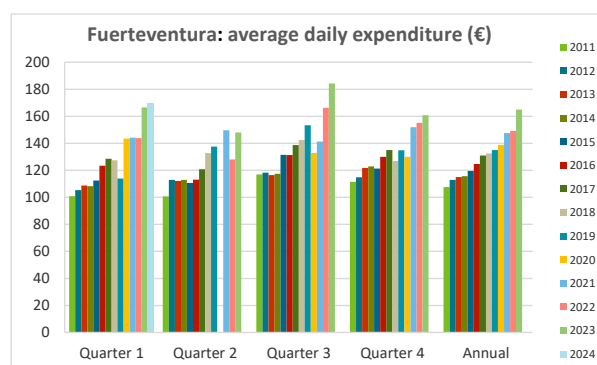
LANZAROTE

	Quarter 1	Quarter 2	Quarter 3	Quarter 4	Annual
2011	101.1	107.9	110.0	106.7	106.4
2012	106.4	111.7	118.5	114.9	113.0
2013	111.0	108.0	112.6	117.4	112.4
2014	111.7	110.4	123.2	127.5	118.3
2015	114.6	120.8	137.8	122.9	124.4
2016	117.7	114.6	132.4	140.2	126.6
2017	129.2	119.6	132.5	137.6	130.0
2018	125.4	134.3	160.1	156.9	144.4
2019	112.3	130.6	146.8	145.9	134.0
2020	145.8		122.7	125.4	138.6
2021	134.6	124.4	139.8	143.2	140.0
2022	151.3	157.0	167.5	164.5	160.7
2023	167.6	151.2	174.4	175.1	167.6
2024	171.6				



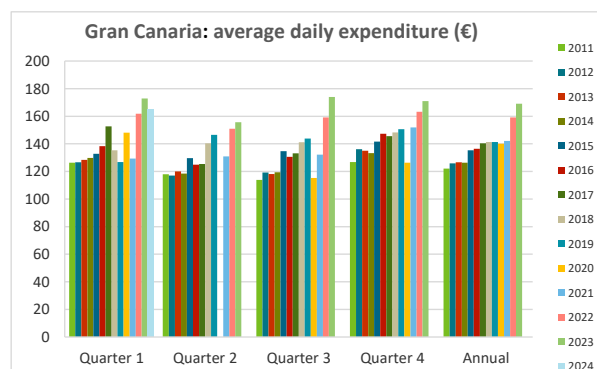
FUERTEVENTURA

	Quarter 1	Quarter 2	Quarter 3	Quarter 4	Annual
2011	100.8	100.7	116.9	111.4	107.6
2012	105.3	112.9	118.2	114.8	112.9
2013	108.7	112.2	116.5	121.7	115.1
2014	108.3	112.9	117.4	122.9	115.6
2015	112.4	110.7	131.4	121.3	119.5
2016	123.4	113.0	131.3	130.0	124.6
2017	128.5	120.8	138.7	135.0	131.0
2018	127.5	132.7	142.3	126.9	132.5
2019	113.9	137.5	153.4	134.9	134.9
2020	143.5		132.8	130.1	138.9
2021	144.2	149.6	141.2	152.0	147.5
2022	143.8	128.1	166.3	155.1	149.2
2023	166.5	148.0	184.3	160.8	164.9
2024	169.8				



GRAN CANARIA

	Quarter 1	Quarter 2	Quarter 3	Quarter 4	Annual
2011	126.3	118.0	113.9	126.8	122.1
2012	126.7	117.0	119.3	136.1	125.9
2013	128.4	120.0	118.2	135.0	126.7
2014	129.7	118.4	119.4	133.2	126.3
2015	132.8	129.6	134.8	141.7	135.3
2016	138.3	124.9	130.6	147.3	136.4
2017	152.7	125.4	133.2	145.6	140.3
2018	135.4	140.3	141.1	148.3	141.3
2019	126.8	146.6	143.8	150.6	141.3
2020	148.1		115.3	126.4	140.1
2021	129.3	130.8	132.2	151.8	142.0
2022	161.8	150.9	159.1	163.2	159.1
2023	172.8	155.7	174.0	170.9	169.0
2024	164.8				

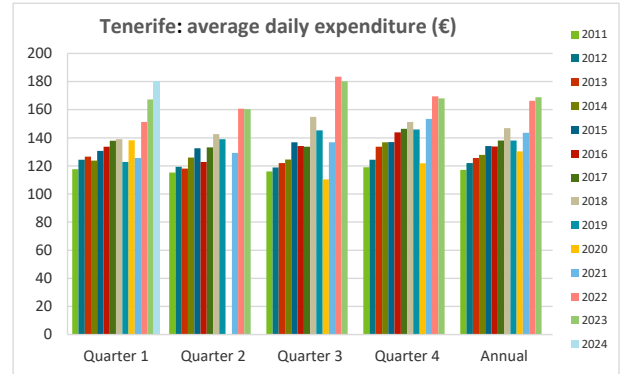


Average daily expenditure By island of stay



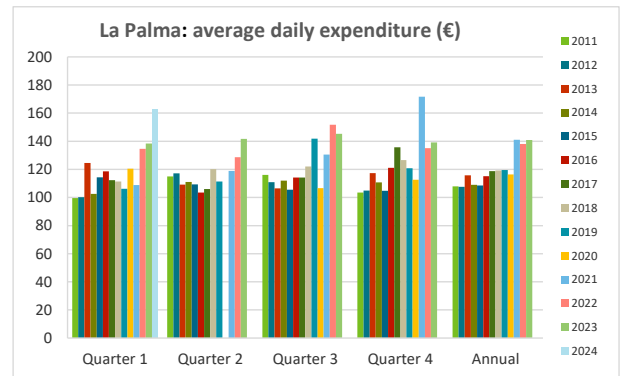
TENERIFE

	Quarter 1	Quarter 2	Quarter 3	Quarter 4	Annual
2011	117.6	115.3	116.1	119.0	117.1
2012	124.4	119.3	118.9	124.4	122.0
2013	126.5	118.1	122.1	133.6	125.6
2014	123.8	125.9	124.6	136.8	127.9
2015	130.6	132.5	136.8	136.9	134.2
2016	133.7	122.7	134.1	143.8	133.8
2017	137.9	133.2	133.6	146.4	138.0
2018	139.0	142.7	154.9	151.2	146.9
2019	122.8	139.0	145.3	145.9	138.0
2020	138.3		110.5	121.8	130.4
2021	125.7	129.3	136.8	153.5	143.5
2022	151.3	160.6	183.4	169.5	166.3
2023	167.2	160.4	180.1	168.1	168.9
2024	180.4				



LA PALMA

	Quarter 1	Quarter 2	Quarter 3	Quarter 4	Annual
2011	99.6	115.0	116.0	103.5	107.9
2012	100.2	117.1	110.9	104.9	107.5
2013	124.5	109.2	106.5	117.3	115.8
2014	102.6	111.0	112.0	110.8	109.0
2015	114.3	109.3	105.5	104.8	108.5
2016	118.6	103.4	114.1	121.0	115.2
2017	112.3	106.0	114.2	135.7	118.8
2018	111.4	120.1	122.0	126.6	119.3
2019	106.1	111.4	141.8	120.9	119.5
2020	120.4		106.6	112.7	116.4
2021	108.8	119.0	130.6	171.7	141.1
2022	134.6	128.6	151.8	135.1	138.1
2023	138.4	141.6	145.3	139.1	140.8
2024	162.4				



Linked series since 2010.

Source: ISTAC (Encuesta sobre el Gasto Turístico).

Note: Tourists under 16 years old are excluded.