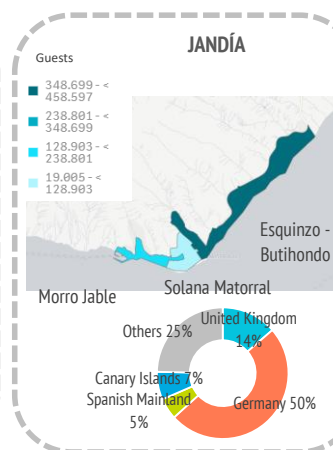
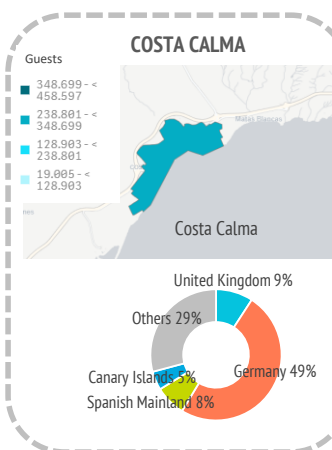
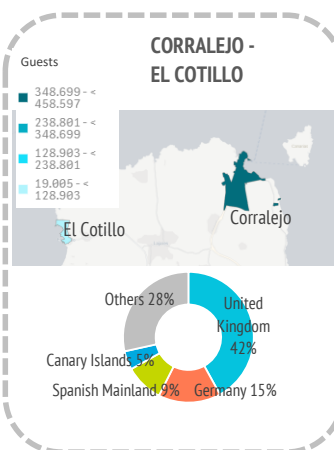
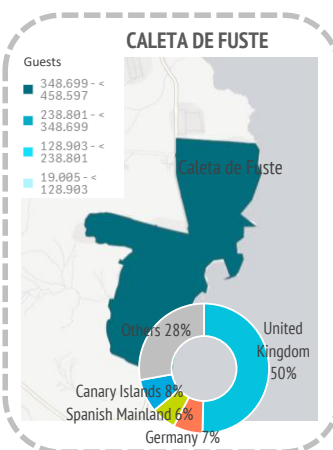


GUESTS IN ACCOMMODATION

Tourist areas	Caleta de Fuste	Corralejo-El Cotillo		Costa Calma	Jandía			Others	Fuerteventura
	Caleta de Fuste	Corralejo	El Cotillo	Costa Calma	Morro Jable	Solana Matorral	Esquinzo-Butihondo		
International	325,520	340,451	12,598	285,205	146,749	25,367	412,116	127,966	1,675,972
- United Kingdom	191,795	168,880	3,612	29,783	9,121	2,837	78,511	26,189	510,728
- Germany	27,782	60,352	3,230	160,738	99,266	15,903	214,719	33,435	615,425
- Others	105,943	111,219	5,756	94,684	38,362	6,627	118,886	68,342	549,819
Spain	54,950	51,531	6,407	39,543	29,974	3,762	46,481	24,980	257,628
- Spanish Mainland	23,518	37,444	1,517	24,597	7,252	1,986	25,436	7,033	128,783
- Canary Islands	31,432	14,087	4,890	14,946	22,722	1,776	21,045	17,947	128,845
Total	380,470	391,982	19,005	324,748	176,723	29,129	458,597	152,946	1,933,600

Tourist areas	Caleta de Fuste	Corralejo-El Cotillo		Costa Calma	Jandía			Others	Fuerteventura
	Caleta de Fuste	Corralejo	El Cotillo	Costa Calma	Morro Jable	Solana Matorral	Esquinzo-Butihondo		
International	85.6%	86.9%	66.3%	87.8%	83.0%	87.1%	89.9%	83.7%	86.7%
- United Kingdom	50.4%	43.1%	19.0%	9.2%	5.2%	9.7%	17.1%	17.1%	26.4%
- Germany	7.3%	15.4%	17.0%	49.5%	56.2%	54.6%	46.8%	21.9%	31.8%
- Others	27.8%	28.4%	30.3%	29.2%	21.7%	22.8%	25.9%	44.7%	28.4%
Spain	14.4%	13.1%	33.7%	12.2%	17.0%	12.9%	10.1%	16.3%	13.3%
- Spanish Mainland	6.2%	9.6%	8.0%	7.6%	4.1%	6.8%	5.5%	4.6%	6.7%
- Canary Islands	8.3%	3.6%	25.7%	4.6%	12.9%	6.1%	4.6%	11.7%	6.7%
Total	100%	100%	100%	100%	100%	100%	100%	100%	100%



Other indicators

Tourist areas	Caleta de Fuste	Corralejo-El Cotillo		Costa Calma	Jandía			Others	Fuerteventura
	Caleta de Fuste	Corralejo	El Cotillo	Costa Calma	Morro Jable	Solana Matorral	Esquinzo-Butihondo		
Bednights									
International	2,438,321	2,741,977	91,282	2,367,824	1,380,478	219,888	3,443,664	997,686	13,681,120
- United Kingdom	1,496,613	1,346,672	26,685	216,340	101,863	20,019	604,318	190,756	4,003,266
- Germany	187,372	547,350	27,226	1,443,884	1,027,631	152,353	1,964,690	312,537	5,663,043
- Others	754,336	847,955	37,371	707,600	250,984	47,516	874,656	494,393	4,014,811
Spain	231,550	227,290	26,295	201,446	265,932	16,459	234,434	102,812	1,306,218
- Spanish Mainland	100,276	174,585	7,460	149,094	39,414	9,160	139,761	41,098	660,848
- Canary Islands	131,274	52,705	18,835	52,352	226,518	7,299	94,673	61,714	645,370
Total	2,669,871	2,969,267	117,577	2,569,270	1,646,410	236,347	3,678,098	1,100,498	14,987,338
Length of stay									
International	7.5	8.1	7.2	8.3	9.4	8.7	8.4	7.8	8.2
- United Kingdom	7.8	8.0	7.4	7.3	11.2	7.1	7.7	7.3	7.8
- Germany	6.7	9.1	8.4	9.0	10.4	9.6	9.2	9.3	9.2
Spain	4.2	4.4	4.1	5.1	8.9	4.4	5.0	4.1	5.1
- Spanish Mainland	4.3	4.7	4.9	6.1	5.4	4.6	5.5	5.8	5.1
- Canary Islands	4.2	3.7	3.9	3.5	10.0	4.1	4.5	3.4	5.0
Accommodation establishments	24	29	6	20	20	3	16	15	134
Bed-spaces	11,048	11,419	426	10,746	6,449	1,751	13,582	4,261	59,681
ADR (€)	76.54	102.40	61.61	91.02	115.55	95.25	124.32	89.59	101.13
RevPar (€)	57.62	82.36	45.26	68.84	89.37	59.54	93.35	65.38	76.83
Total revenue (€ million)	94.27	141.72	3.43	126.09	93.39	13.62	211.95	43.79	728.26
Bed-space occupancy rate (%)	66.21	71.25	75.68	65.50	69.94	36.99	74.20	70.76	68.80
Occupancy rate per room/apt. (%)	75.27	80.42	73.47	75.63	77.35	62.50	75.09	72.98	75.98
Tourist population ⁽¹⁾	7,315	8,135	322	7,039	4,511	648	10,077	3,015	41,061
Employment	1,653	2,067	72	1,747	1,287	141	3,110	747	10,824

Source: Encuestas de Alojamiento Turístico (ISTAC).

⁽¹⁾ Equivalent tourist population is obtained by dividing the total number of bednights during the reference period by 365 days (366 in case of leap year).