

Tourist arrivals in the Canary Islands (ISTAC)

May 2024



CANARY ISLANDS

	United Kingdom	Germany	Belgium	France	Netherlands	Ireland	Italy	Switzerland	Denmark	Finland	Norway	Sweden	Nordics	Others	International	Mainland	TOTAL
2023	448,831	155,901	36,110	62,668	47,211	57,232	51,646	13,837	9,704	166	7,250	7,339	24,459	87,873	985,766	148,733	1,134,499
2024	492,212	157,874	37,021	77,218	64,592	62,292	49,547	14,133	8,199	757	9,844	7,062	25,862	107,655	1,088,406	163,865	1,252,271
Change	43,381	1,973	911	14,550	17,381	5,060	-2,099	296	-1,505	591	2,594	-277	1,403	19,782	102,640	15,132	117,772
Change, %	9.7%	1.3%	2.5%	23.2%	36.8%	8.8%	-4.1%	2.1%	-15.5%	356.0%	35.8%	-3.8%	5.7%	22.5%	10.4%	10.2%	10.4%

LANZAROTE

	United Kingdom	Germany	Belgium	France	Netherlands	Ireland	Italy	Switzerland	Denmark	Finland	Norway	Sweden	Nordics	Others	International	Mainland	TOTAL
2023	121,978	13,902	5,130	16,499	6,110	29,245	7,591	0	0	0	0	0	1,705	7,803	209,963	24,297	234,260
2024	128,655	14,413	5,202	20,084	6,253	27,884	5,404	0	0	0	0	0	1,872	8,273	218,038	22,352	240,391
Change	6,677	511	72	3,585	143	-1,361	-2,187	--	--	--	--	--	167	470	8,075	-1,945	6,131
Change, %	5.5%	3.7%	1.4%	21.7%	2.3%	-4.7%	-28.8%	--	--	--	--	--	9.8%	6.0%	3.8%	-8.0%	2.6%

FUERTEVENTURA

	United Kingdom	Germany	Belgium	France	Netherlands	Ireland	Italy	Switzerland	Denmark	Finland	Norway	Sweden	Nordics	Others	International	Mainland	TOTAL
2023	53,386	52,131	2,038	8,284	3,727	5,051	9,668	0	0	0	0	0	3,118	13,126	150,529	13,498	164,027
2024	59,058	49,992	2,113	10,238	6,364	4,644	10,613	0	0	0	0	0	2,110	16,173	161,306	16,054	177,360
Change	5,672	-2,139	75	1,954	2,637	-407	945	--	--	--	--	--	-1,008	3,047	10,777	2,556	13,333
Change, %	10.6%	-4.1%	3.7%	23.6%	70.8%	-8.1%	9.8%	--	--	--	--	--	-32.3%	23.2%	7.2%	18.9%	8.1%

GRAN CANARIA

	United Kingdom	Germany	Belgium	France	Netherlands	Ireland	Italy	Switzerland	Denmark	Finland	Norway	Sweden	Nordics	Others	International	Mainland	TOTAL
2023	73,030	45,360	9,249	12,421	20,367	8,213	9,817	0	0	0	0	0	16,801	29,707	224,966	41,465	266,431
2024	84,776	43,801	9,396	14,403	29,029	11,084	7,297	0	0	0	0	0	17,625	30,392	247,804	46,202	294,006
Change	11,746	-1,559	147	1,982	8,662	2,871	-2,520	--	--	--	--	--	824	685	22,838	4,737	27,575
Change, %	16.1%	-3.4%	1.6%	16.0%	42.5%	35.0%	-25.7%	--	--	--	--	--	4.9%	2.3%	10.2%	11.4%	10.3%

TENERIFE

	United Kingdom	Germany	Belgium	France	Netherlands	Ireland	Italy	Switzerland	Denmark	Finland	Norway	Sweden	Nordics	Others	International	Mainland	TOTAL
2023	199,653	41,554	19,183	24,985	16,402	14,723	24,351	0	0	0	0	0	2,761	49,381	392,993	66,516	459,509
2024	218,746	45,862	20,043	31,978	21,504	18,622	25,982	0	0	0	0	0	4,250	66,024	453,010	75,399	528,408
Change	19,093	4,308	860	6,993	5,102	3,899	1,631	--	--	--	--	--	1,489	16,643	60,017	8,883	68,899
Change, %	9.6%	10.4%	4.5%	28.0%	31.1%	26.5%	6.7%	--	--	--	--	--	53.9%	33.7%	15.3%	13.4%	15.0%

LA PALMA

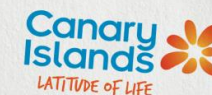
	United Kingdom	Germany	Belgium	France	Netherlands	Ireland	Italy	Switzerland	Denmark	Finland	Norway	Sweden	Nordics	Others	International	Mainland	TOTAL
2023	783	1,787	310	347	576	0	176	0	0	0	0	0	40	1,405	5,425	2,285	7,711
2024	714	2,953	234	390	1,441	58	252	0	0	0	0	0	0	879	6,921	3,200	10,121
Change	-69	1,166	-76	43	865	58	76	--	--	--	--	--	-40	-526	1,496	915	2,410
Change, %	-8.8%	65.2%	-24.5%	12.4%	150.2%	--	43.2%	--	--	--	--	--	-100.0%	-37.4%	27.6%	40.0%	31.3%

Source: Frontur (ISTAC). Tourist arrivals by air.

Note: on the result of the estimated Canary Islands total arrivals, tourists from La Gomera and El Hierro are included. Only main tourists are taken into account in each island.

Tourist arrivals in the Canary Islands (ISTAC)

January - May 2024



CANARY ISLANDS

	United Kingdom	Germany	Belgium	France	Netherlands	Ireland	Italy	Switzerland	Denmark	Finland	Norway	Sweden	Nordics	Others	International	Mainland	TOTAL
2023	2,210,745	1,113,630	179,873	362,943	254,645	283,168	264,599	78,379	162,867	108,723	187,666	199,159	658,415	568,049	5,974,441	719,715	6,694,157
2024	2,491,240	1,269,785	196,675	391,472	312,294	336,433	309,299	82,583	156,627	99,480	225,684	209,606	691,397	651,010	6,732,188	752,473	7,484,660
Change	280,495	156,155	16,802	28,529	57,649	53,265	44,700	4,204	-6,240	-9,243	38,018	10,447	32,982	82,961	757,747	32,758	790,503
Change, %	12.7%	14.0%	9.3%	7.9%	22.6%	18.8%	16.9%	5.4%	-3.8%	-8.5%	20.3%	5.2%	5.0%	14.6%	12.7%	4.6%	11.8%

LANZAROTE

	United Kingdom	Germany	Belgium	France	Netherlands	Ireland	Italy	Switzerland	Denmark	Finland	Norway	Sweden	Nordics	Others	International	Mainland	TOTAL
2023	592,835	111,678	25,016	91,682	37,061	135,765	38,930	0	0	0	0	0	34,818	46,245	1,114,025	109,967	1,223,992
2024	666,163	126,999	28,752	100,394	41,736	144,990	34,672	0	0	0	0	0	30,793	57,243	1,231,741	100,645	1,332,385
Change	73,328	15,321	3,736	8,712	4,675	9,225	-4,258	--	--	--	--	--	-4,025	10,998	117,716	-9,322	108,393
Change, %	12.4%	13.7%	14.9%	9.5%	12.6%	6.8%	-10.9%	--	--	--	--	--	-11.6%	23.8%	10.6%	-8.5%	8.9%

FUERTEVENTURA

	United Kingdom	Germany	Belgium	France	Netherlands	Ireland	Italy	Switzerland	Denmark	Finland	Norway	Sweden	Nordics	Others	International	Mainland	TOTAL
2023	282,348	293,341	10,537	57,577	25,844	23,279	46,400	0	0	0	0	0	33,023	85,824	858,171	60,473	918,643
2024	312,010	317,857	14,144	56,243	34,100	29,416	53,457	0	0	0	0	0	34,149	103,477	954,855	62,865	1,017,719
Change	29,662	24,516	3,607	-1,334	8,256	6,137	7,057	--	--	--	--	--	1,126	17,653	96,684	2,392	99,076
Change, %	10.5%	8.4%	34.2%	-2.3%	31.9%	26.4%	15.2%	--	--	--	--	--	3.4%	20.6%	11.3%	4.0%	10.8%

GRAN CANARIA

	United Kingdom	Germany	Belgium	France	Netherlands	Ireland	Italy	Switzerland	Denmark	Finland	Norway	Sweden	Nordics	Others	International	Mainland	TOTAL
2023	345,855	353,338	44,302	65,729	103,496	45,138	52,532	0	0	0	0	0	406,570	174,392	1,591,353	201,605	1,792,958
2024	402,144	397,002	47,285	68,212	127,704	54,374	59,764	0	0	0	0	0	435,688	192,308	1,784,481	221,274	2,005,756
Change	56,289	43,664	2,983	2,483	24,208	9,236	7,232	--	--	--	--	--	29,118	17,916	193,128	19,669	212,798
Change, %	16.3%	12.4%	6.7%	3.8%	23.4%	20.5%	13.8%	--	--	--	--	--	7.2%	10.3%	12.1%	9.8%	11.9%

TENERIFE

	United Kingdom	Germany	Belgium	France	Netherlands	Ireland	Italy	Switzerland	Denmark	Finland	Norway	Sweden	Nordics	Others	International	Mainland	TOTAL
2023	980,634	324,786	97,703	144,660	84,454	78,487	125,946	0	0	0	0	0	178,872	329,684	2,345,225	329,785	2,675,008
2024	1,102,463	381,125	105,123	163,828	102,974	107,437	160,429	0	0	0	0	0	185,528	372,523	2,681,425	348,742	3,030,167
Change	121,829	56,339	7,420	19,168	18,520	28,950	34,483	--	--	--	--	--	6,656	42,839	336,200	18,957	355,159
Change, %	12.4%	17.3%	7.6%	13.3%	21.9%	36.9%	27.4%	--	--	--	--	--	3.7%	13.0%	14.3%	5.7%	13.3%

LA PALMA

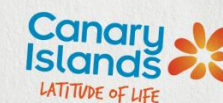
	United Kingdom	Germany	Belgium	France	Netherlands	Ireland	Italy	Switzerland	Denmark	Finland	Norway	Sweden	Nordics	Others	International	Mainland	TOTAL
2023	5,782	19,227	1,756	1,952	3,374	240	544	0	0	0	0	0	3,752	6,749	43,375	13,692	57,068
2024	6,234	36,958	740	2,208	5,502	62	815	0	0	0	0	0	3,973	6,239	62,729	15,273	78,002
Change	452	17,731	-1,016	256	2,128	-178	271	--	--	--	--	--	221	-510	19,354	1,581	20,934
Change, %	7.8%	92.2%	-57.9%	13.1%	63.1%	-74.2%	49.8%	--	--	--	--	--	5.9%	-7.6%	44.6%	11.5%	36.7%

Source: Frontur (ISTAC). Tourist arrivals by air.

Note: on the result of the estimated Canary Islands total arrivals, tourists from La Gomera and El Hierro are included. Only main tourists are taken into account in each island.

International tourist arrivals in Spain (INE)

May 2024



BY COUNTRY OF RESIDENCE

Monthly

	UK	Germany	Belgium	France	Netherlands	Ireland	Italy	Switzerland	Denmark	Finland	Norway	Sweden	Nordics	Russia	Portugal	Austria	Others	INTERNATIONAL
May-23	1,809,842	1,124,990	239,007	1,149,677	436,696	240,605	422,069	186,270	87,003	32,973	81,579	136,388	337,943	0	177,409	174,585	2,001,291	8,300,384
May-24	1,913,873	1,229,437	258,392	1,284,633	505,036	290,378	471,053	210,803	75,244	38,093	109,283	164,546	387,166	0	193,660	117,749	2,394,266	9,256,446
Change	104,031	104,447	19,385	134,956	68,340	49,773	48,984	24,533	-11,759	5,120	27,704	28,158	49,223	--	16,251	-56,836	392,975	956,062
Change, %	5.7%	9.3%	8.1%	11.7%	15.6%	20.7%	11.6%	13.2%	-13.5%	15.5%	34.0%	20.6%	14.6%	--	9.2%	-32.6%	19.6%	11.5%

Year-to-date

	UK	Germany	Belgium	France	Netherlands	Ireland	Italy	Switzerland	Denmark	Finland	Norway	Sweden	Nordics	Russia	Portugal	Austria	Others	INTERNATIONAL
Jan-May 23	5,743,122	3,852,217	896,759	3,908,887	1,439,013	823,567	1,644,542	685,760	465,371	251,380	489,959	620,967	1,827,677	0	909,751	503,432	6,996,752	29,231,479
Jan-May 24	6,352,645	4,418,003	1,078,943	4,425,960	1,627,303	978,260	1,893,098	750,804	464,101	276,816	548,322	708,114	1,997,353	--	897,846	412,661	8,379,662	33,212,538
Change	609,523	565,786	182,184	517,073	188,290	154,693	248,556	65,044	-1,270	25,436	58,363	87,147	169,676	--	-11,905	-90,771	1,382,910	3,981,059
Change, %	10.6%	14.7%	20.3%	13.2%	13.1%	18.8%	15.1%	9.5%	-0.3%	10.1%	11.9%	14.0%	9.3%	--	-1.3%	-18.0%	19.8%	13.6%

BY AUTONOMOUS COMMUNITY

Monthly

	Canary Islands	Andalusia	Aragon	Asturias	Canary Islands	Cantabria	C. y Leon	C. La Mancha	Catalonia	Canarian Region	Extremadura	Galicia	Madrid	Murcia	Navarre	Basque Country	La Rioja	SPAIN
May-23	969,285	1,210,100	43,624	34,600	1,797,943	36,773	92,042	0	1,924,278	1,001,303	0	133,344	706,226	69,173	41,432	192,492	10,759	8,300,384
May-24	1,037,701	1,348,546	53,758	17,335	1,997,977	45,758	104,328	0	2,038,608	1,152,053	17,704	179,368	878,117	103,764	56,473	196,188	0	9,256,446
Change	68,416	138,446	10,134	-17,265	200,034	8,985	12,286	0	114,330	150,750	17,704	46,024	171,891	34,591	15,041	3,696	-10,759	956,062
Change, %	7.1%	11.4%	23.2%	-49.9%	11.1%	24.4%	13.3%	--	5.9%	15.1%	--	34.5%	24.3%	50.0%	36.3%	1.9%	-100.0%	11.5%

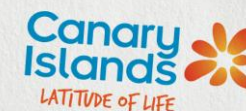
Year-to-date

	Canary Islands	Andalusia	Aragon	Asturias	Canary Islands	Cantabria	C. y Leon	C. La Mancha	Catalonia	Canarian Region	Extremadura	Galicia	Madrid	Murcia	Navarre	Basque Country	La Rioja	SPAIN
Jan-May 23	5,866,937	4,344,237	165,266	94,110	3,651,151	122,139	408,738	54,161	6,245,514	3,490,729	53,122	487,246	2,939,696	317,808	55,101	696,181	10,759	29,231,479
Jan-May 24	6,493,340	4,905,219	163,457	52,143	3,976,446	140,745	448,054	27,244	7,062,980	4,189,742	34,122	589,470	3,593,481	382,781	68,296	779,877	0	33,212,538
Change	626,403	560,982	-1,809	-41,967	325,295	18,606	39,316	-26,917	817,466	699,013	-19,000	102,224	653,785	64,973	13,195	83,696	-10,759	3,981,059
Change, %	10.7%	12.9%	-1.1%	-44.6%	8.9%	15.2%	9.6%	-49.7%	13.1%	20.0%	-35.8%	21.0%	22.2%	20.4%	23.9%	12.0%	-100.0%	13.6%

Note: Since March 2022, "Russia" is included in Others. Source: Frontur (INE).

Tourist arrivals in the Canary Islands (ISTAC)

May 2024



Number of tourists by holiday package booking and country of residence

May 2024

	Book	Do not book	TOTAL	% Book	% Do not book
International	587,864	500,542	1,088,406	54.0%	46.0%
- Germany	103,478	54,396	157,874	65.5%	34.5%
- Netherlands	45,740	18,852	64,592	70.8%	29.2%
- Ireland	24,945	37,347	62,292	40.0%	60.0%
- Nordics	13,759	12,104	25,863	53.2%	46.8%
- United Kingdom	301,598	190,614	492,212	61.3%	38.7%
- Switzerland	5,224	8,909	14,133	37.0%	63.0%
- Others	93,120	178,320	271,440	34.3%	65.7%
Spanish Mainland	42,729	121,136	163,865	26.1%	73.9%
TOTAL	630,593	621,678	1,252,271	50.4%	49.6%

January - May 2024

	Book	Do not book	TOTAL	% Book	% Do not book
International	3,506,985	3,225,205	6,732,189	52.1%	47.9%
- Germany	805,620	464,165	1,269,785	63.4%	36.6%
- Netherlands	187,732	124,563	312,294	60.1%	39.9%
- Ireland	110,417	226,016	336,433	32.8%	67.2%
- Nordics	432,803	258,596	691,400	62.6%	37.4%
- United Kingdom	1,455,118	1,036,122	2,491,240	58.4%	41.6%
- Switzerland	24,796	57,788	82,583	30.0%	70.0%
- Others	490,499	1,057,955	1,548,454	31.7%	68.3%
Spanish Mainland	138,068	614,404	752,473	18.3%	81.7%
TOTAL	3,645,053	3,839,609	7,484,662	48.7%	51.3%

Share of tourists by accommodation type and country of residence

May 2024

	Hotels and similar	Apartments	Property	Cruise	House of friend or relative	Others
International	69.3%	19.8%	2.5%	0.5%	2.9%	5.0%
- Germany	77.0%	12.2%	3.1%	0.0%	3.0%	4.7%
- Netherlands	72.1%	23.5%	0.8%	0.0%	1.5%	2.1%
- Ireland	61.5%	32.0%	1.5%	0.3%	2.1%	2.7%
- Nordics	67.3%	18.7%	5.9%	0.6%	4.3%	3.2%
- United Kingdom	67.5%	23.9%	1.9%	1.1%	2.1%	3.6%
- Switzerland	73.1%	16.3%	0.9%	0.0%	3.9%	5.8%
- Others	69.2%	13.3%	3.7%	0.0%	4.7%	9.0%
Spanish Mainland	66.3%	10.4%	1.4%	0.0%	12.1%	9.8%
TOTAL	68.9%	18.5%	2.4%	0.5%	4.1%	5.6%

January - May 2024

	Hotels and similar	Apartments	Property	Cruise	House of friend or relative	Others
International	65.1%	19.4%	2.5%	3.9%	3.6%	5.5%
- Germany	63.9%	10.5%	3.4%	13.7%	3.4%	5.1%
- Netherlands	67.4%	23.9%	1.5%	1.0%	2.3%	4.0%
- Ireland	58.8%	31.6%	1.6%	0.5%	2.8%	4.6%
- Nordics	64.4%	28.3%	2.5%	0.1%	2.5%	2.2%
- United Kingdom	66.0%	22.5%	2.0%	3.0%	2.4%	4.1%
- Switzerland	67.5%	17.9%	2.9%	0.9%	5.1%	5.6%
- Others	65.6%	14.4%	3.1%	0.3%	6.6%	10.0%
Spanish Mainland	55.5%	8.0%	1.9%	0.0%	23.1%	11.4%
TOTAL	64.1%	18.3%	2.5%	3.5%	5.6%	6.1%

Source: Frontur (ISTAC). Tourist arrivals by air.

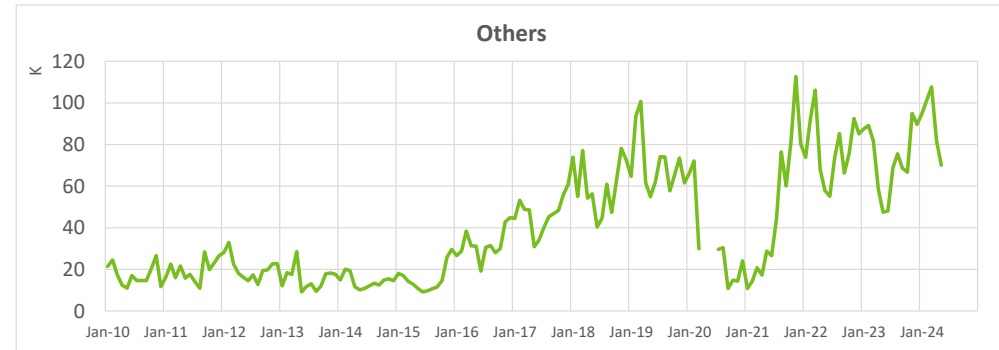
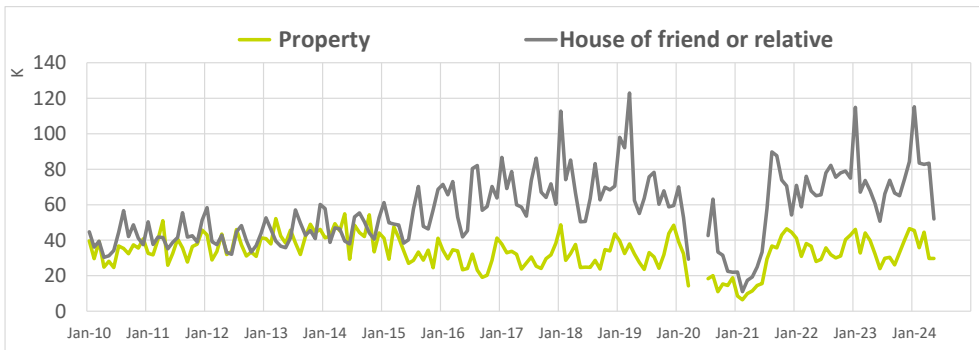
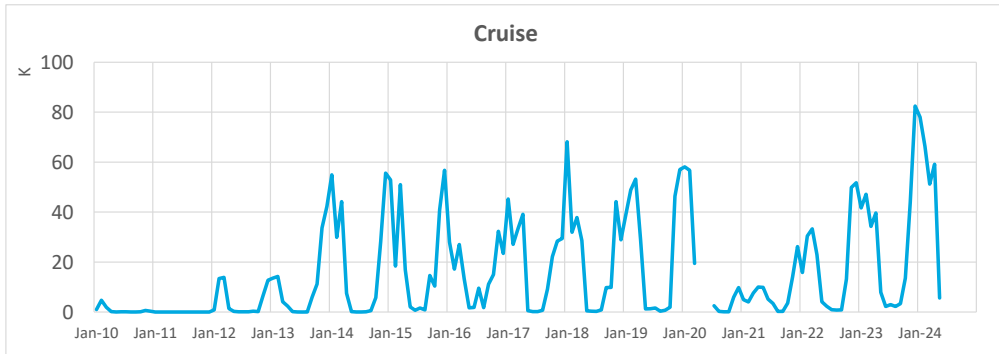
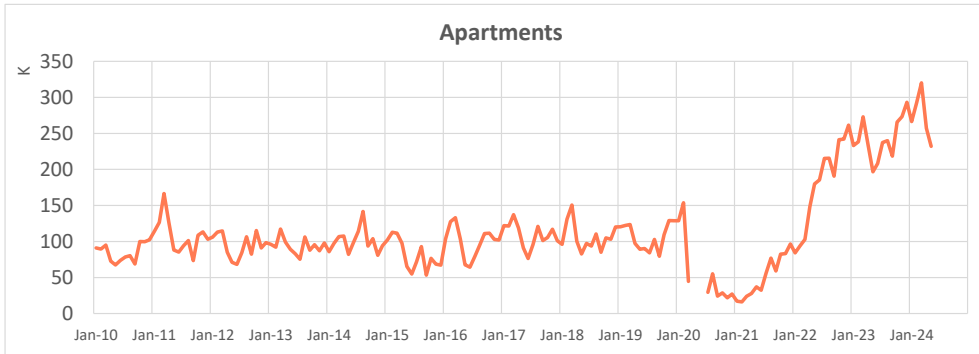
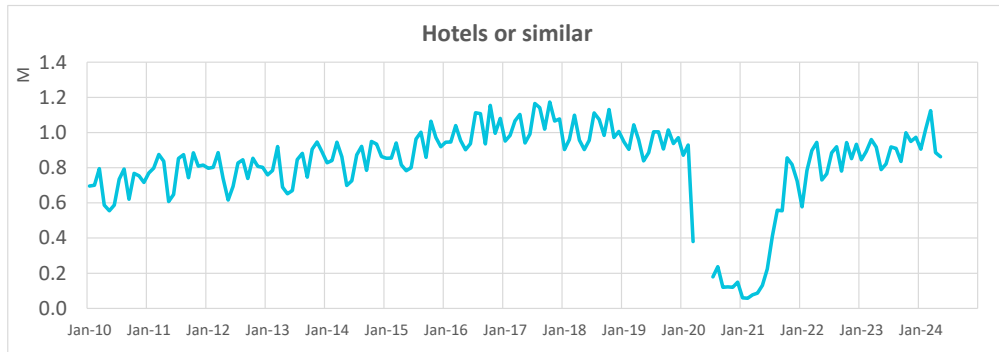
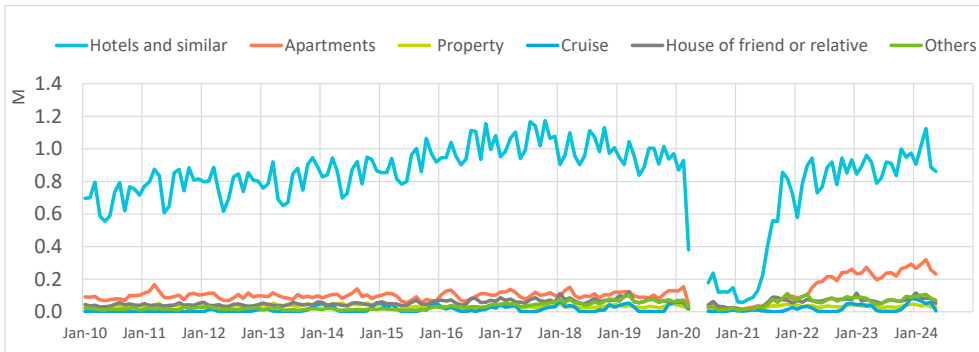
Note: on the result of the estimated Canary Islands total arrivals, tourists from La Gomera and El Hierro are included.

Tourist arrivals in the Canary Islands (ISTAC)

May 2024



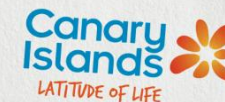
Number of tourists by type of accommodation



Source: Frontur (ISTAC). Tourist arrivals by air.

Tourist arrivals in the Canary Islands (ISTAC)

May 2024



Number of tourists by holiday package booking and island of stay

		May 2024					
		Lanzarote	Fuerteventura	Gran Canaria	Tenerife	La Palma	CANARY ISLANDS
Book	Total	148,491	106,330	146,508	236,547	4,145	630,593
	- International	140,775	103,289	140,142	211,085	3,985	587,864
	- Spanish Mainland	7,716	3,041	6,366	25,462	160	42,729
Do not book	Total	97,425	75,019	152,910	297,084	9,247	621,678
	- International	82,217	61,777	112,489	245,347	6,089	500,542
	- Spanish Mainland	15,208	13,242	40,421	51,737	3,158	121,136
TOTAL	All markets	245,917	181,349	299,419	533,631	13,391	1,252,271
	- International	222,993	165,066	252,632	456,432	10,073	1,088,406
	- Spanish Mainland	22,924	16,283	46,787	77,199	3,318	163,865
% book package	Total	60.4%	58.6%	48.9%	44.3%	31.0%	50.4%
	- International	63.1%	62.6%	55.5%	46.2%	39.6%	54.0%
	- Spanish Mainland	33.7%	18.7%	13.6%	33.0%	4.8%	26.1%

		January - May 2024					
		Lanzarote	Fuerteventura	Gran Canaria	Tenerife	La Palma	CANARY ISLANDS
Book	Total	798,832	685,305	1,060,565	1,307,284	49,118	3,645,053
	- International	774,319	670,031	1,038,107	1,231,164	47,591	3,506,985
	- Spanish Mainland	24,513	15,274	22,458	76,120	1,527	138,068
Do not book	Total	619,908	416,415	1,002,236	1,797,701	65,156	3,839,609
	- International	541,253	366,846	799,707	1,518,580	50,239	3,225,205
	- Spanish Mainland	78,655	49,569	202,529	279,121	14,917	614,404
TOTAL	All markets	1,418,738	1,101,720	2,062,800	3,104,985	114,275	7,484,662
	- International	1,315,570	1,036,876	1,837,814	2,749,744	97,830	6,732,189
	- Spanish Mainland	103,168	64,844	224,986	355,241	16,445	752,473
% book package	Total	56.3%	62.2%	51.4%	42.1%	43.0%	48.7%
	- International	58.9%	64.6%	56.5%	44.8%	48.6%	52.1%
	- Spanish Mainland	23.8%	23.6%	10.0%	21.4%	9.3%	18.3%

Share of tourists by accommodation type and island of stay

		May 2024					
		Lanzarote	Fuerteventura	Gran Canaria	Tenerife	La Palma	CANARY ISLANDS
International	Hotels	62.8%	78.9%	71.8%	66.4%	30.0%	69.3%
	Apartments	27.0%	10.5%	20.4%	18.8%	19.7%	19.8%
	Property	1.8%	1.8%	1.5%	3.7%	3.7%	2.5%
	Cruise	1.5%	1.6%	1.8%	0.7%	21.0%	0.5%
	House of friend or relative	2.0%	3.2%	2.9%	3.3%	8.7%	2.9%
	Others	5.0%	4.0%	1.6%	7.1%	16.9%	5.0%
	Spanish Mainland	Hotels	64.2%	66.3%	66.9%	67.9%	55.3%
Apartments		11.6%	11.5%	9.0%	10.6%	7.5%	10.4%
Property		0.2%	2.1%	1.6%	1.4%	1.5%	1.4%
Cruise		0.0%	0.0%	0.0%	0.0%	0.0%	0.0%
House of friend or relative		10.5%	14.4%	18.7%	8.0%	12.7%	12.1%
Others		13.6%	5.6%	3.9%	12.0%	23.0%	9.8%
TOTAL		Hotels	62.9%	77.8%	71.0%	66.7%	36.2%
	Apartments	25.6%	10.6%	18.6%	17.6%	16.7%	18.5%
	Property	1.6%	1.8%	1.5%	3.3%	3.1%	2.4%
	Cruise	1.4%	1.5%	1.5%	0.6%	15.8%	0.5%
	House of friend or relative	2.8%	4.2%	5.3%	3.9%	9.7%	4.1%
	Others	5.8%	4.1%	2.0%	7.8%	18.4%	5.6%

		January - May 2024					
		Lanzarote	Fuerteventura	Gran Canaria	Tenerife	La Palma	CANARY ISLANDS
International	Hotels	61.2%	74.3%	61.6%	60.8%	30.8%	65.1%
	Apartments	25.6%	10.0%	20.1%	18.3%	15.6%	19.4%
	Property	1.7%	2.0%	2.3%	3.1%	2.4%	2.5%
	Cruise	5.4%	6.8%	9.1%	6.1%	27.9%	3.9%
	House of friend or relative	1.7%	3.1%	4.4%	3.9%	5.9%	3.6%
	Others	4.4%	3.8%	2.5%	7.9%	17.3%	5.5%
	Spanish Mainland	Hotels	62.2%	64.4%	51.2%	56.2%	41.9%
Apartments		10.7%	9.0%	7.1%	7.8%	4.9%	8.0%
Property		1.0%	2.1%	2.3%	1.6%	4.1%	1.9%
Cruise		0.0%	0.0%	0.1%	0.0%	0.3%	0.0%
House of friend or relative		14.5%	17.1%	33.5%	19.9%	20.9%	23.1%
Others		11.5%	7.3%	5.8%	14.5%	28.0%	11.4%
TOTAL		Hotels	61.3%	73.7%	60.5%	60.3%	32.4%
	Apartments	24.5%	10.0%	18.6%	17.1%	14.1%	18.3%
	Property	1.6%	2.0%	2.3%	2.9%	2.7%	2.5%
	Cruise	5.0%	6.4%	8.1%	5.4%	24.0%	3.5%
	House of friend or relative	2.6%	3.9%	7.6%	5.7%	8.1%	5.6%
	Others	5.0%	4.0%	2.9%	8.7%	18.8%	6.1%

Source: Frontur (ISTAC). Tourist arrivals by air.

Note: in the islands are included tourists who have chosen the island as the main destination of their trip or as a secondary destination.