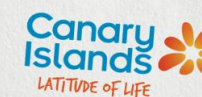


Tourist arrivals in the Canary Islands (ISTAC)

June 2024



CANARY ISLANDS

	United Kingdom	Germany	Belgium	France	Netherlands	Ireland	Italy	Switzerland	Denmark	Finland	Norway	Sweden	Nordics	Others	International	Mainland	TOTAL
2023	462,445	154,056	27,964	52,436	42,560	61,135	46,054	10,587	8,926	457	9,157	6,239	24,779	96,618	978,635	176,289	1,154,924
2024	507,202	153,461	31,401	63,169	54,092	65,908	58,589	9,157	7,270	341	11,961	7,390	26,962	110,621	1,080,561	176,667	1,257,228
Change	44,757	-595	3,437	10,733	11,532	4,773	12,535	-1,430	-1,656	-116	2,804	1,151	2,183	14,003	101,926	378	102,304
Change, %	9.7%	-0.4%	12.3%	20.5%	27.1%	7.8%	27.2%	-13.5%	-18.6%	-25.4%	30.6%	18.4%	8.8%	14.5%	10.4%	0.2%	8.9%

LANZAROTE

	United Kingdom	Germany	Belgium	France	Netherlands	Ireland	Italy	Switzerland	Denmark	Finland	Norway	Sweden	Nordics	Others	International	Mainland	TOTAL
2023	125,302	14,935	4,034	14,534	4,299	31,065	6,904	-	-	-	-	-	2,069	6,075	209,218	28,985	238,202
2024	135,659	13,251	4,348	15,874	5,911	31,350	5,359	-	-	-	-	-	1,565	8,050	221,367	25,078	246,445
Change	10,357	-1,684	314	1,340	1,612	285	-1,545	--	--	--	--	--	-504	1,975	12,149	-3,907	8,243
Change, %	8.3%	-11.3%	7.8%	9.2%	37.5%	0.9%	-22.4%	--	--	--	--	--	-24.4%	32.5%	5.8%	-13.5%	3.5%

FUERTEVENTURA

	United Kingdom	Germany	Belgium	France	Netherlands	Ireland	Italy	Switzerland	Denmark	Finland	Norway	Sweden	Nordics	Others	International	Mainland	TOTAL
2023	53,388	52,155	1,506	7,622	3,905	5,607	9,334	-	-	-	-	-	2,280	20,419	156,216	15,385	171,601
2024	60,405	53,303	916	9,270	5,058	5,459	12,311	-	-	-	-	-	2,410	19,335	168,467	19,050	187,517
Change	7,017	1,148	-590	1,648	1,153	-148	2,977	--	--	--	--	--	130	-1,084	12,251	3,665	15,916
Change, %	13.1%	2.2%	-39.2%	21.6%	29.5%	-2.6%	31.9%	--	--	--	--	--	5.7%	-5.3%	7.8%	23.8%	9.3%

GRAN CANARIA

	United Kingdom	Germany	Belgium	France	Netherlands	Ireland	Italy	Switzerland	Denmark	Finland	Norway	Sweden	Nordics	Others	International	Mainland	TOTAL
2023	80,310	43,773	6,809	9,980	17,200	8,374	8,402	-	-	-	-	-	16,852	29,526	221,227	45,313	266,540
2024	87,700	43,366	8,648	12,553	21,649	9,382	8,381	-	-	-	-	-	19,084	30,556	241,320	49,322	290,642
Change	7,390	-407	1,839	2,573	4,449	1,008	-21	--	--	--	--	--	2,232	1,030	20,093	4,009	24,102
Change, %	9.2%	-0.9%	27.0%	25.8%	25.9%	12.0%	-0.2%	--	--	--	--	--	13.2%	3.5%	9.1%	8.8%	9.0%

TENERIFE

	United Kingdom	Germany	Belgium	France	Netherlands	Ireland	Italy	Switzerland	Denmark	Finland	Norway	Sweden	Nordics	Others	International	Mainland	TOTAL
2023	202,556	41,458	15,245	20,120	16,655	16,089	21,415	-	-	-	-	-	3,316	50,141	386,995	80,968	467,963
2024	222,430	40,704	16,789	25,249	20,477	19,716	32,281	-	-	-	-	-	3,814	61,099	442,558	79,903	522,461
Change	19,874	-754	1,544	5,129	3,822	3,627	10,866	--	--	--	--	--	498	10,958	55,563	-1,065	54,498
Change, %	9.8%	-1.8%	10.1%	25.5%	22.9%	22.5%	50.7%	--	--	--	--	--	15.0%	21.9%	14.4%	-1.3%	11.6%

LA PALMA

	United Kingdom	Germany	Belgium	France	Netherlands	Ireland	Italy	Switzerland	Denmark	Finland	Norway	Sweden	Nordics	Others	International	Mainland	TOTAL
2023	795	957	320	92	501	0	0	-	-	-	-	-	83	937	3,685	4,786	8,471
2024	823	2,433	649	224	996	0	206	-	-	-	-	-	9	505	5,846	3,050	8,896
Change	28	1,476	329	132	495	0	206	--	--	--	--	--	-74	-432	2,161	-1,736	425
Change, %	3.5%	154.2%	102.8%	143.5%	98.8%	--	--	--	--	--	--	--	-89.2%	-46.1%	58.6%	-36.3%	5.0%

Source: Frontur (ISTAC). Tourist arrivals by air.

Note: on the result of the estimated Canary Islands total arrivals, tourists from La Gomera and El Hierro are included. Only main tourists are taken into account in each island.

Tourist arrivals in the Canary Islands (ISTAC)

January - June 2024



CANARY ISLANDS

	United Kingdom	Germany	Belgium	France	Netherlands	Ireland	Italy	Switzerland	Denmark	Finland	Norway	Sweden	Nordics	Others	International	Mainland	TOTAL
2023	2,673,190	1,267,686	207,837	415,379	297,205	344,303	310,653	88,966	171,793	109,180	196,823	205,398	683,194	664,667	6,953,076	896,004	7,849,081
2024	2,998,442	1,423,246	228,076	454,641	366,386	402,341	367,888	91,740	163,897	99,821	237,645	216,996	718,359	761,631	7,812,749	929,140	8,741,888
Change	325,252	155,560	20,239	39,262	69,181	58,038	57,235	2,774	-7,896	-9,359	40,822	11,598	35,165	96,964	859,673	33,136	892,807
Change, %	12.2%	12.3%	9.7%	9.5%	23.3%	16.9%	18.4%	3.1%	-4.6%	-8.6%	20.7%	5.6%	5.1%	14.6%	12.4%	3.7%	11.4%

LANZAROTE

	United Kingdom	Germany	Belgium	France	Netherlands	Ireland	Italy	Switzerland	Denmark	Finland	Norway	Sweden	Nordics	Others	International	Mainland	TOTAL
2023	718,137	126,613	29,050	106,216	41,360	166,830	45,834	-	-	-	-	-	36,887	52,320	1,323,243	138,952	1,462,194
2024	801,822	140,250	33,100	116,268	47,647	176,340	40,031	-	-	-	-	-	32,358	65,293	1,453,108	125,723	1,578,830
Change	83,685	13,637	4,050	10,052	6,287	9,510	-5,803	--	--	--	--	--	-4,529	12,973	129,865	-13,229	116,636
Change, %	11.7%	10.8%	13.9%	9.5%	15.2%	5.7%	-12.7%	--	--	--	--	--	-12.3%	24.8%	9.8%	-9.5%	8.0%

FUERTEVENTURA

	United Kingdom	Germany	Belgium	France	Netherlands	Ireland	Italy	Switzerland	Denmark	Finland	Norway	Sweden	Nordics	Others	International	Mainland	TOTAL
2023	335,736	345,496	12,043	65,199	29,749	28,886	55,734	-	-	-	-	-	35,303	106,243	1,014,387	75,858	1,090,244
2024	372,415	371,160	15,060	65,513	39,158	34,875	65,768	-	-	-	-	-	36,559	122,812	1,123,322	81,915	1,205,236
Change	36,679	25,664	3,017	314	9,409	5,989	10,034	--	--	--	--	--	1,256	16,569	108,935	6,057	114,992
Change, %	10.9%	7.4%	25.1%	0.5%	31.6%	20.7%	18.0%	--	--	--	--	--	3.6%	15.6%	10.7%	8.0%	10.5%

GRAN CANARIA

	United Kingdom	Germany	Belgium	France	Netherlands	Ireland	Italy	Switzerland	Denmark	Finland	Norway	Sweden	Nordics	Others	International	Mainland	TOTAL
2023	426,165	397,111	51,111	75,709	120,696	53,512	60,934	-	-	-	-	-	423,422	203,918	1,812,580	246,918	2,059,498
2024	489,844	440,368	55,933	80,765	149,353	63,756	68,145	-	-	-	-	-	454,772	222,864	2,025,801	270,596	2,296,398
Change	63,679	43,257	4,822	5,056	28,657	10,244	7,211	--	--	--	--	--	31,350	18,946	213,221	23,678	236,900
Change, %	14.9%	10.9%	9.4%	6.7%	23.7%	19.1%	11.8%	--	--	--	--	--	7.4%	9.3%	11.8%	9.6%	11.5%

TENERIFE

	United Kingdom	Germany	Belgium	France	Netherlands	Ireland	Italy	Switzerland	Denmark	Finland	Norway	Sweden	Nordics	Others	International	Mainland	TOTAL
2023	1,183,190	366,244	112,948	164,780	101,109	94,576	147,361	-	-	-	-	-	182,188	379,825	2,732,220	410,753	3,142,971
2024	1,324,893	421,829	121,912	189,077	123,451	127,153	192,710	-	-	-	-	-	189,342	433,622	3,123,983	428,645	3,552,628
Change	141,703	55,585	8,964	24,297	22,342	32,577	45,349	--	--	--	--	--	7,154	53,797	391,763	17,892	409,657
Change, %	12.0%	15.2%	7.9%	14.7%	22.1%	34.4%	30.8%	--	--	--	--	--	3.9%	14.2%	14.3%	4.4%	13.0%

LA PALMA

	United Kingdom	Germany	Belgium	France	Netherlands	Ireland	Italy	Switzerland	Denmark	Finland	Norway	Sweden	Nordics	Others	International	Mainland	TOTAL
2023	6,577	20,184	2,076	2,044	3,875	240	544	-	-	-	-	-	3,835	7,686	47,060	18,478	65,539
2024	7,057	39,391	1,389	2,432	6,498	62	1,021	-	-	-	-	-	3,982	6,744	68,575	18,323	86,898
Change	480	19,207	-687	388	2,623	-178	477	--	--	--	--	--	147	-942	21,515	-155	21,359
Change, %	7.3%	95.2%	-33.1%	19.0%	67.7%	-74.2%	87.7%	--	--	--	--	--	3.8%	-12.3%	45.7%	-0.8%	32.6%

Source: Frontur (ISTAC). Tourist arrivals by air.

Note: on the result of the estimated Canary Islands total arrivals, tourists from La Gomera and El Hierro are included. Only main tourists are taken into account in each island.

International tourist arrivals in Spain (INE)

June 2024



BY COUNTRY OF RESIDENCE

Monthly

	UK	Germany	Belgium	France	Netherlands	Ireland	Italy	Switzerland	Denmark	Finland	Norway	Sweden	Nordics	Russia	Portugal	Austria	Others	INTERNATIONAL
Jun-23	1,967,965	1,155,935	202,407	909,059	388,378	284,136	428,485	182,361	80,917	40,887	124,373	148,312	394,489	0	244,203	134,751	2,015,291	8,307,460
Jun-24	2,140,536	1,135,532	267,766	1,015,667	476,432	329,619	513,483	211,768	86,499	42,205	135,075	175,304	439,083	0	292,641	83,578	2,407,345	9,313,450
Change	172,571	-20,403	65,359	106,608	88,054	45,483	84,998	29,407	5,582	1,318	10,702	26,992	44,594	--	48,438	-51,173	392,054	1,005,990
Change, %	8.8%	-1.8%	32.3%	11.7%	22.7%	16.0%	19.8%	16.1%	6.9%	3.2%	8.6%	18.2%	11.3%	--	19.8%	-38.0%	19.5%	12.1%

Year-to-date

	UK	Germany	Belgium	France	Netherlands	Ireland	Italy	Switzerland	Denmark	Finland	Norway	Sweden	Nordics	Russia	Portugal	Austria	Others	INTERNATIONAL
Jan-Jun 23	7,711,087	5,008,152	1,099,166	4,817,946	1,827,391	1,107,703	2,073,027	868,121	546,288	292,267	614,332	769,279	2,222,166	0	1,153,954	638,183	9,012,043	37,538,939
Jan-Jun 24	8,493,181	5,553,535	1,346,709	5,441,627	2,103,735	1,307,879	2,406,581	962,572	550,600	319,021	683,397	883,418	2,436,436	--	1,190,487	496,239	10,787,007	42,525,988
Change	782,094	545,383	247,543	623,681	276,344	200,176	333,554	94,451	4,312	26,754	69,065	114,139	214,270	--	36,533	-141,944	1,774,964	4,987,049
Change, %	10.1%	10.9%	22.5%	12.9%	15.1%	18.1%	16.1%	10.9%	0.8%	9.2%	11.2%	14.8%	9.6%	--	3.2%	-22.2%	19.7%	13.3%

BY AUTONOMOUS COMMUNITY

Monthly

	Canary Islands	Andalusia	Aragon	Asturias	Canary Islands	Cantabria	C. y Leon	C. La Mancha	Catalonia	Canarian Region	Extremadura	Galicia	Madrid	Murcia	Navarre	Basque Country	La Rioja	SPAIN
Jun-23	947,828	1,156,269	35,594	39,591	2,059,265	42,514	79,480	0	1,819,708	937,202	0	128,255	745,111	90,959	22,837	165,716	0	8,307,460
Jun-24	1,045,520	1,366,423	43,067	27,389	2,196,390	46,833	103,669	15,739	2,003,863	1,120,102	0	158,761	844,277	92,858	37,211	184,756	0	9,313,450
Change	97,692	210,154	7,473	-12,202	137,125	4,319	24,189	15,739	184,155	182,900	0	30,506	99,166	1,899	14,374	19,040	0	1,005,990
Change, %	10.3%	18.2%	21.0%	-30.8%	6.7%	10.2%	30.4%	--	10.1%	19.5%	--	23.8%	13.3%	2.1%	62.9%	11.5%	--	12.1%

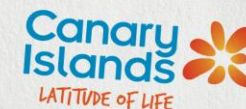
Year-to-date

	Canary Islands	Andalusia	Aragon	Asturias	Canary Islands	Cantabria	C. y Leon	C. La Mancha	Catalonia	Canarian Region	Extremadura	Galicia	Madrid	Murcia	Navarre	Basque Country	La Rioja	SPAIN
Jan-Jun 23	6,814,765	5,500,506	200,860	133,701	5,710,416	164,653	488,218	54,161	8,065,222	4,427,931	53,122	615,501	3,684,807	408,767	77,938	861,897	10,759	37,538,939
Jan-Jun 24	7,538,860	6,271,642	206,524	79,532	6,172,836	187,578	551,723	42,983	9,066,843	5,309,844	34,122	748,231	4,437,758	475,639	105,507	964,633	0	42,525,988
Change	724,095	771,136	5,664	-54,169	462,420	22,925	63,505	-11,178	1,001,621	881,913	-19,000	132,730	752,951	66,872	27,569	102,736	-10,759	4,987,049
Change, %	10.6%	14.0%	2.8%	-40.5%	8.1%	13.9%	13.0%	-20.6%	12.4%	19.9%	-35.8%	21.6%	20.4%	16.4%	35.4%	11.9%	-100.0%	13.3%

Note: Since March 2022, "Russia" is included in Others. Source: Frontur (INE).

Tourist arrivals in the Canary Islands (ISTAC)

June 2024



Number of tourists by holiday package booking and country of residence

June 2024

	Book	Do not book	TOTAL	% Book	% Do not book
International	619,308	461,253	1,080,562	57.3%	42.7%
- Germany	101,280	52,181	153,461	66.0%	34.0%
- Netherlands	41,815	12,277	54,092	77.3%	22.7%
- Ireland	32,590	33,318	65,908	49.4%	50.6%
- Nordics	15,808	11,154	26,962	58.6%	41.4%
- United Kingdom	314,513	192,689	507,202	62.0%	38.0%
- Switzerland	4,937	4,220	9,157	53.9%	46.1%
- Others	108,365	155,414	263,780	41.1%	58.9%
Spanish Mainland	53,870	122,797	176,667	30.5%	69.5%
TOTAL	673,178	584,050	1,257,229	53.5%	46.5%

January - June 2024

	Book	Do not book	TOTAL	% Book	% Do not book
International	4,126,293	3,686,458	7,812,751	52.8%	47.2%
- Germany	906,900	516,346	1,423,246	63.7%	36.3%
- Netherlands	229,547	136,840	366,386	62.7%	37.3%
- Ireland	143,007	259,334	402,341	35.5%	64.5%
- Nordics	448,611	269,750	718,362	62.4%	37.6%
- United Kingdom	1,769,631	1,228,811	2,998,442	59.0%	41.0%
- Switzerland	29,733	62,008	91,740	32.4%	67.6%
- Others	598,864	1,213,369	1,812,234	33.0%	67.0%
Spanish Mainland	191,938	737,201	929,140	20.7%	79.3%
TOTAL	4,318,231	4,423,659	8,741,891	49.4%	50.6%

Share of tourists by accommodation type and country of residence

June 2024

	Hotels and similar	Apartments	Property	Cruise	House of friend or relative	Others
International	69.0%	19.8%	2.7%	0.6%	3.1%	4.7%
- Germany	77.2%	10.8%	3.7%	0.0%	3.1%	5.1%
- Netherlands	68.9%	24.6%	1.4%	0.0%	2.1%	2.9%
- Ireland	57.0%	36.0%	1.0%	0.2%	1.6%	4.2%
- Nordics	65.7%	24.1%	4.6%	0.0%	2.6%	3.1%
- United Kingdom	67.8%	24.1%	2.3%	1.2%	1.5%	3.1%
- Switzerland	79.0%	10.9%	2.5%	0.0%	3.5%	4.1%
- Others	69.6%	11.6%	3.5%	0.0%	7.0%	8.3%
Spanish Mainland	65.8%	12.6%	1.4%	0.0%	11.7%	8.5%
TOTAL	68.6%	18.8%	2.5%	0.5%	4.3%	5.2%

January - June 2024

	Hotels and similar	Apartments	Property	Cruise	House of friend or relative	Others
International	65.6%	19.5%	2.6%	3.4%	3.5%	5.4%
- Germany	65.3%	10.5%	3.4%	12.2%	3.4%	5.1%
- Netherlands	67.6%	24.0%	1.5%	0.8%	2.2%	3.8%
- Ireland	58.5%	32.3%	1.5%	0.4%	2.6%	4.6%
- Nordics	64.5%	28.1%	2.6%	0.1%	2.5%	2.2%
- United Kingdom	66.3%	22.8%	2.0%	2.7%	2.2%	3.9%
- Switzerland	68.6%	17.2%	2.8%	0.8%	5.0%	5.5%
- Others	66.2%	14.0%	3.2%	0.3%	6.6%	9.7%
Spanish Mainland	57.5%	8.9%	1.8%	0.0%	20.9%	10.9%
TOTAL	64.8%	18.4%	2.5%	3.1%	5.4%	6.0%

Source: Frontur (ISTAC). Tourist arrivals by air.

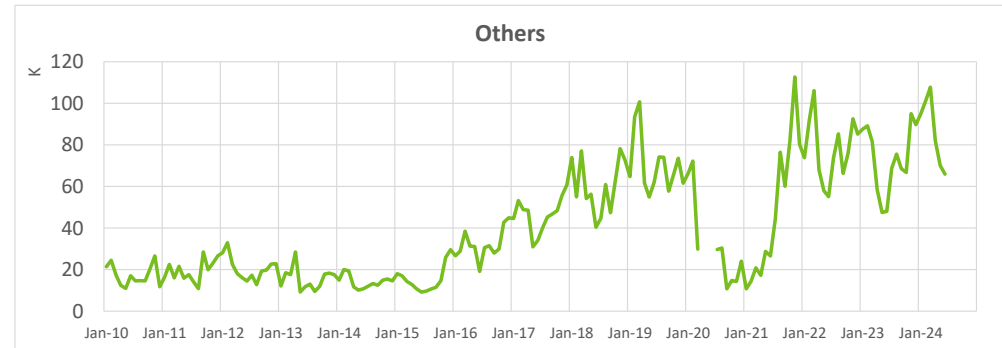
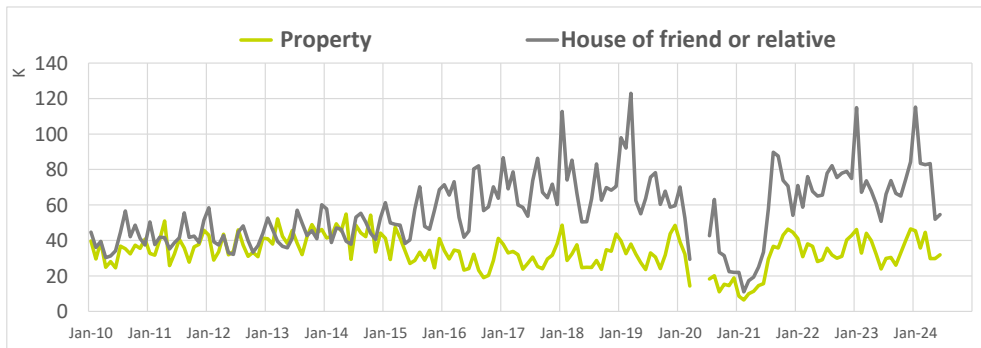
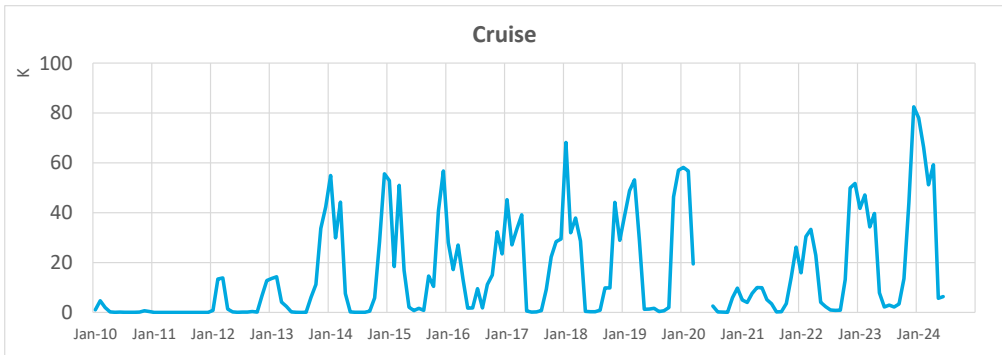
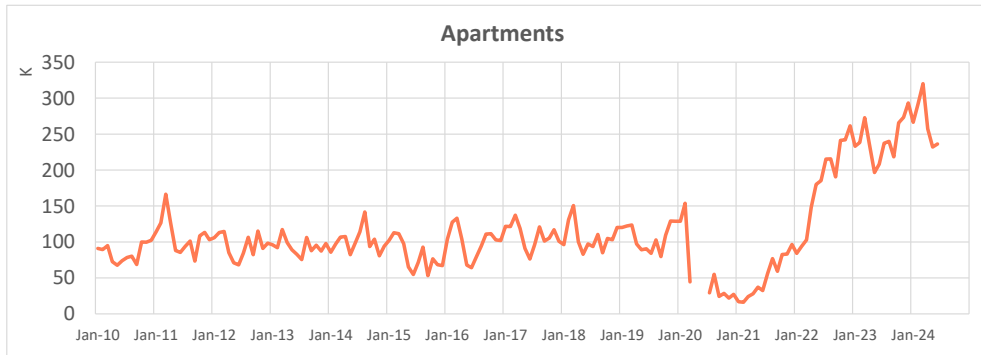
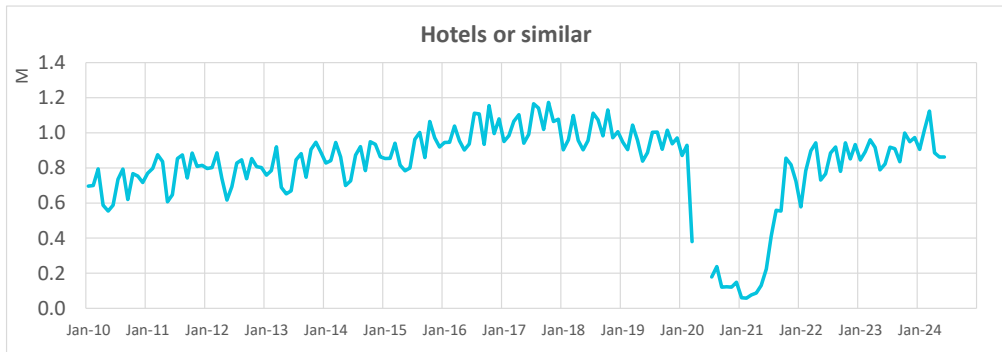
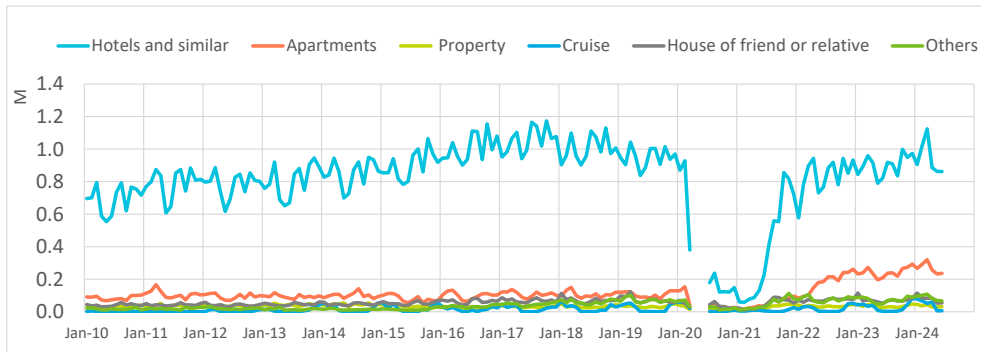
Note: on the result of the estimated Canary Islands total arrivals, tourists from La Gomera and El Hierro are included.

Tourist arrivals in the Canary Islands (ISTAC)

June 2024



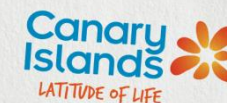
Number of tourists by type of accommodation



Source: Frontur (ISTAC). Tourist arrivals by air.

Tourist arrivals in the Canary Islands (ISTAC)

June 2024



Number of tourists by holiday package booking and island of stay

		June 2024					
		Lanzarote	Fuerteventura	Gran Canaria	Tenerife	La Palma	CANARY ISLANDS
Book	Total	165,253	123,566	170,617	223,007	6,334	673,178
	- International	156,558	119,010	157,096	196,153	5,802	619,308
	- Spanish Mainland	8,695	4,556	13,521	26,854	532	53,870
Do not book	Total	86,314	69,335	126,610	303,287	7,224	584,050
	- International	69,357	54,805	90,457	248,943	4,639	461,253
	- Spanish Mainland	16,957	14,530	36,153	54,344	2,585	122,797
TOTAL	All markets	251,568	192,901	297,226	526,294	13,558	1,257,229
	- International	225,916	173,815	247,552	445,096	10,441	1,080,562
	- Spanish Mainland	25,652	19,086	49,674	81,198	3,117	176,667
% book package	Total	65.7%	64.1%	57.4%	42.4%	46.7%	53.5%
	- International	69.3%	68.5%	63.5%	44.1%	55.6%	57.3%
	- Spanish Mainland	33.9%	23.9%	27.2%	33.1%	17.1%	30.5%

		January - June 2024					
		Lanzarote	Fuerteventura	Gran Canaria	Tenerife	La Palma	CANARY ISLANDS
Book	Total	964,085	808,871	1,231,182	1,530,291	55,452	4,318,231
	- International	930,877	789,041	1,195,203	1,427,317	53,393	4,126,293
	- Spanish Mainland	33,208	19,830	35,979	102,974	2,059	191,938
Do not book	Total	706,222	485,750	1,128,846	2,100,988	72,380	4,423,659
	- International	610,610	421,651	890,164	1,767,523	54,878	3,686,458
	- Spanish Mainland	95,612	64,099	238,682	333,465	17,502	737,201
TOTAL	All markets	1,670,306	1,294,621	2,360,026	3,631,279	127,833	8,741,891
	- International	1,541,486	1,210,691	2,085,366	3,194,840	108,271	7,812,751
	- Spanish Mainland	128,820	83,930	274,660	436,439	19,562	929,140
% book package	Total	57.7%	62.5%	52.2%	42.1%	43.4%	49.4%
	- International	60.4%	65.2%	57.3%	44.7%	49.3%	52.8%
	- Spanish Mainland	25.8%	23.6%	13.1%	23.6%	10.5%	20.7%

Share of tourists by accommodation type and island of stay

		June 2024					
		Lanzarote	Fuerteventura	Gran Canaria	Tenerife	La Palma	CANARY ISLANDS
International	Hotels	63.8%	76.9%	72.5%	64.8%	27.0%	69.0%
	Apartments	27.3%	11.2%	20.2%	18.7%	20.0%	19.8%
	Property	1.2%	3.0%	1.6%	3.9%	1.0%	2.7%
	Cruise	1.5%	2.4%	1.6%	1.4%	34.6%	0.6%
	House of friend or relative	1.7%	3.6%	3.3%	3.7%	4.5%	3.1%
	Others	4.5%	2.9%	0.9%	7.4%	13.0%	4.7%
	Spanish Mainland	Hotels	68.2%	63.5%	63.4%	67.2%	54.2%
Apartments		16.1%	13.9%	11.9%	12.6%	4.7%	12.6%
Property		0.5%	3.6%	1.7%	1.0%	0.4%	1.4%
Cruise		0.0%	0.0%	0.0%	0.0%	0.0%	0.0%
House of friend or relative		10.3%	12.9%	19.7%	6.5%	20.7%	11.7%
Others		5.0%	6.1%	3.3%	12.6%	20.0%	8.5%
TOTAL		Hotels	64.2%	75.6%	71.0%	65.2%	33.3%
	Apartments	26.1%	11.4%	18.8%	17.8%	16.5%	18.8%
	Property	1.2%	3.1%	1.6%	3.5%	0.8%	2.5%
	Cruise	1.4%	2.1%	1.3%	1.2%	26.6%	0.5%
	House of friend or relative	2.6%	4.5%	6.0%	4.1%	8.2%	4.3%
	Others	4.6%	3.2%	1.3%	8.2%	14.6%	5.2%

		January - June 2024					
		Lanzarote	Fuerteventura	Gran Canaria	Tenerife	La Palma	CANARY ISLANDS
International	Hotels	61.6%	74.7%	62.9%	61.4%	30.4%	65.6%
	Apartments	25.8%	10.2%	20.1%	18.3%	16.1%	19.5%
	Property	1.6%	2.1%	2.2%	3.2%	2.3%	2.6%
	Cruise	4.8%	6.2%	8.2%	5.4%	28.6%	3.4%
	House of friend or relative	1.7%	3.1%	4.3%	3.8%	5.8%	3.5%
	Others	4.5%	3.7%	2.3%	7.9%	16.9%	5.4%
	Spanish Mainland	Hotels	63.4%	64.2%	53.4%	58.2%	43.8%
Apartments		11.8%	10.1%	8.0%	8.7%	4.9%	8.9%
Property		0.9%	2.5%	2.2%	1.5%	3.5%	1.8%
Cruise		0.0%	0.0%	0.1%	0.0%	0.2%	0.0%
House of friend or relative		13.7%	16.2%	31.0%	17.4%	20.8%	20.9%
Others		10.2%	7.0%	5.4%	14.2%	26.8%	10.9%
TOTAL		Hotels	61.8%	74.0%	61.8%	61.0%	32.5%
	Apartments	24.7%	10.2%	18.7%	17.2%	14.4%	18.4%
	Property	1.5%	2.2%	2.2%	3.0%	2.5%	2.5%
	Cruise	4.4%	5.8%	7.3%	4.8%	24.2%	3.1%
	House of friend or relative	2.6%	4.0%	7.4%	5.5%	8.1%	5.4%
	Others	4.9%	3.9%	2.7%	8.6%	18.4%	6.0%

Source: Frontur (ISTAC). Tourist arrivals by air.

Note: in the islands are included tourists who have chosen the island as the main destination of their trip or as a secondary destination.