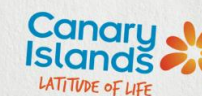


Tourist arrivals in the Canary Islands (ISTAC)

July 2024



CANARY ISLANDS

	United Kingdom	Germany	Belgium	France	Netherlands	Ireland	Italy	Switzerland	Denmark	Finland	Norway	Sweden	Nordics	Others	International	Mainland	TOTAL
2023	491,756	158,902	42,228	74,105	53,302	69,791	47,735	15,168	12,693	563	21,870	9,335	44,461	115,254	1,112,701	210,832	1,323,533
2024	533,353	162,672	51,175	76,216	57,908	70,884	57,571	16,438	13,164	1,231	20,397	10,242	45,034	131,745	1,202,995	194,344	1,397,339
Change	41,597	3,770	8,947	2,111	4,606	1,093	9,836	1,270	471	668	-1,473	907	573	16,491	90,294	-16,488	73,806
Change, %	8.5%	2.4%	21.2%	2.8%	8.6%	1.6%	20.6%	8.4%	3.7%	118.7%	-6.7%	9.7%	1.3%	14.3%	8.1%	-7.8%	5.6%

LANZAROTE

	United Kingdom	Germany	Belgium	France	Netherlands	Ireland	Italy	Switzerland	Denmark	Finland	Norway	Sweden	Nordics	Others	International	Mainland	TOTAL
2023	131,852	14,377	6,317	19,186	5,324	36,047	8,019	-	-	-	-	-	1,872	9,896	232,889	39,679	272,568
2024	143,880	13,216	7,401	18,990	6,239	33,470	5,197	-	-	-	-	-	1,634	11,093	241,120	29,383	270,502
Change	12,028	-1,161	1,084	-196	915	-2,577	-2,822	--	--	--	--	--	-238	1,197	8,231	-10,296	-2,066
Change, %	9.1%	-8.1%	17.2%	-1.0%	17.2%	-7.1%	-35.2%	--	--	--	--	--	-12.7%	12.1%	3.5%	-25.9%	-0.8%

FUERTEVENTURA

	United Kingdom	Germany	Belgium	France	Netherlands	Ireland	Italy	Switzerland	Denmark	Finland	Norway	Sweden	Nordics	Others	International	Mainland	TOTAL
2023	58,833	54,300	2,180	14,242	3,904	5,731	9,454	-	-	-	-	-	3,526	21,716	173,886	20,739	194,625
2024	65,921	56,356	2,789	11,124	4,160	5,800	11,563	-	-	-	-	-	3,614	25,252	186,579	22,115	208,694
Change	7,088	2,056	609	-3,118	256	69	2,109	--	--	--	--	--	88	3,536	12,693	1,376	14,069
Change, %	12.0%	3.8%	27.9%	-21.9%	6.6%	1.2%	22.3%	--	--	--	--	--	2.5%	16.3%	7.3%	6.6%	7.2%

GRAN CANARIA

	United Kingdom	Germany	Belgium	France	Netherlands	Ireland	Italy	Switzerland	Denmark	Finland	Norway	Sweden	Nordics	Others	International	Mainland	TOTAL
2023	84,549	46,967	11,955	13,442	24,028	9,468	8,793	-	-	-	-	-	32,249	38,276	269,727	52,159	321,886
2024	88,946	46,222	13,427	13,869	25,679	10,345	8,605	-	-	-	-	-	33,384	36,843	277,318	46,658	323,976
Change	4,397	-745	1,472	427	1,651	877	-188	--	--	--	--	--	1,135	-1,433	7,591	-5,501	2,090
Change, %	5.2%	-1.6%	12.3%	3.2%	6.9%	9.3%	-2.1%	--	--	--	--	--	3.5%	-3.7%	2.8%	-10.5%	0.6%

TENERIFE

	United Kingdom	Germany	Belgium	France	Netherlands	Ireland	Italy	Switzerland	Denmark	Finland	Norway	Sweden	Nordics	Others	International	Mainland	TOTAL
2023	215,302	40,574	21,312	26,760	19,674	18,546	21,290	-	-	-	-	-	6,725	58,577	428,758	90,057	518,815
2024	233,524	43,495	27,201	31,828	20,569	21,269	32,064	-	-	-	-	-	6,332	73,129	489,411	91,101	580,512
Change	18,222	2,921	5,889	5,068	895	2,723	10,774	--	--	--	--	--	-393	14,552	60,653	1,044	61,697
Change, %	8.5%	7.2%	27.6%	18.9%	4.5%	14.7%	50.6%	--	--	--	--	--	-5.8%	24.8%	14.1%	1.2%	11.9%

LA PALMA

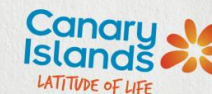
	United Kingdom	Germany	Belgium	France	Netherlands	Ireland	Italy	Switzerland	Denmark	Finland	Norway	Sweden	Nordics	Others	International	Mainland	TOTAL
2023	747	1,627	236	266	374	0	155	-	-	-	-	-	14	1,869	5,289	6,459	11,748
2024	760	2,821	344	304	1,208	0	143	-	-	-	-	-	26	1,700	7,306	4,579	11,885
Change	13	1,194	108	38	834	0	-12	--	--	--	--	--	12	-169	2,017	-1,880	137
Change, %	1.7%	73.4%	45.8%	14.3%	223.0%	--	-7.7%	--	--	--	--	--	85.7%	-9.0%	38.1%	-29.1%	1.2%

Source: Frontur (ISTAC). Tourist arrivals by air.

Note: on the result of the estimated Canary Islands total arrivals, tourists from La Gomera and El Hierro are included. Only main tourists are taken into account in each island.

Tourist arrivals in the Canary Islands (ISTAC)

January - July 2024



CANARY ISLANDS

	United Kingdom	Germany	Belgium	France	Netherlands	Ireland	Italy	Switzerland	Denmark	Finland	Norway	Sweden	Nordics	Others	International	Mainland	TOTAL
2023	3,164,946	1,426,588	250,065	489,484	350,507	414,094	358,388	104,134	184,486	109,743	218,693	214,733	727,655	779,921	8,065,777	1,106,836	9,172,614
2024	3,531,795	1,585,918	279,251	530,857	424,294	473,225	425,459	108,178	177,061	101,052	258,042	227,238	763,393	893,376	9,015,744	1,123,484	10,139,227
Change	366,849	159,330	29,186	41,373	73,787	59,131	67,071	4,044	-7,425	-8,691	39,349	12,505	35,738	113,455	949,967	16,648	966,613
Change, %	11.6%	11.2%	11.7%	8.5%	21.1%	14.3%	18.7%	3.9%	-4.0%	-7.9%	18.0%	5.8%	4.9%	14.5%	11.8%	1.5%	10.5%

LANZAROTE

	United Kingdom	Germany	Belgium	France	Netherlands	Ireland	Italy	Switzerland	Denmark	Finland	Norway	Sweden	Nordics	Others	International	Mainland	TOTAL
2023	849,989	140,990	35,367	125,402	46,684	202,877	53,853	-	-	-	-	-	38,759	62,216	1,556,132	178,631	1,734,762
2024	945,702	153,466	40,501	135,258	53,886	209,810	45,228	-	-	-	-	-	33,992	76,386	1,694,228	155,106	1,849,332
Change	95,713	12,476	5,134	9,856	7,202	6,933	-8,625	--	--	--	--	--	-4,767	14,170	138,096	-23,525	114,570
Change, %	11.3%	8.8%	14.5%	7.9%	15.4%	3.4%	-16.0%	--	--	--	--	--	-12.3%	22.8%	8.9%	-13.2%	6.6%

FUERTEVENTURA

	United Kingdom	Germany	Belgium	France	Netherlands	Ireland	Italy	Switzerland	Denmark	Finland	Norway	Sweden	Nordics	Others	International	Mainland	TOTAL
2023	394,569	399,796	14,223	79,441	33,653	34,617	65,188	-	-	-	-	-	38,829	127,959	1,188,273	96,597	1,284,869
2024	438,336	427,516	17,849	76,637	43,318	40,675	77,331	-	-	-	-	-	40,173	148,064	1,309,901	104,030	1,413,930
Change	43,767	27,720	3,626	-2,804	9,665	6,058	12,143	--	--	--	--	--	1,344	20,105	121,628	7,433	129,061
Change, %	11.1%	6.9%	25.5%	-3.5%	28.7%	17.5%	18.6%	--	--	--	--	--	3.5%	15.7%	10.2%	7.7%	10.0%

GRAN CANARIA

	United Kingdom	Germany	Belgium	France	Netherlands	Ireland	Italy	Switzerland	Denmark	Finland	Norway	Sweden	Nordics	Others	International	Mainland	TOTAL
2023	510,714	444,078	63,066	89,151	144,724	62,980	69,727	-	-	-	-	-	455,671	242,194	2,082,307	299,077	2,381,384
2024	578,790	486,590	69,360	94,634	175,032	74,101	76,750	-	-	-	-	-	488,156	259,707	2,303,119	317,254	2,620,374
Change	68,076	42,512	6,294	5,483	30,308	11,121	7,023	--	--	--	--	--	32,485	17,513	220,812	18,177	238,990
Change, %	13.3%	9.6%	10.0%	6.2%	20.9%	17.7%	10.1%	--	--	--	--	--	7.1%	7.2%	10.6%	6.1%	10.0%

TENERIFE

	United Kingdom	Germany	Belgium	France	Netherlands	Ireland	Italy	Switzerland	Denmark	Finland	Norway	Sweden	Nordics	Others	International	Mainland	TOTAL
2023	1,398,492	406,818	134,260	191,540	120,783	113,122	168,651	-	-	-	-	-	188,913	438,402	3,160,978	500,810	3,661,786
2024	1,558,417	465,324	149,113	220,905	144,020	148,422	224,774	-	-	-	-	-	195,674	506,751	3,613,394	519,746	4,133,140
Change	159,925	58,506	14,853	29,365	23,237	35,300	56,123	--	--	--	--	--	6,761	68,349	452,416	18,936	471,354
Change, %	11.4%	14.4%	11.1%	15.3%	19.2%	31.2%	33.3%	--	--	--	--	--	3.6%	15.6%	14.3%	3.8%	12.9%

LA PALMA

	United Kingdom	Germany	Belgium	France	Netherlands	Ireland	Italy	Switzerland	Denmark	Finland	Norway	Sweden	Nordics	Others	International	Mainland	TOTAL
2023	7,324	21,811	2,312	2,310	4,249	240	699	-	-	-	-	-	3,849	9,555	52,349	24,937	77,287
2024	7,817	42,212	1,733	2,736	7,706	62	1,164	-	-	-	-	-	4,008	8,444	75,881	22,902	98,783
Change	493	20,401	-579	426	3,457	-178	465	--	--	--	--	--	159	-1,111	23,532	-2,035	21,496
Change, %	6.7%	93.5%	-25.0%	18.4%	81.4%	-74.2%	66.5%	--	--	--	--	--	4.1%	-11.6%	45.0%	-8.2%	27.8%

Source: Frontur (ISTAC). Tourist arrivals by air.

Note: on the result of the estimated Canary Islands total arrivals, tourists from La Gomera and El Hierro are included. Only main tourists are taken into account in each island.

International tourist arrivals in Spain (INE)

July 2024



BY COUNTRY OF RESIDENCE

Monthly

	UK	Germany	Belgium	France	Netherlands	Ireland	Italy	Switzerland	Denmark	Finland	Norway	Sweden	Nordics	Russia	Portugal	Austria	Others	INTERNATIONAL
Jul-23	1,998,014	1,173,471	456,408	1,562,150	599,314	299,760	543,476	254,900	160,911	32,244	198,320	193,008	584,483	0	351,766	169,856	2,123,318	10,116,916
Jul-24	2,049,671	1,250,364	503,140	1,615,540	698,412	314,420	562,695	305,304	172,882	32,622	202,841	222,171	630,516	0	370,289	159,866	2,390,955	10,851,172
Change	51,657	76,893	46,732	53,390	99,098	14,660	19,219	50,404	11,971	378	4,521	29,163	46,033	--	18,523	-9,990	267,637	734,256
Change, %	2.6%	6.6%	10.2%	3.4%	16.5%	4.9%	3.5%	19.8%	7.4%	1.2%	2.3%	15.1%	7.9%	--	5.3%	-5.9%	12.6%	7.3%

Year-to-date

	UK	Germany	Belgium	France	Netherlands	Ireland	Italy	Switzerland	Denmark	Finland	Norway	Sweden	Nordics	Russia	Portugal	Austria	Others	INTERNATIONAL
Jan-Jul 23	9,709,101	6,181,623	1,555,574	6,380,096	2,426,705	1,407,463	2,616,503	1,123,021	707,199	324,511	812,652	962,287	2,806,649	0	1,505,720	808,039	11,135,361	47,655,855
Jan-Jul 24	10,542,852	6,803,899	1,849,849	7,057,167	2,802,147	1,622,299	2,969,276	1,267,876	723,482	351,643	886,238	1,105,589	3,066,952	--	1,560,776	656,105	13,177,962	53,377,160
Change	833,751	622,276	294,275	677,071	375,442	214,836	352,773	144,855	16,283	27,132	73,586	143,302	260,303	--	55,056	-151,934	2,042,601	5,721,305
Change, %	8.6%	10.1%	18.9%	10.6%	15.5%	15.3%	13.5%	12.9%	2.3%	8.4%	9.1%	14.9%	9.3%	--	3.7%	-18.8%	18.3%	12.0%

BY AUTONOMOUS COMMUNITY

Monthly

	Canary Islands	Andalusia	Aragon	Asturias	aric Islands	Cantabria	C. y Leon	C. La Mancha	Catalonia	Iencian Region	Extremadura	Galicia	Madrid	Murcia	Navarre	ue Country	La Rioja	SPAIN
Jul-23	1,070,553	1,344,993	43,669	72,324	2,437,374	64,088	149,407	13,297	2,309,021	1,332,110	32,661	163,065	664,448	100,080	62,326	243,031	0	10,116,916
Jul-24	1,161,015	1,461,773	46,488	64,621	2,542,500	80,526	150,968	25,556	2,394,535	1,476,378	0	184,325	743,601	141,135	88,445	258,259	0	10,851,172
Change	90,462	116,780	2,819	-7,703	105,126	16,438	1,561	12,259	85,514	144,268	-32,661	21,260	79,153	41,055	26,119	15,228	0	734,256
Change, %	8.5%	8.7%	6.5%	-10.7%	4.3%	25.6%	1.0%	92.2%	3.7%	10.8%	-100.0%	13.0%	11.9%	41.0%	41.9%	6.3%	--	7.3%

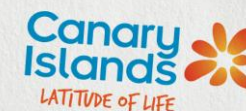
Year-to-date

	Canary Islands	Andalusia	Aragon	Asturias	aric Islands	Cantabria	C. y Leon	C. La Mancha	Catalonia	Iencian Region	Extremadura	Galicia	Madrid	Murcia	Navarre	ue Country	La Rioja	SPAIN
Jan-Jul 23	7,885,318	6,845,499	244,529	206,025	8,147,790	228,741	637,625	67,458	10,374,243	5,760,041	85,783	778,566	4,349,255	508,847	140,264	1,104,928	10,759	47,655,855
Jan-Jul 24	8,699,875	7,733,415	253,012	144,153	8,715,336	268,104	702,691	68,539	11,461,378	6,786,222	34,122	932,556	5,181,359	616,774	193,952	1,222,892	0	53,377,160
Change	814,557	887,916	8,483	-61,872	567,546	39,363	65,066	1,081	1,087,135	1,026,181	-51,661	153,990	832,104	107,927	53,688	117,964	-10,759	5,721,305
Change, %	10.3%	13.0%	3.5%	-30.0%	7.0%	17.2%	10.2%	1.6%	10.5%	17.8%	-60.2%	19.8%	19.1%	21.2%	38.3%	10.7%	-100.0%	12.0%

Note: Since March 2022, "Russia" is included in Others. Source: Frontur (INE).

Tourist arrivals in the Canary Islands (ISTAC)

July 2024



Number of tourists by holiday package booking and country of residence

July 2024

	Book	Do not book	TOTAL	% Book	% Do not book
International	699,004	503,993	1,202,996	58.1%	41.9%
- Germany	118,880	43,793	162,672	73.1%	26.9%
- Netherlands	44,717	13,191	57,908	77.2%	22.8%
- Ireland	25,497	45,387	70,884	36.0%	64.0%
- Nordics	24,691	20,343	45,034	54.8%	45.2%
- United Kingdom	331,336	202,017	533,353	62.1%	37.9%
- Switzerland	6,314	10,124	16,438	38.4%	61.6%
- Others	147,569	169,138	316,707	46.6%	53.4%
Spanish Mainland	44,462	149,882	194,344	22.9%	77.1%
TOTAL	743,466	653,875	1,397,340	53.2%	46.8%

January - July 2024

	Book	Do not book	TOTAL	% Book	% Do not book
International	4,825,297	4,190,451	9,015,747	53.5%	46.5%
- Germany	1,025,780	560,139	1,585,918	64.7%	35.3%
- Netherlands	274,264	150,031	424,294	64.6%	35.4%
- Ireland	168,504	304,721	473,225	35.6%	64.4%
- Nordics	473,302	290,093	763,396	62.0%	38.0%
- United Kingdom	2,100,967	1,430,828	3,531,795	59.5%	40.5%
- Switzerland	36,047	72,132	108,178	33.3%	66.7%
- Others	746,433	1,382,507	2,128,941	35.1%	64.9%
Spanish Mainland	236,400	887,083	1,123,484	21.0%	79.0%
TOTAL	5,061,697	5,077,534	10,139,231	49.9%	50.1%

Share of tourists by accommodation type and country of residence

July 2024

	Hotels and similar	Apartments	Property	Cruise	House of friend or relative	Others
International	69.1%	20.2%	2.4%	0.4%	3.0%	4.9%
- Germany	78.8%	13.0%	2.8%	0.0%	3.1%	2.3%
- Netherlands	69.9%	26.1%	1.0%	0.0%	1.0%	2.0%
- Ireland	53.3%	34.3%	1.8%	0.2%	2.6%	7.8%
- Nordics	65.6%	21.4%	5.9%	0.0%	4.1%	2.9%
- United Kingdom	66.6%	24.5%	1.7%	1.0%	2.2%	4.0%
- Switzerland	65.0%	20.0%	3.9%	0.0%	6.7%	4.4%
- Others	72.3%	12.3%	3.0%	0.0%	4.5%	7.9%
Spanish Mainland	60.9%	13.4%	0.7%	0.0%	12.6%	12.3%
TOTAL	67.9%	19.3%	2.1%	0.4%	4.3%	5.9%

January - July 2024

	Hotels and similar	Apartments	Property	Cruise	House of friend or relative	Others
International	66.1%	19.6%	2.5%	3.0%	3.5%	5.3%
- Germany	66.7%	10.8%	3.4%	11.0%	3.3%	4.8%
- Netherlands	67.9%	24.3%	1.4%	0.7%	2.1%	3.6%
- Ireland	57.7%	32.6%	1.6%	0.4%	2.6%	5.1%
- Nordics	64.5%	27.8%	2.8%	0.1%	2.6%	2.3%
- United Kingdom	66.4%	23.0%	2.0%	2.4%	2.2%	4.0%
- Switzerland	68.1%	17.7%	3.0%	0.7%	5.2%	5.3%
- Others	67.1%	13.7%	3.2%	0.2%	6.3%	9.5%
Spanish Mainland	58.1%	9.7%	1.6%	0.0%	19.5%	11.1%
TOTAL	65.2%	18.5%	2.4%	2.7%	5.2%	6.0%

Source: Frontur (ISTAC). Tourist arrivals by air.

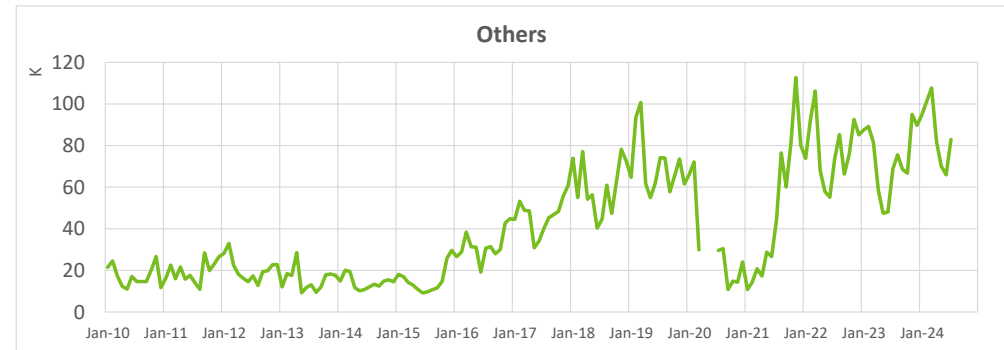
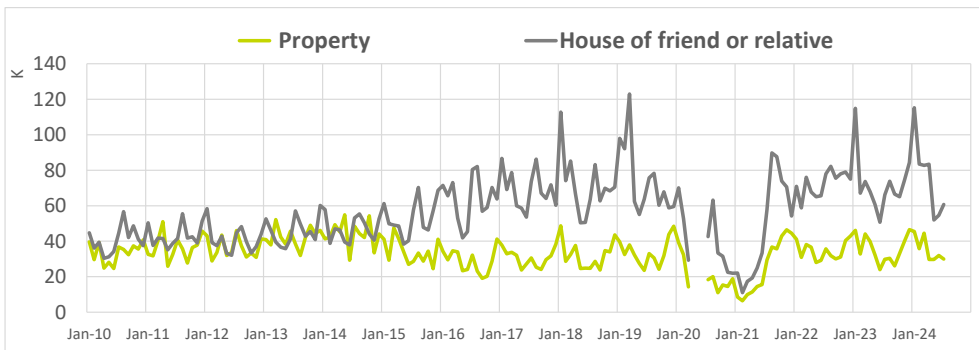
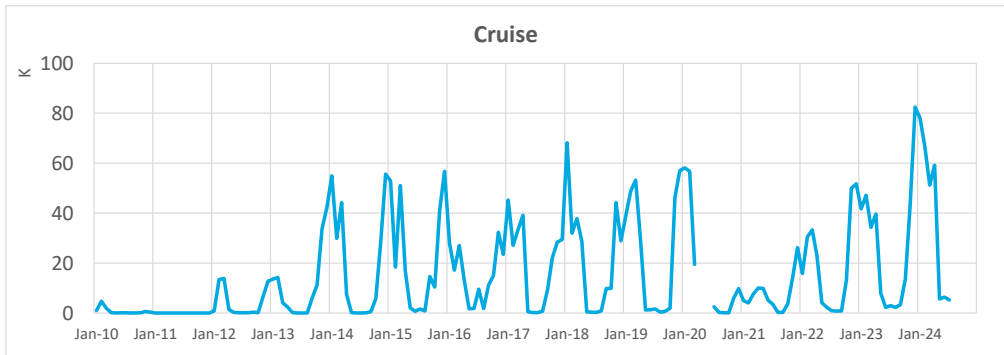
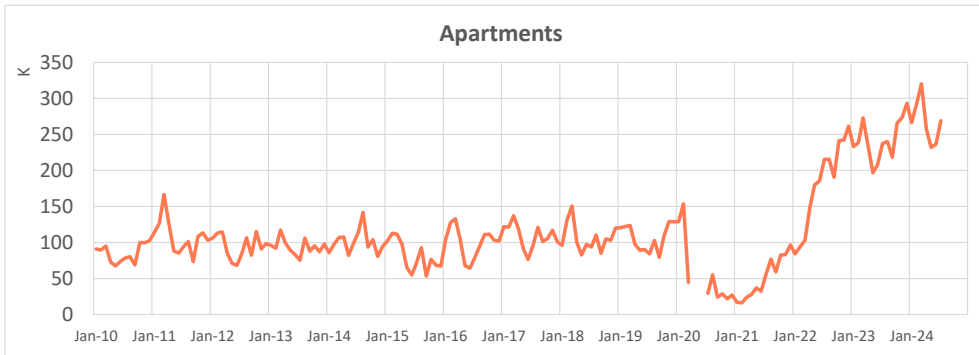
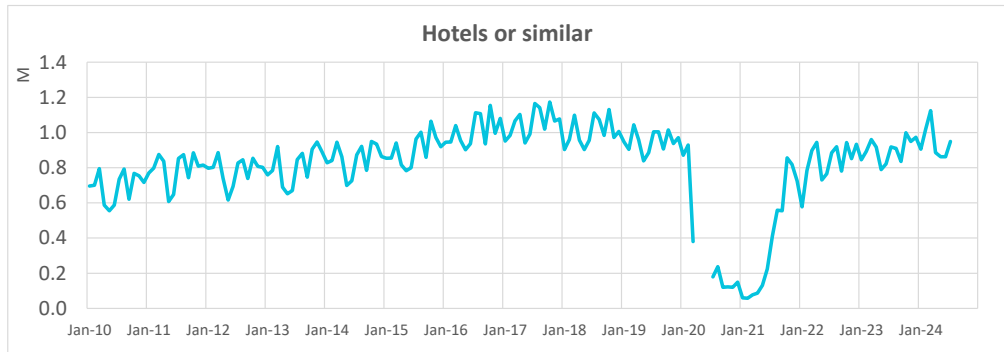
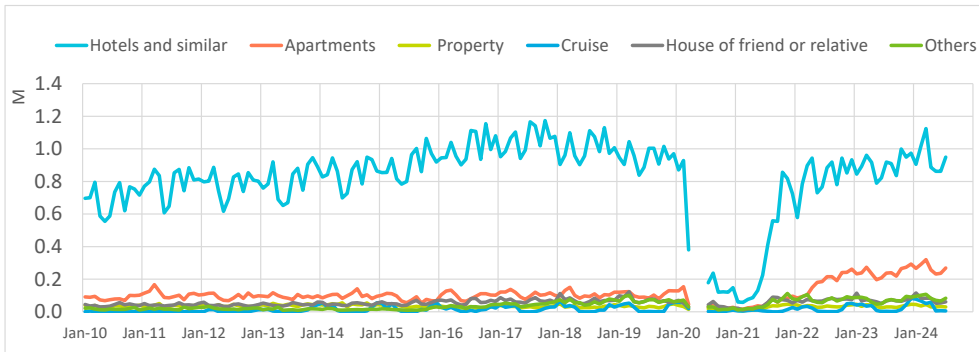
Note: on the result of the estimated Canary Islands total arrivals, tourists from La Gomera and El Hierro are included.

Tourist arrivals in the Canary Islands (ISTAC)

July 2024



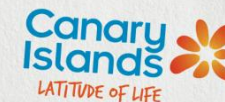
Number of tourists by type of accommodation



Source: Frontur (ISTAC). Tourist arrivals by air.

Tourist arrivals in the Canary Islands (ISTAC)

July 2024



Number of tourists by holiday package booking and island of stay

		July 2024					
		Lanzarote	Fuerteventura	Gran Canaria	Tenerife	La Palma	CANARY ISLANDS
Book	Total	156,025	147,348	196,339	251,311	6,286	743,466
	- International	148,384	141,942	185,017	231,786	5,582	699,004
	- Spanish Mainland	7,641	5,406	11,322	19,525	704	44,462
Do not book	Total	119,338	65,654	135,056	334,227	9,618	653,875
	- International	97,076	48,515	98,686	260,527	5,667	503,993
	- Spanish Mainland	22,262	17,139	36,370	73,700	3,951	149,882
TOTAL	All markets	275,363	213,001	331,394	585,538	15,904	1,397,340
	- International	245,460	190,457	283,703	492,314	11,249	1,202,996
	- Spanish Mainland	29,903	22,544	47,691	93,224	4,655	194,344
% book package	Total	56.7%	69.2%	59.2%	42.9%	39.5%	53.2%
	- International	60.5%	74.5%	65.2%	47.1%	49.6%	58.1%
	- Spanish Mainland	25.6%	24.0%	23.7%	20.9%	15.1%	22.9%

		January - July 2024					
		Lanzarote	Fuerteventura	Gran Canaria	Tenerife	La Palma	CANARY ISLANDS
Book	Total	1,120,110	956,219	1,427,521	1,781,602	61,738	5,061,697
	- International	1,079,261	930,983	1,380,220	1,659,103	58,975	4,825,297
	- Spanish Mainland	40,849	25,236	47,301	122,499	2,763	236,400
Do not book	Total	825,560	551,404	1,263,902	2,435,215	81,998	5,077,534
	- International	707,686	470,166	988,850	2,028,050	60,545	4,190,451
	- Spanish Mainland	117,874	81,238	275,052	407,165	21,453	887,083
TOTAL	All markets	1,945,669	1,507,622	2,691,420	4,216,817	143,737	10,139,231
	- International	1,786,946	1,401,148	2,369,069	3,687,154	119,520	9,015,747
	- Spanish Mainland	158,723	106,474	322,351	529,663	24,217	1,123,484
% book package	Total	57.6%	63.4%	53.0%	42.2%	43.0%	49.9%
	- International	60.4%	66.4%	58.3%	45.0%	49.3%	53.5%
	- Spanish Mainland	25.7%	23.7%	14.7%	23.1%	11.4%	21.0%

Share of tourists by accommodation type and island of stay

		July 2024					
		Lanzarote	Fuerteventura	Gran Canaria	Tenerife	La Palma	CANARY ISLANDS
International	Hotels	59.6%	81.2%	71.7%	66.4%	31.6%	69.1%
	Apartments	26.0%	10.8%	20.1%	20.5%	18.2%	20.2%
	Property	1.7%	1.9%	1.9%	3.1%	1.1%	2.4%
	Cruise	1.3%	1.5%	1.1%	1.1%	23.9%	0.4%
	House of friend or relative	2.2%	3.4%	3.5%	2.9%	10.5%	3.0%
	Others	9.3%	1.2%	1.5%	6.0%	14.7%	4.9%
	Spanish Mainland	Hotels	63.7%	63.3%	62.1%	59.8%	43.3%
Apartments		17.4%	15.7%	13.8%	12.3%	7.9%	13.4%
Property		0.8%	0.6%	0.3%	0.9%	2.9%	0.7%
Cruise		0.0%	0.0%	0.0%	0.0%	0.0%	0.0%
House of friend or relative		10.7%	9.6%	21.6%	8.6%	22.9%	12.6%
Others		7.4%	10.8%	2.3%	18.4%	23.1%	12.3%
TOTAL		Hotels	60.0%	79.3%	70.3%	65.4%	35.0%
	Apartments	25.1%	11.3%	19.2%	19.2%	15.1%	19.3%
	Property	1.6%	1.7%	1.7%	2.8%	1.6%	2.1%
	Cruise	1.1%	1.3%	1.0%	0.9%	16.9%	0.4%
	House of friend or relative	3.1%	4.0%	6.1%	3.8%	14.1%	4.3%
	Others	9.1%	2.2%	1.7%	8.0%	17.2%	5.9%

		January - July 2024					
		Lanzarote	Fuerteventura	Gran Canaria	Tenerife	La Palma	CANARY ISLANDS
International	Hotels	61.3%	75.6%	64.0%	62.0%	30.5%	66.1%
	Apartments	25.9%	10.3%	20.1%	18.6%	16.3%	19.6%
	Property	1.6%	2.1%	2.2%	3.2%	2.2%	2.5%
	Cruise	4.3%	5.5%	7.4%	4.8%	28.1%	3.0%
	House of friend or relative	1.7%	3.2%	4.2%	3.7%	6.2%	3.5%
	Others	5.1%	3.3%	2.2%	7.6%	16.7%	5.3%
	Spanish Mainland	Hotels	63.5%	64.0%	54.7%	58.5%	43.7%
Apartments		12.8%	11.3%	8.8%	9.3%	5.5%	9.7%
Property		0.9%	2.1%	1.9%	1.4%	3.4%	1.6%
Cruise		0.0%	0.0%	0.0%	0.0%	0.2%	0.0%
House of friend or relative		13.1%	14.8%	29.6%	15.8%	21.2%	19.5%
Others		9.7%	7.8%	4.9%	14.9%	26.0%	11.1%
TOTAL		Hotels	61.5%	74.8%	62.8%	61.6%	32.8%
	Apartments	24.8%	10.3%	18.7%	17.4%	14.4%	18.5%
	Property	1.6%	2.1%	2.1%	3.0%	2.4%	2.4%
	Cruise	4.0%	5.2%	6.5%	4.2%	23.4%	2.7%
	House of friend or relative	2.7%	4.0%	7.2%	5.2%	8.8%	5.2%
	Others	5.5%	3.6%	2.6%	8.5%	18.2%	6.0%

Source: Frontur (ISTAC). Tourist arrivals by air.

Note: in the islands are included tourists who have chosen the island as the main destination of their trip or as a secondary destination.