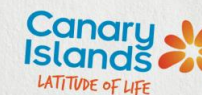


Tourist arrivals in the Canary Islands (ISTAC)

September 2024



CANARY ISLANDS

	United Kingdom	Germany	Belgium	France	Netherlands	Ireland	Italy	Switzerland	Denmark	Finland	Norway	Sweden	Nordics	Others	International	Mainland	TOTAL
2023	460,574	173,956	31,780	60,727	52,673	59,081	48,397	11,612	8,303	1,048	14,357	7,841	31,549	95,941	1,026,289	192,142	1,218,431
2024	504,800	181,032	34,126	62,899	55,148	62,952	65,599	11,074	7,651	451	13,732	5,272	27,106	121,271	1,126,007	195,742	1,321,749
Change	44,226	7,076	2,346	2,172	2,475	3,871	17,202	-538	-652	-597	-625	-2,569	-4,443	25,330	99,718	3,600	103,318
Change, %	9.6%	4.1%	7.4%	3.6%	4.7%	6.6%	35.5%	-4.6%	-7.9%	-57.0%	-4.4%	-32.8%	-14.1%	26.4%	9.7%	1.9%	8.5%

LANZAROTE

	United Kingdom	Germany	Belgium	France	Netherlands	Ireland	Italy	Switzerland	Denmark	Finland	Norway	Sweden	Nordics	Others	International	Mainland	TOTAL
2023	120,768	15,408	4,141	16,265	4,441	28,936	8,001	-	-	-	-	-	2,118	6,867	206,944	33,699	240,643
2024	136,620	15,384	4,567	14,963	6,609	30,560	5,244	-	-	-	-	-	1,693	8,057	223,697	27,481	251,178
Change	15,852	-24	426	-1,302	2,168	1,624	-2,757	--	--	--	--	--	-425	1,190	16,753	-6,218	10,535
Change, %	13.1%	-0.2%	10.3%	-8.0%	48.8%	5.6%	-34.5%	--	--	--	--	--	-20.1%	17.3%	8.1%	-18.5%	4.4%

FUERTEVENTURA

	United Kingdom	Germany	Belgium	France	Netherlands	Ireland	Italy	Switzerland	Denmark	Finland	Norway	Sweden	Nordics	Others	International	Mainland	TOTAL
2023	56,499	58,407	1,077	9,395	4,583	5,014	10,017	-	-	-	-	-	1,434	18,144	164,572	16,596	181,168
2024	59,364	61,060	1,076	8,719	4,890	5,531	12,413	-	-	-	-	-	2,039	21,633	176,725	15,683	192,409
Change	2,865	2,653	-1	-676	307	517	2,396	--	--	--	--	--	605	3,489	12,153	-913	11,241
Change, %	5.1%	4.5%	-0.1%	-7.2%	6.7%	10.3%	23.9%	--	--	--	--	--	42.2%	19.2%	7.4%	-5.5%	6.2%

GRAN CANARIA

	United Kingdom	Germany	Belgium	France	Netherlands	Ireland	Italy	Switzerland	Denmark	Finland	Norway	Sweden	Nordics	Others	International	Mainland	TOTAL
2023	78,416	52,872	8,998	11,753	23,627	8,271	8,440	-	-	-	-	-	22,409	30,817	245,604	50,031	295,635
2024	87,014	53,201	9,085	11,270	25,317	8,942	10,679	-	-	-	-	-	18,651	36,442	260,601	51,584	312,185
Change	8,598	329	87	-483	1,690	671	2,239	--	--	--	--	--	-3,758	5,625	14,997	1,553	16,550
Change, %	11.0%	0.6%	1.0%	-4.1%	7.2%	8.1%	26.5%	--	--	--	--	--	-16.8%	18.3%	6.1%	3.1%	5.6%

TENERIFE

	United Kingdom	Germany	Belgium	France	Netherlands	Ireland	Italy	Switzerland	Denmark	Finland	Norway	Sweden	Nordics	Others	International	Mainland	TOTAL
2023	203,563	44,411	17,170	22,898	19,389	16,860	21,689	-	-	-	-	-	5,543	49,964	401,487	83,478	484,965
2024	220,558	47,841	19,074	27,309	16,923	17,920	36,977	-	-	-	-	-	4,711	64,610	455,922	95,253	551,175
Change	16,995	3,430	1,904	4,411	-2,466	1,060	15,288	--	--	--	--	--	-832	14,646	54,435	11,775	66,210
Change, %	8.3%	7.7%	11.1%	19.3%	-12.7%	6.3%	70.5%	--	--	--	--	--	-15.0%	29.3%	13.6%	14.1%	13.7%

LA PALMA

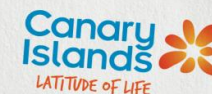
	United Kingdom	Germany	Belgium	France	Netherlands	Ireland	Italy	Switzerland	Denmark	Finland	Norway	Sweden	Nordics	Others	International	Mainland	TOTAL
2023	637	1,608	284	259	538	0	131	-	-	-	-	-	25	1,466	4,948	6,891	11,839
2024	667	2,166	288	462	1,307	0	92	-	-	-	-	-	2	1,546	6,531	3,332	9,863
Change	30	558	4	203	769	0	-39	--	--	--	--	--	-23	80	1,583	-3,559	-1,976
Change, %	4.7%	34.7%	1.4%	78.4%	142.9%	--	-29.8%	--	--	--	--	--	-92.0%	5.5%	32.0%	-51.6%	-16.7%

Source: Frontur (ISTAC). Tourist arrivals by air.

Note: on the result of the estimated Canary Islands total arrivals, tourists from La Gomera and El Hierro are included. Only main tourists are taken into account in each island.

Tourist arrivals in the Canary Islands (ISTAC)

January - September 2024



CANARY ISLANDS

	United Kingdom	Germany	Belgium	France	Netherlands	Ireland	Italy	Switzerland	Denmark	Finland	Norway	Sweden	Nordics	Others	International	Mainland	TOTAL
2023	4,116,532	1,760,167	313,124	624,350	470,737	533,539	465,886	129,095	201,493	111,054	246,887	232,930	792,364	983,199	10,188,986	1,533,412	11,722,399
2024	4,580,113	1,940,153	351,305	687,170	544,391	603,525	556,431	129,835	193,596	101,780	281,798	239,050	816,224	1,143,428	11,352,572	1,558,820	12,911,391
Change	463,581	179,986	38,181	62,820	73,654	69,986	90,545	740	-7,897	-9,274	34,911	6,120	23,860	160,229	1,163,586	25,408	1,188,992
Change, %	11.3%	10.2%	12.2%	10.1%	15.6%	13.1%	19.4%	0.6%	-3.9%	-8.4%	14.1%	2.6%	3.0%	16.3%	11.4%	1.7%	10.1%

LANZAROTE

	United Kingdom	Germany	Belgium	France	Netherlands	Ireland	Italy	Switzerland	Denmark	Finland	Norway	Sweden	Nordics	Others	International	Mainland	TOTAL
2023	1,104,441	169,422	44,214	160,873	59,152	262,225	70,906	-	-	-	-	-	42,928	77,591	1,991,747	253,710	2,245,455
2024	1,232,932	182,419	50,506	173,588	67,664	271,638	56,298	-	-	-	-	-	37,489	94,351	2,166,884	216,453	2,383,335
Change	128,491	12,997	6,292	12,715	8,512	9,413	-14,608	--	--	--	--	--	-5,439	16,760	175,137	-37,257	137,880
Change, %	11.6%	7.7%	14.2%	7.9%	14.4%	3.6%	-20.6%	--	--	--	--	--	-12.7%	21.6%	8.8%	-14.7%	6.1%

FUERTEVENTURA

	United Kingdom	Germany	Belgium	France	Netherlands	Ireland	Italy	Switzerland	Denmark	Finland	Norway	Sweden	Nordics	Others	International	Mainland	TOTAL
2023	510,708	509,461	16,257	101,249	44,175	45,164	86,450	-	-	-	-	-	42,867	167,795	1,524,125	134,933	1,659,057
2024	562,936	549,906	20,189	98,373	52,931	51,728	103,158	-	-	-	-	-	44,497	191,981	1,675,702	141,822	1,817,524
Change	52,228	40,445	3,932	-2,876	8,756	6,564	16,708	--	--	--	--	--	1,630	24,186	151,577	6,889	158,467
Change, %	10.2%	7.9%	24.2%	-2.8%	19.8%	14.5%	19.3%	--	--	--	--	--	3.8%	14.4%	9.9%	5.1%	9.6%

GRAN CANARIA

	United Kingdom	Germany	Belgium	France	Netherlands	Ireland	Italy	Switzerland	Denmark	Finland	Norway	Sweden	Nordics	Others	International	Mainland	TOTAL
2023	673,458	546,800	80,221	116,068	194,616	81,201	89,009	-	-	-	-	-	501,154	308,294	2,590,823	407,303	2,998,126
2024	759,374	586,842	89,610	124,357	230,442	92,949	98,396	-	-	-	-	-	523,667	333,463	2,839,099	428,873	3,267,972
Change	85,916	40,042	9,389	8,289	35,826	11,748	9,387	--	--	--	--	--	22,513	25,169	248,276	21,570	269,846
Change, %	12.8%	7.3%	11.7%	7.1%	18.4%	14.5%	10.5%	--	--	--	--	--	4.5%	8.2%	9.6%	5.3%	9.0%

TENERIFE

	United Kingdom	Germany	Belgium	France	Netherlands	Ireland	Italy	Switzerland	Denmark	Finland	Norway	Sweden	Nordics	Others	International	Mainland	TOTAL
2023	1,813,327	493,511	168,482	241,551	166,738	144,451	218,183	-	-	-	-	-	199,727	541,270	3,987,236	689,726	4,676,960
2024	2,011,518	560,778	187,964	286,279	182,611	186,959	296,802	-	-	-	-	-	205,055	639,060	4,557,020	730,825	5,287,844
Change	198,191	67,267	19,482	44,728	15,873	42,508	78,619	--	--	--	--	--	5,328	97,790	569,784	41,099	610,884
Change, %	10.9%	13.6%	11.6%	18.5%	9.5%	29.4%	36.0%	--	--	--	--	--	2.7%	18.1%	14.3%	6.0%	13.1%

LA PALMA

	United Kingdom	Germany	Belgium	France	Netherlands	Ireland	Italy	Switzerland	Denmark	Finland	Norway	Sweden	Nordics	Others	International	Mainland	TOTAL
2023	9,536	25,284	2,770	2,798	5,524	240	950	-	-	-	-	-	3,874	13,043	64,018	37,912	101,932
2024	9,492	47,300	2,292	3,584	10,290	62	1,311	-	-	-	-	-	4,085	12,111	90,527	31,847	122,374
Change	-44	22,016	-478	786	4,766	-178	361	--	--	--	--	--	211	-932	26,509	-6,065	20,442
Change, %	-0.5%	87.1%	-17.3%	28.1%	86.3%	-74.2%	38.0%	--	--	--	--	--	5.4%	-7.1%	41.4%	-16.0%	20.1%

Source: Frontur (ISTAC). Tourist arrivals by air.

Note: on the result of the estimated Canary Islands total arrivals, tourists from La Gomera and El Hierro are included. Only main tourists are taken into account in each island.

International tourist arrivals in Spain (INE)

September 2024



BY COUNTRY OF RESIDENCE

Monthly

	UK	Germany	Belgium	France	Netherlands	Ireland	Italy	Switzerland	Denmark	Finland	Norway	Sweden	Nordics	Russia	Portugal	Austria	Others	INTERNATIONAL
Sep-23	1,943,531	1,295,042	280,499	958,862	472,981	266,490	431,025	210,850	100,946	35,656	116,576	152,041	405,219	0	281,754	130,790	2,118,382	8,795,425
Sep-24	2,046,444	1,309,425	315,624	1,095,777	496,917	296,195	505,406	210,747	113,176	38,929	129,186	157,560	438,851	0	303,152	163,140	2,413,458	9,595,136
Change	102,913	14,383	35,125	136,915	23,936	29,705	74,381	-103	12,230	3,273	12,610	5,519	33,632	--	21,398	32,350	295,076	799,711
Change, %	5.3%	1.1%	12.5%	14.3%	5.1%	11.1%	17.3%	0.0%	12.1%	9.2%	10.8%	3.6%	8.3%	--	7.6%	24.7%	13.9%	9.1%

Year-to-date

	UK	Germany	Belgium	France	Netherlands	Ireland	Italy	Switzerland	Denmark	Finland	Norway	Sweden	Nordics	Russia	Portugal	Austria	Others	INTERNATIONAL
Jan-Sep 23	13,689,631	8,658,592	2,167,744	9,313,692	3,454,811	1,956,481	3,789,715	1,544,418	902,059	381,040	1,018,798	1,240,516	3,542,413	0	2,248,237	1,077,339	15,194,370	66,637,443
Jan-Sep 24	14,708,846	9,354,971	2,500,218	10,291,966	3,881,157	2,207,407	4,262,864	1,676,996	929,969	411,272	1,106,028	1,385,604	3,832,873	--	2,392,822	939,871	17,853,055	73,903,046
Change	1,019,215	696,379	332,474	978,274	426,346	250,926	473,149	132,578	27,910	30,232	87,230	145,088	290,460	--	144,585	-137,468	2,658,685	7,265,603
Change, %	7.4%	8.0%	15.3%	10.5%	12.3%	12.8%	12.5%	8.6%	3.1%	7.9%	8.6%	11.7%	8.2%	--	6.4%	-12.8%	17.5%	10.9%

BY AUTONOMOUS COMMUNITY

Monthly

	Canary Islands	Andalusia	Aragon	Asturias	Canary Islands	Cantabria	C. y Leon	C. La Mancha	Catalonia	Canarian Region	Extremadura	Galicia	Madrid	Murcia	Navarre	Basque Country	La Rioja	SPAIN
Sep-23	1,026,257	1,300,924	45,414	38,073	2,061,298	46,614	115,988	22,787	1,818,670	1,042,340	17,274	166,960	769,335	103,720	36,060	167,256	0	8,795,425
Sep-24	1,105,851	1,435,271	58,255	40,433	2,147,685	48,043	130,832	22,383	2,033,263	1,196,583	0	187,066	817,242	110,278	44,656	186,079	13,942	9,595,136
Change	79,594	134,347	12,841	2,360	86,387	1,429	14,844	-404	214,593	154,243	-17,274	20,106	47,907	6,558	8,596	18,823	13,942	799,711
Change, %	7.8%	10.3%	28.3%	6.2%	4.2%	3.1%	12.8%	-1.8%	11.8%	14.8%	-100.0%	12.0%	6.2%	6.3%	23.8%	11.3%	--	9.1%

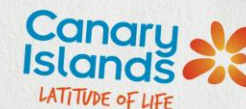
Year-to-date

	Canary Islands	Andalusia	Aragon	Asturias	Canary Islands	Cantabria	C. y Leon	C. La Mancha	Catalonia	Canarian Region	Extremadura	Galicia	Madrid	Murcia	Navarre	Basque Country	La Rioja	SPAIN
Jan-Sep 23	9,974,393	9,612,757	333,372	311,557	12,568,530	366,775	968,528	114,701	14,347,123	8,075,046	137,708	1,222,499	5,743,764	757,525	208,266	1,541,708	10,759	66,637,443
Jan-Sep 24	10,971,295	10,770,832	373,669	233,992	13,309,497	402,236	1,059,271	118,072	15,782,487	9,455,226	59,199	1,425,492	6,637,917	914,141	298,377	1,672,280	13,942	73,903,046
Change	996,902	1,158,075	40,297	-77,565	740,967	35,461	90,743	3,371	1,435,364	1,380,180	-78,509	202,993	894,153	156,616	90,111	130,572	3,183	7,265,603
Change, %	10.0%	12.0%	12.1%	-24.9%	5.9%	9.7%	9.4%	2.9%	10.0%	17.1%	-57.0%	16.6%	15.6%	20.7%	43.3%	8.5%	29.6%	10.9%

Note: Since March 2022, "Russia" is included in Others. Source: Frontur (INE).

Tourist arrivals in the Canary Islands (ISTAC)

September 2024



Number of tourists by holiday package booking and country of residence

September 2024

	Book	Do not book	TOTAL	% Book	% Do not book
International	630,093	495,914	1,126,007	56.0%	44.0%
- Germany	123,007	58,025	181,032	67.9%	32.1%
- Netherlands	40,863	14,285	55,148	74.1%	25.9%
- Ireland	26,639	36,313	62,952	42.3%	57.7%
- Nordics	17,379	9,727	27,106	64.1%	35.9%
- United Kingdom	305,434	199,366	504,800	60.5%	39.5%
- Switzerland	4,540	6,534	11,074	41.0%	59.0%
- Others	112,231	171,664	283,895	39.5%	60.5%
Spanish Mainland	38,149	157,593	195,742	19.5%	80.5%
TOTAL	668,242	653,507	1,321,749	50.6%	49.4%

January - September 2024

	Book	Do not book	TOTAL	% Book	% Do not book
International	6,144,013	5,208,565	11,352,575	54.1%	45.9%
- Germany	1,267,957	672,197	1,940,153	65.4%	34.6%
- Netherlands	362,755	181,637	544,391	66.6%	33.4%
- Ireland	220,192	383,333	603,525	36.5%	63.5%
- Nordics	504,667	311,559	816,226	61.8%	38.2%
- United Kingdom	2,736,482	1,843,631	4,580,113	59.7%	40.3%
- Switzerland	45,890	83,946	129,835	35.3%	64.7%
- Others	1,006,070	1,732,262	2,738,332	36.7%	63.3%
Spanish Mainland	329,586	1,229,233	1,558,820	21.1%	78.9%
TOTAL	6,473,599	6,437,798	12,911,395	50.1%	49.9%

Share of tourists by accommodation type and country of residence

September 2024

	Hotels and similar	Apartments	Property	Cruise	House of friend or relative	Others
International	67.1%	19.8%	2.3%	0.1%	3.6%	7.0%
- Germany	76.8%	12.0%	3.2%	0.1%	3.4%	4.5%
- Netherlands	71.9%	23.0%	1.0%	0.0%	1.1%	3.0%
- Ireland	50.5%	36.8%	3.5%	0.3%	2.7%	6.2%
- Nordics	63.3%	23.9%	5.9%	0.0%	4.7%	2.2%
- United Kingdom	66.1%	24.6%	1.9%	0.0%	2.3%	5.0%
- Switzerland	64.9%	16.8%	3.3%	0.0%	5.2%	9.8%
- Others	66.0%	11.8%	2.2%	0.0%	6.6%	13.4%
Spanish Mainland	54.3%	10.6%	1.9%	0.0%	18.1%	15.2%
TOTAL	65.2%	18.5%	2.3%	0.0%	5.8%	8.2%

January - September 2024

	Hotels and similar	Apartments	Property	Cruise	House of friend or relative	Others
International	66.5%	19.6%	2.5%	2.4%	3.5%	5.5%
- Germany	68.7%	11.0%	3.4%	9.0%	3.4%	4.6%
- Netherlands	68.4%	24.3%	1.3%	0.6%	1.9%	3.5%
- Ireland	56.3%	33.7%	1.9%	0.4%	2.7%	5.1%
- Nordics	64.3%	27.3%	3.0%	0.1%	2.8%	2.4%
- United Kingdom	66.4%	23.3%	2.0%	1.9%	2.3%	4.1%
- Switzerland	68.3%	16.8%	2.9%	0.6%	5.6%	5.8%
- Others	67.5%	13.4%	2.9%	0.2%	6.2%	9.8%
Spanish Mainland	57.5%	10.2%	1.6%	0.0%	18.6%	12.1%
TOTAL	65.4%	18.5%	2.4%	2.1%	5.3%	6.3%

Source: Frontur (ISTAC). Tourist arrivals by air.

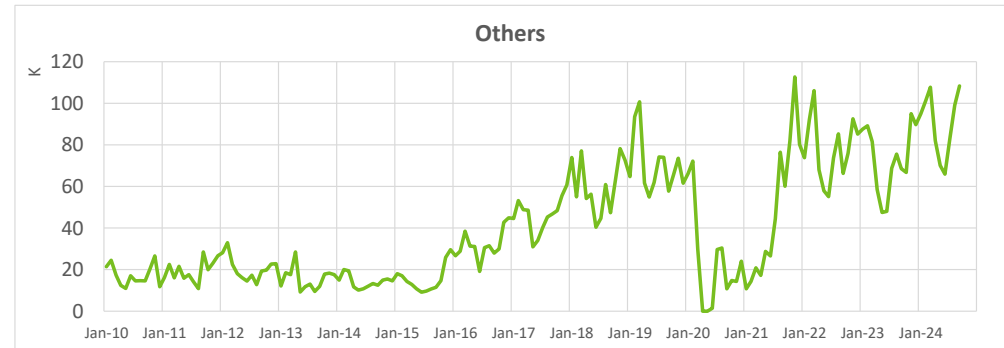
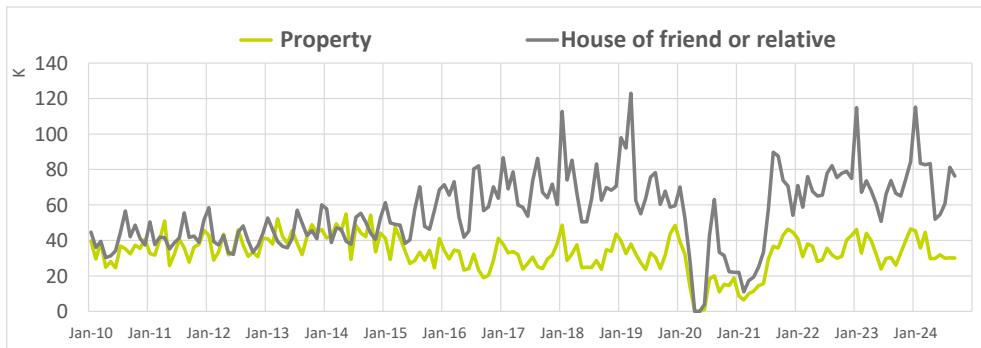
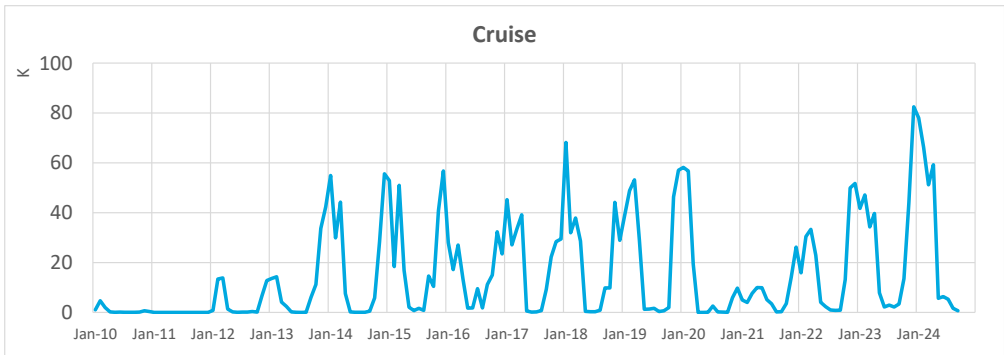
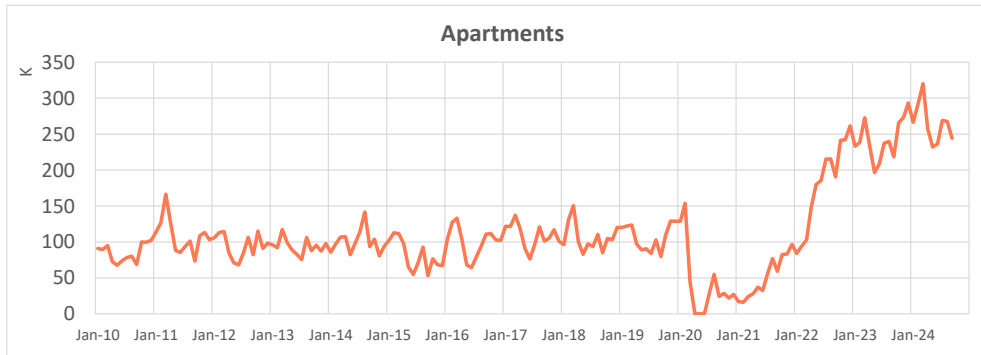
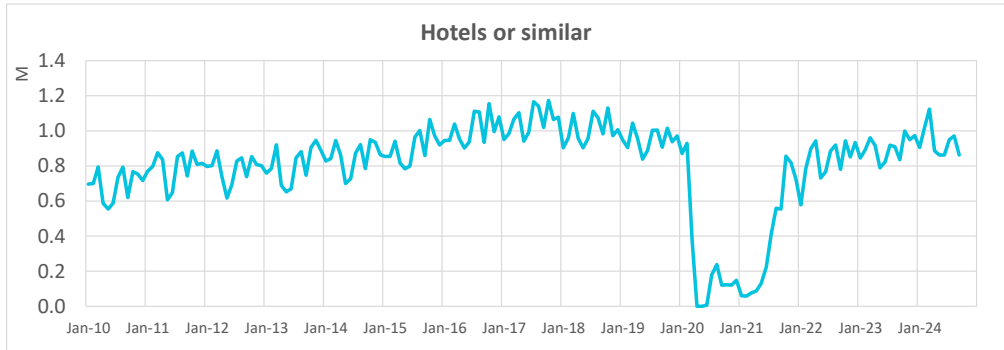
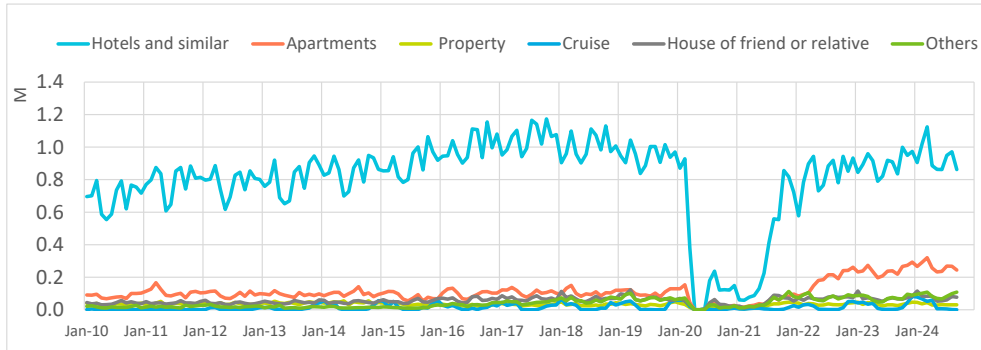
Note: on the result of the estimated Canary Islands total arrivals, tourists from La Gomera and El Hierro are included.

Tourist arrivals in the Canary Islands (ISTAC)

September 2024



Number of tourists by type of accommodation



Tourist arrivals in the Canary Islands (ISTAC)

September 2024



Number of tourists by holiday package booking and island of stay

September 2024

	Lanzarote	Fuerteventura	Gran Canaria	Tenerife	La Palma	CANARY ISLANDS	
Book	Total	160,294	126,382	172,548	206,334	3,903	668,242
	- International	151,119	123,398	162,388	191,269	3,145	630,093
	- Spanish Mainland	9,175	2,984	10,160	15,065	758	38,149
Do not book	Total	94,058	67,334	141,875	350,676	7,099	653,507
	- International	75,144	54,140	99,562	268,823	4,232	495,914
	- Spanish Mainland	18,914	13,194	42,313	81,853	2,867	157,593
TOTAL	All markets	254,352	193,716	314,422	557,009	11,002	1,321,749
	- International	226,263	177,538	261,949	460,091	7,377	1,126,007
	- Spanish Mainland	28,089	16,178	52,473	96,918	3,625	195,742
% book package	Total	63.0%	65.2%	54.9%	37.0%	35.5%	50.6%
	- International	66.8%	69.5%	62.0%	41.6%	42.6%	56.0%
	- Spanish Mainland	32.7%	18.4%	19.4%	15.5%	20.9%	19.5%

January - September 2024

	Lanzarote	Fuerteventura	Gran Canaria	Tenerife	La Palma	CANARY ISLANDS	
Book	Total	1,448,201	1,222,563	1,786,432	2,237,992	70,081	6,473,599
	- International	1,387,930	1,188,698	1,713,207	2,076,649	66,151	6,144,013
	- Spanish Mainland	60,271	33,865	73,225	161,343	3,930	329,586
Do not book	Total	1,039,112	694,034	1,558,394	3,144,454	100,596	6,437,798
	- International	877,463	581,660	1,195,626	2,561,196	70,627	5,208,565
	- Spanish Mainland	161,649	112,374	362,768	583,258	29,969	1,229,233
TOTAL	All markets	2,487,313	1,916,596	3,344,822	5,382,443	170,678	12,911,395
	- International	2,265,393	1,770,357	2,908,831	4,637,844	136,778	11,352,575
	- Spanish Mainland	221,920	146,239	435,991	744,599	33,900	1,558,820
% book package	Total	58.2%	63.8%	53.4%	41.6%	41.1%	50.1%
	- International	61.3%	67.1%	58.9%	44.8%	48.4%	54.1%
	- Spanish Mainland	27.2%	23.2%	16.8%	21.7%	11.6%	21.1%

Share of tourists by accommodation type and island of stay

September 2024

	Lanzarote	Fuerteventura	Gran Canaria	Tenerife	La Palma	CANARY ISLANDS	
International	Hotels	60.2%	82.6%	69.4%	63.2%	48.4%	67.1%
	Apartments	27.6%	10.8%	21.2%	18.8%	19.4%	19.8%
	Property	1.7%	1.7%	2.4%	2.9%	0.5%	2.3%
	Cruise	0.2%	0.0%	0.0%	0.0%	0.9%	0.1%
	House of friend or relative	1.6%	3.3%	4.3%	4.4%	10.2%	3.6%
	Others	8.7%	1.7%	2.6%	10.8%	20.7%	7.0%
	Spanish Mainland	Hotels	60.7%	63.5%	55.7%	51.1%	46.3%
Apartments		12.4%	10.0%	10.8%	10.6%	7.4%	10.6%
Property		3.1%	3.2%	1.8%	1.2%	2.1%	1.9%
Cruise		0.0%	0.0%	0.0%	0.0%	0.0%	0.0%
House of friend or relative		14.1%	17.5%	25.7%	15.0%	29.0%	18.1%
Others		9.7%	5.7%	5.9%	22.0%	15.1%	15.2%
TOTAL		Hotels	60.3%	81.0%	67.2%	61.1%	47.7%
	Apartments	25.9%	10.7%	19.5%	17.4%	15.4%	18.5%
	Property	1.9%	1.8%	2.3%	2.6%	1.0%	2.3%
	Cruise	0.2%	0.0%	0.0%	0.0%	0.6%	0.0%
	House of friend or relative	2.9%	4.5%	7.9%	6.2%	16.4%	5.8%
	Others	8.8%	2.0%	3.2%	12.7%	18.9%	8.2%

January - September 2024

	Lanzarote	Fuerteventura	Gran Canaria	Tenerife	La Palma	CANARY ISLANDS	
International	Hotels	61.5%	77.1%	65.1%	62.5%	32.2%	66.5%
	Apartments	26.0%	10.5%	20.2%	18.7%	16.5%	19.6%
	Property	1.5%	1.9%	2.2%	3.2%	2.0%	2.5%
	Cruise	3.5%	4.4%	6.0%	3.9%	25.2%	2.4%
	House of friend or relative	1.8%	3.2%	4.2%	3.8%	6.8%	3.5%
	Others	5.7%	2.9%	2.3%	7.9%	17.3%	5.5%
	Spanish Mainland	Hotels	63.7%	64.5%	54.9%	57.0%	43.0%
Apartments		13.7%	11.7%	9.6%	9.6%	6.7%	10.2%
Property		1.1%	2.3%	1.8%	1.4%	2.7%	1.6%
Cruise		0.0%	0.0%	0.0%	0.0%	0.1%	0.0%
House of friend or relative		12.6%	15.0%	28.6%	14.9%	24.4%	18.6%
Others		8.9%	6.6%	5.0%	17.1%	23.2%	12.1%
TOTAL		Hotels	61.7%	76.1%	63.8%	61.7%	34.3%
	Apartments	24.9%	10.6%	18.8%	17.4%	14.6%	18.5%
	Property	1.5%	1.9%	2.1%	3.0%	2.2%	2.4%
	Cruise	3.2%	4.1%	5.3%	3.4%	20.2%	2.1%
	House of friend or relative	2.8%	4.1%	7.4%	5.4%	10.3%	5.3%
	Others	6.0%	3.2%	2.7%	9.2%	18.5%	6.3%

Source: Frontur (ISTAC). Tourist arrivals by air.

Note: in the islands are included tourists who have chosen the island as the main destination of their trip or as a secondary destination.