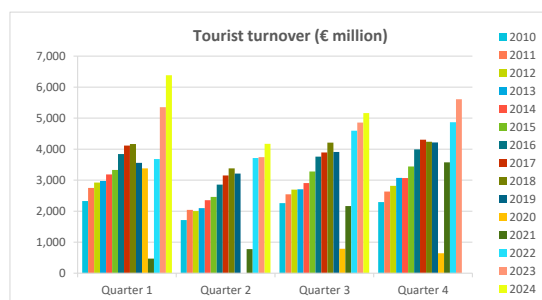


Tourist Expenditure Survey: Main indicators trend

Quarters (2010-2024)

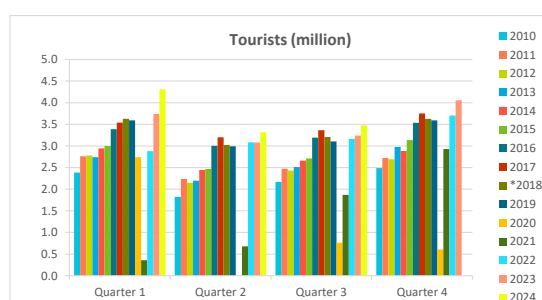
Tourist turnover (€ million)

	Quarter 1	Quarter 2	Quarter 3	Quarter 4	Annual
2010	2,328	1,712	2,261	2,296	8,597
2011	2,752	2,041	2,543	2,633	9,969
2012	2,922	2,002	2,697	2,819	10,440
2013	2,976	2,096	2,706	3,072	10,850
2014	3,186	2,354	2,907	3,068	11,515
2015	3,331	2,459	3,278	3,439	12,507
2016	3,843	2,857	3,759	3,991	14,450
2017	4,114	3,154	3,893	4,306	15,467
2018	4,166	3,380	4,211	4,238	15,994
2019	3,560	3,215	3,912	4,216	14,903
2020	3,381		787	642	4,809
2021	469	776	2,164	3,578	6,987
2022	3,684	3,716	4,593	4,870	16,863
2023	5,353	3,742	4,859	5,612	19,565
2024	6,385	4,170	5,164		



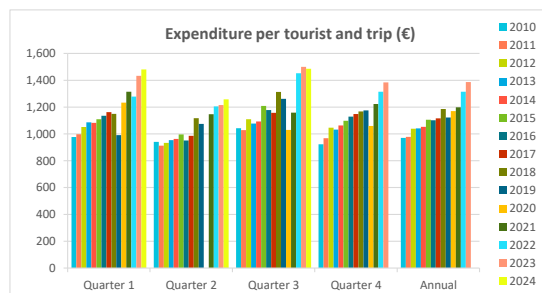
Tourists (million) ⁽¹⁾

	Quarter 1	Quarter 2	Quarter 3	Quarter 4	Annual
2010	2.38	1.82	2.17	2.49	8.86
2011	2.76	2.24	2.47	2.72	10.19
2012	2.78	2.15	2.43	2.69	10.05
2013	2.74	2.20	2.51	2.98	10.43
2014	2.94	2.45	2.66	2.88	10.93
2015	3.00	2.47	2.71	3.13	11.31
2016	3.39	3.00	3.19	3.54	13.11
2017	3.54	3.20	3.36	3.75	13.85
*2018	3.63	3.03	3.21	3.63	13.49
2019	3.59	2.99	3.10	3.59	13.28
2020	2.74		0.76	0.61	4.11
2021	0.36	0.68	1.87	2.93	5.83
2022	2.88	3.09	3.16	3.70	12.83
2023	3.74	3.08	3.24	4.05	14.11
2024	4.31	3.32	3.47		



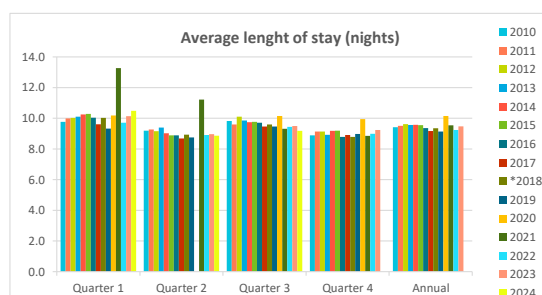
Expenditure per tourist and trip (€)

	Quarter 1	Quarter 2	Quarter 3	Quarter 4	Annual
2010	977	940	1,042	922	970
2011	997	913	1,029	968	978
2012	1,051	933	1,109	1,047	1,039
2013	1,086	954	1,077	1,032	1,041
2014	1,083	962	1,093	1,064	1,053
2015	1,110	996	1,209	1,097	1,105
2016	1,135	952	1,178	1,129	1,102
2017	1,162	986	1,157	1,148	1,117
2018	1,149	1,117	1,313	1,168	1,186
2019	991	1,074	1,261	1,175	1,123
2020	1,233		1,030	1,060	1,170
2021	1,315	1,147	1,158	1,223	1,199
2022	1,279	1,205	1,452	1,315	1,314
2023	1,432	1,215	1,500	1,385	1,387
2024	1,481	1,257	1,486		



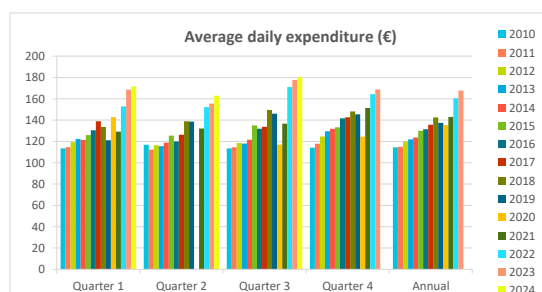
Average length of stay (nights) ⁽¹⁾

	Quarter 1	Quarter 2	Quarter 3	Quarter 4	Annual
2010	9.8	9.2	9.8	8.9	9.4
2011	10.0	9.3	9.6	9.1	9.5
2012	10.0	9.2	10.1	9.1	9.6
2013	10.1	9.4	9.9	8.9	9.6
2014	10.3	9.0	9.7	9.2	9.6
2015	10.3	8.9	9.8	9.2	9.6
2016	10.0	8.9	9.7	8.8	9.4
2017	9.6	8.7	9.5	8.9	9.2
*2018	10.0	8.9	9.6	8.8	9.3
2019	9.3	8.7	9.5	9.0	9.1
2020	10.2		10.1	9.9	10.1
2021	13.3	11.2	9.3	8.8	9.5
2022	9.7	8.9	9.4	9.0	9.2
2023	10.1	9.0	9.5	9.2	9.5
2024	10.5	8.9	9.2		



Average daily expenditure (€)

	Quarter 1	Quarter 2	Quarter 3	Quarter 4	Annual
2010	113.5	116.9	113.4	114.2	114.4
2011	114.7	112.3	114.5	117.9	115.0
2012	119.3	116.3	118.5	124.6	119.9
2013	122.2	115.6	118.1	129.5	121.9
2014	121.4	118.8	121.6	131.8	123.6
2015	126.0	125.5	135.0	133.2	130.1
2016	130.5	119.9	132.0	141.7	131.4
2017	138.9	126.2	133.7	142.7	135.7
2018	133.6	138.9	149.5	148.1	142.5
2019	121.0	138.6	146.1	145.5	137.4
2020	142.8		117.1	124.5	135.3
2021	129.2	132.1	136.7	151.3	143.1
2022	152.9	152.2	171.0	164.4	160.5
2023	168.5	155.4	177.6	168.7	167.8
2024	171.6	162.9	180.4		



(*) In 2010 and 2018 there were methodological changes in number of tourists and average length of stay (nights). (1) Tourists under 16 years old are excluded.
Source: ISTAC (Encuesta sobre el Gasto Turístico).