

# Tourist arrivals in the Canary Islands (ISTAC)

November 2024



## CANARY ISLANDS

	United Kingdom	Germany	Belgium	France	Netherlands	Ireland	Italy	Switzerland	Denmark	Finland	Norway	Sweden	Nordics	Others	International	Mainland	TOTAL
2023	465,832	276,807	41,340	65,441	55,889	71,565	64,707	16,434	32,833	40,455	59,989	54,907	188,184	102,391	1,348,589	127,375	1,475,964
2024	513,747	321,615	43,263	75,748	59,040	65,307	72,161	20,531	34,810	35,461	66,543	52,776	189,590	130,195	1,491,198	137,892	1,629,089
Change	47,915	44,808	1,923	10,307	3,151	-6,258	7,454	4,097	1,977	-4,994	6,554	-2,131	1,406	27,804	142,609	10,517	153,125
Change, %	10.3%	16.2%	4.7%	15.8%	5.6%	-8.7%	11.5%	24.9%	6.0%	-12.3%	10.9%	-3.9%	0.7%	27.2%	10.6%	8.3%	10.4%

## LANZAROTE

	United Kingdom	Germany	Belgium	France	Netherlands	Ireland	Italy	Switzerland	Denmark	Finland	Norway	Sweden	Nordics	Others	International	Mainland	TOTAL
2023	117,889	32,107	5,026	16,275	5,862	33,557	7,543	-	-	-	-	-	7,969	9,815	236,044	17,613	253,657
2024	137,736	32,509	4,767	19,254	8,337	28,287	7,481	-	-	-	-	-	9,403	10,409	258,184	22,917	281,100
Change	19,847	402	-259	2,979	2,475	-5,270	-62	--	--	--	--	--	1,434	594	22,140	5,304	27,443
Change, %	16.8%	1.3%	-5.2%	18.3%	42.2%	-15.7%	-0.8%	--	--	--	--	--	18.0%	6.1%	9.4%	30.1%	10.8%

## FUERTEVENTURA

	United Kingdom	Germany	Belgium	France	Netherlands	Ireland	Italy	Switzerland	Denmark	Finland	Norway	Sweden	Nordics	Others	International	Mainland	TOTAL
2023	61,801	70,555	2,746	8,597	5,647	5,875	11,251	-	-	-	-	-	8,112	18,007	192,591	11,489	204,080
2024	70,842	76,213	2,516	10,537	6,399	5,839	12,794	-	-	-	-	-	8,865	21,136	215,142	12,007	227,149
Change	9,041	5,658	-230	1,940	752	-36	1,543	--	--	--	--	--	753	3,129	22,551	518	23,069
Change, %	14.6%	8.0%	-8.4%	22.6%	13.3%	-0.6%	13.7%	--	--	--	--	--	9.3%	17.4%	11.7%	4.5%	11.3%

## GRAN CANARIA

	United Kingdom	Germany	Belgium	France	Netherlands	Ireland	Italy	Switzerland	Denmark	Finland	Norway	Sweden	Nordics	Others	International	Mainland	TOTAL
2023	69,047	78,405	9,316	11,811	21,134	9,416	13,532	-	-	-	-	-	122,553	35,333	370,546	37,558	408,104
2024	71,175	103,341	10,096	12,975	23,467	9,904	11,921	-	-	-	-	-	122,739	44,503	410,120	35,767	445,886
Change	2,128	24,936	780	1,164	2,333	488	-1,611	--	--	--	--	--	186	9,170	39,574	-1,791	37,782
Change, %	3.1%	31.8%	8.4%	9.9%	11.0%	5.2%	-11.9%	--	--	--	--	--	0.2%	26.0%	10.7%	-4.8%	9.3%

## TENERIFE

	United Kingdom	Germany	Belgium	France	Netherlands	Ireland	Italy	Switzerland	Denmark	Finland	Norway	Sweden	Nordics	Others	International	Mainland	TOTAL
2023	215,391	84,841	23,935	28,405	22,386	22,717	32,291	-	-	-	-	-	48,929	54,405	533,300	54,732	588,032
2024	232,643	97,858	25,290	32,292	19,749	21,276	39,874	-	-	-	-	-	48,002	73,184	590,168	62,632	652,800
Change	17,252	13,017	1,355	3,887	-2,637	-1,441	7,583	--	--	--	--	--	-927	18,779	56,868	7,900	64,768
Change, %	8.0%	15.3%	5.7%	13.7%	-11.8%	-6.3%	23.5%	--	--	--	--	--	-1.9%	34.5%	10.7%	14.4%	11.0%

## LA PALMA

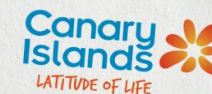
	United Kingdom	Germany	Belgium	France	Netherlands	Ireland	Italy	Switzerland	Denmark	Finland	Norway	Sweden	Nordics	Others	International	Mainland	TOTAL
2023	1,561	8,719	125	199	663	0	90	-	-	-	-	-	474	1,140	12,971	4,570	17,541
2024	1,235	10,469	503	618	1,071	0	31	-	-	-	-	-	517	1,345	15,789	3,041	18,831
Change	-326	1,750	378	419	408	0	-59	--	--	--	--	--	43	205	2,818	-1,529	1,290
Change, %	-20.9%	20.1%	302.4%	210.6%	61.5%	--	-65.6%	--	--	--	--	--	9.1%	18.0%	21.7%	-33.5%	7.4%

Source: Frontur (ISTAC). Tourist arrivals by air.

Note: on the result of the estimated Canary Islands total arrivals, tourists from La Gomera and El Hierro are included. Only main tourists are taken into account in each island.

# Tourist arrivals in the Canary Islands (ISTAC)

January - November 2024



## CANARY ISLANDS

	United Kingdom	Germany	Belgium	France	Netherlands	Ireland	Italy	Switzerland	Denmark	Finland	Norway	Sweden	Nordics	Others	International	Mainland	TOTAL
2023	5,096,525	2,262,289	387,557	764,150	598,342	666,936	588,126	175,525	264,749	172,113	350,199	317,375	1,104,436	1,179,500	12,823,380	1,817,917	14,641,298
2024	5,659,189	2,501,983	433,720	840,945	676,818	736,221	696,913	175,214	257,480	158,972	393,681	319,689	1,129,822	1,389,068	14,239,890	1,853,683	16,093,572
Change	562,664	239,694	46,163	76,795	78,476	69,285	108,787	-311	-7,269	-13,141	43,482	2,314	25,386	209,568	1,416,510	35,766	1,452,274
Change, %	11.0%	10.6%	11.9%	10.0%	13.1%	10.4%	18.5%	-0.2%	-2.7%	-7.6%	12.4%	0.7%	2.3%	17.8%	11.0%	2.0%	9.9%

## LANZAROTE

	United Kingdom	Germany	Belgium	France	Netherlands	Ireland	Italy	Switzerland	Denmark	Finland	Norway	Sweden	Nordics	Others	International	Mainland	TOTAL
2023	1,361,683	224,566	53,989	197,580	71,650	323,407	88,084	-	-	-	-	-	56,030	98,717	2,475,701	297,662	2,773,361
2024	1,525,633	238,747	60,330	212,689	84,369	330,785	70,181	-	-	-	-	-	51,469	114,894	2,689,097	264,993	2,954,087
Change	163,950	14,181	6,341	15,109	12,719	7,378	-17,903	--	--	--	--	--	-4,561	16,177	213,396	-32,669	180,726
Change, %	12.0%	6.3%	11.7%	7.6%	17.8%	2.3%	-20.3%	--	--	--	--	--	-8.1%	16.4%	8.6%	-11.0%	6.5%

## FUERTEVENTURA

	United Kingdom	Germany	Belgium	France	Netherlands	Ireland	Italy	Switzerland	Denmark	Finland	Norway	Sweden	Nordics	Others	International	Mainland	TOTAL
2023	635,827	647,666	20,184	121,806	56,285	57,139	107,209	-	-	-	-	-	56,673	205,027	1,907,815	158,913	2,066,727
2024	705,363	699,173	24,208	121,256	65,402	63,303	128,716	-	-	-	-	-	59,488	232,059	2,098,971	165,965	2,264,936
Change	69,536	51,507	4,024	-550	9,117	6,164	21,507	--	--	--	--	--	2,815	27,032	191,156	7,052	198,209
Change, %	10.9%	8.0%	19.9%	-0.5%	16.2%	10.8%	20.1%	--	--	--	--	--	5.0%	13.2%	10.0%	4.4%	9.6%

## GRAN CANARIA

	United Kingdom	Germany	Belgium	France	Netherlands	Ireland	Italy	Switzerland	Denmark	Finland	Norway	Sweden	Nordics	Others	International	Mainland	TOTAL
2023	827,459	699,854	97,214	142,514	248,848	99,135	111,799	-	-	-	-	-	703,771	377,320	3,307,915	485,304	3,793,219
2024	921,558	762,798	110,162	151,600	286,753	112,518	120,329	-	-	-	-	-	733,266	417,577	3,616,557	507,966	4,124,522
Change	94,099	62,944	12,948	9,086	37,905	13,383	8,530	--	--	--	--	--	29,495	40,257	308,642	22,662	331,303
Change, %	11.4%	9.0%	13.3%	6.4%	15.2%	13.5%	7.6%	--	--	--	--	--	4.2%	10.7%	9.3%	4.7%	8.7%

## TENERIFE

	United Kingdom	Germany	Belgium	France	Netherlands	Ireland	Italy	Switzerland	Denmark	Finland	Norway	Sweden	Nordics	Others	International	Mainland	TOTAL
2023	2,254,320	633,172	211,678	296,870	213,835	186,656	279,469	-	-	-	-	-	280,567	654,028	5,010,589	817,149	5,827,736
2024	2,490,957	723,016	235,271	349,286	226,979	229,307	375,663	-	-	-	-	-	279,055	782,717	5,692,245	866,114	6,558,358
Change	236,637	89,844	23,593	52,416	13,144	42,651	96,194	--	--	--	--	--	-1,512	128,689	681,656	48,965	730,622
Change, %	10.5%	14.2%	11.1%	17.7%	6.1%	22.9%	34.4%	--	--	--	--	--	-0.5%	19.7%	13.6%	6.0%	12.5%

## LA PALMA

	United Kingdom	Germany	Belgium	France	Netherlands	Ireland	Italy	Switzerland	Denmark	Finland	Norway	Sweden	Nordics	Others	International	Mainland	TOTAL
2023	11,526	37,411	3,070	3,027	6,874	264	1,112	-	-	-	-	-	5,216	15,446	83,945	46,317	130,264
2024	11,463	62,885	2,882	4,782	12,839	118	1,499	-	-	-	-	-	5,001	14,448	115,917	37,261	153,178
Change	-63	25,474	-188	1,755	5,965	-146	387	--	--	--	--	--	-215	-998	31,972	-9,056	22,914
Change, %	-0.5%	68.1%	-6.1%	58.0%	86.8%	-55.3%	34.8%	--	--	--	--	--	-4.1%	-6.5%	38.1%	-19.6%	17.6%

Source: Frontur (ISTAC). Tourist arrivals by air.

Note: on the result of the estimated Canary Islands total arrivals, tourists from La Gomera and El Hierro are included. Only main tourists are taken into account in each island.

# International tourist arrivals in Spain (INE)

November 2024



## BY COUNTRY OF RESIDENCE

### Monthly

	UK	Germany	Belgium	France	Netherlands	Ireland	Italy	Switzerland	Denmark	Finland	Norway	Sweden	Nordics	Russia	Portugal	Austria	Others	INTERNATIONAL
Nov-23	949,322	623,346	186,593	639,773	229,622	145,107	302,456	106,121	74,677	73,765	100,483	156,210	405,135	0	145,035	52,202	1,350,786	5,135,498
Nov-24	1,001,320	650,733	147,846	751,182	244,489	148,779	369,097	99,358	92,239	63,418	105,483	141,229	402,369	0	176,078	77,332	1,596,621	5,665,204
Change	51,998	27,387	-38,747	111,409	14,867	3,672	66,641	-6,763	17,562	-10,347	5,000	-14,981	-2,766	--	31,043	25,130	245,835	529,706
Change, %	5.5%	4.4%	-20.8%	17.4%	6.5%	2.5%	22.0%	-6.4%	23.5%	-14.0%	5.0%	-9.6%	-0.7%	--	21.4%	48.1%	18.2%	10.3%

### Year-to-date

	UK	Germany	Belgium	France	Netherlands	Ireland	Italy	Switzerland	Denmark	Finland	Norway	Sweden	Nordics	Russia	Portugal	Austria	Others	INTERNATIONAL
Jan-Nov 23	16,349,723	10,428,301	2,588,506	10,949,297	4,115,083	2,351,573	4,496,522	1,888,545	1,104,955	528,444	1,264,548	1,554,773	4,452,720	0	2,567,942	1,197,420	18,574,331	79,959,963
Jan-Nov 24	17,502,412	11,312,082	2,892,637	12,204,995	4,553,384	2,628,536	5,061,832	2,013,163	1,177,231	552,092	1,350,182	1,711,480	4,790,985	--	2,761,150	1,171,341	21,641,043	88,533,560
Change	1,152,689	883,781	304,131	1,255,698	438,301	276,963	565,310	124,618	72,276	23,648	85,634	156,707	338,265	--	193,208	-26,079	3,066,712	8,573,597
Change, %	7.1%	8.5%	11.7%	11.5%	10.7%	11.8%	12.6%	6.6%	6.5%	4.5%	6.8%	10.1%	7.6%	--	7.5%	-2.2%	16.5%	10.7%

## BY AUTONOMOUS COMMUNITY

### Monthly

	Canary Islands	Andalusia	Aragon	Asturias	Canary Islands	Cantabria	C. y Leon	C. La Mancha	Catalonia	Canarian Region	Extremadura	Galicia	Madrid	Murcia	Navarre	Basque Country	La Rioja	SPAIN
Nov-23	1,332,768	715,475	25,352	0	213,740	8,653	58,486	0	1,145,608	653,407	0	77,064	673,552	59,130	30,460	96,324	0	5,135,498
Nov-24	1,447,566	777,538	33,505	0	219,713	18,458	90,712	0	1,256,642	680,693	0	108,397	718,300	70,815	0	143,218	0	5,665,204
Change	114,798	62,063	8,153	0	5,973	9,805	32,226	0	111,034	27,286	0	31,333	44,748	11,685	-30,460	46,894	0	529,706
Change, %	8.6%	8.7%	32.2%	--	2.8%	113.3%	55.1%	--	9.7%	4.2%	--	40.7%	6.6%	19.8%	-100.0%	48.7%	--	10.3%

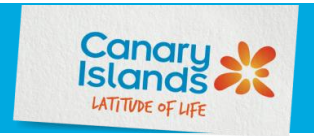
### Year-to-date

	Canary Islands	Andalusia	Aragon	Asturias	Canary Islands	Cantabria	C. y Leon	C. La Mancha	Catalonia	Canarian Region	Extremadura	Galicia	Madrid	Murcia	Navarre	Basque Country	La Rioja	SPAIN
Jan-Nov 23	12,576,576	11,565,631	388,792	330,373	14,258,924	404,129	1,120,635	136,501	17,162,517	9,761,620	158,575	1,432,039	7,240,258	904,296	272,463	1,821,711	10,759	79,959,963
Jan-Nov 24	13,778,657	12,917,293	454,055	253,599	15,129,124	461,089	1,260,463	135,491	18,866,490	11,270,842	59,199	1,682,199	8,220,730	1,083,510	298,377	2,047,264	13,942	88,533,560
Change	1,202,081	1,351,662	65,263	-76,774	870,200	56,960	139,828	-1,010	1,703,973	1,509,222	-99,376	250,160	980,472	179,214	25,914	225,553	3,183	8,573,597
Change, %	9.6%	11.7%	16.8%	-23.2%	6.1%	14.1%	12.5%	-0.7%	9.9%	15.5%	-62.7%	17.5%	13.5%	19.8%	9.5%	12.4%	29.6%	10.7%

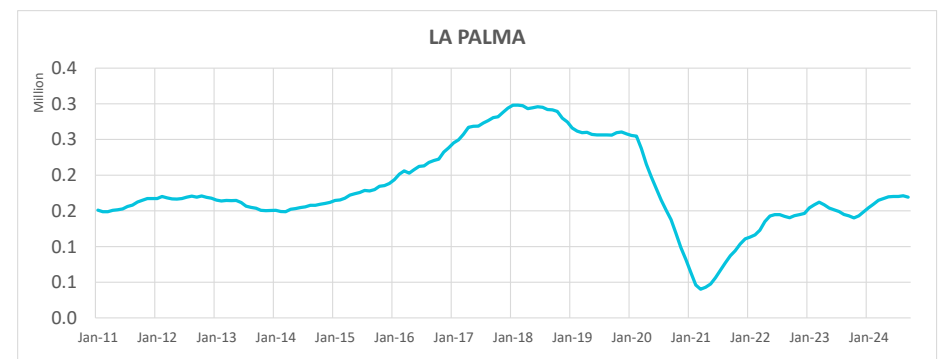
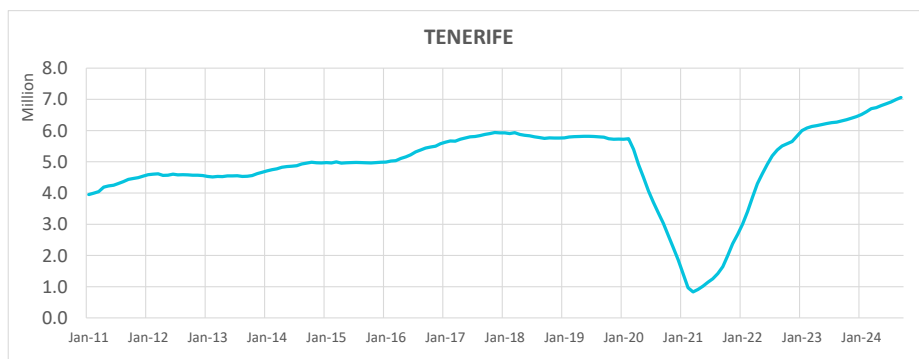
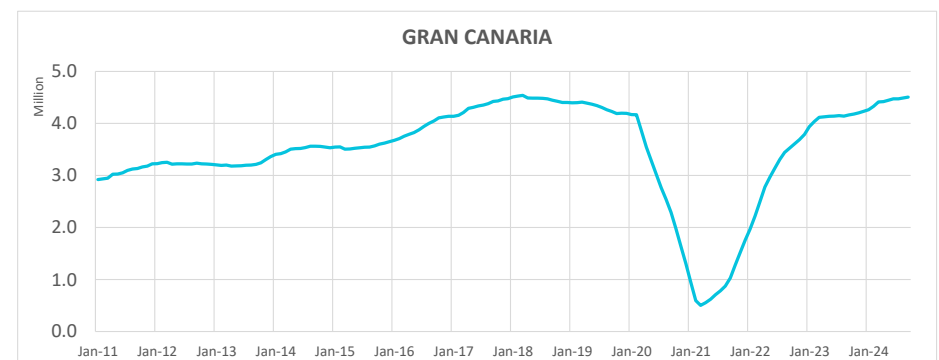
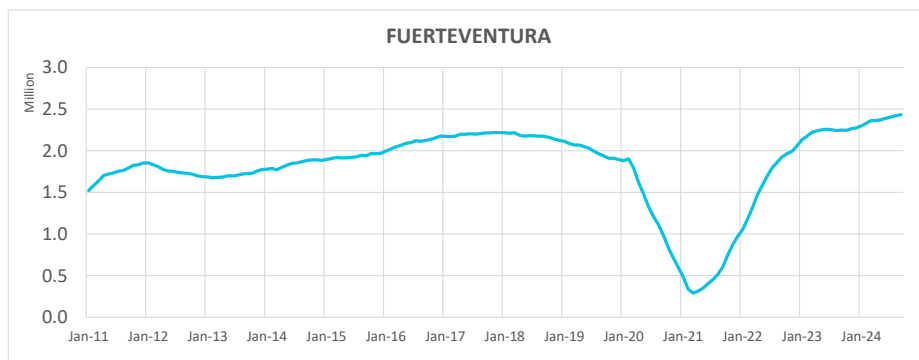
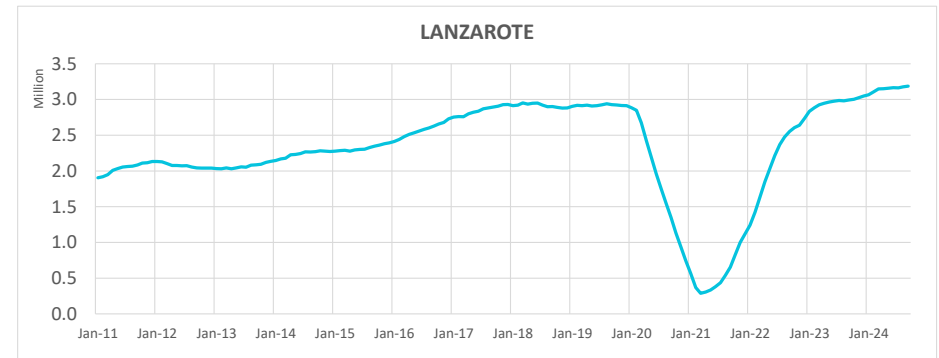
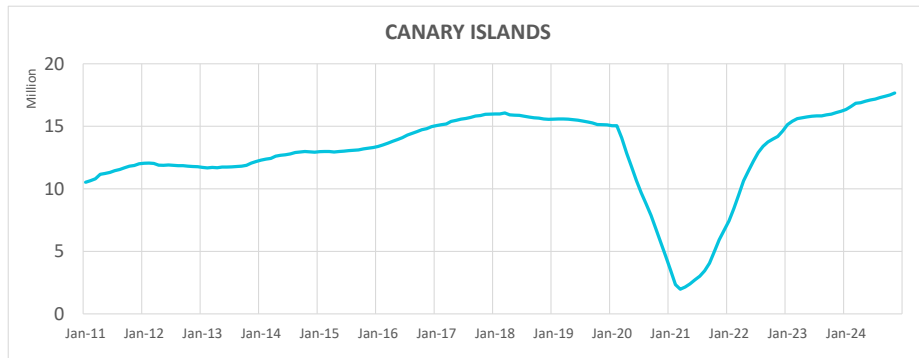
Note: Since March 2022, "Russia" is included in Others. Source: Frontur (INE).

# Tourist arrivals in the Canary Islands (ISTAC)

November 2024



## Tourist arrivals in the Canary Islands (12-month moving sum)

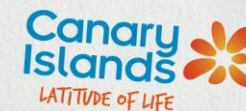


Source: Frontur (ISTAC). Tourist arrivals by air.

Note: on the result of the estimated Canary Islands total arrivals, tourists from La Gomera and El Hierro are included. Only main tourists are taken into account in each island.

# Tourist arrivals in the Canary Islands (ISTAC)

November 2024



## Number of tourists by holiday package booking and country of residence

### November 2024

	Book	Do not book	TOTAL	% Book	% Do not book
<b>International</b>	774,849	716,348	1,491,198	52.0%	48.0%
- Germany	224,677	96,938	321,615	69.9%	30.1%
- Netherlands	34,113	24,927	59,040	57.8%	42.2%
- Ireland	14,577	50,730	65,307	22.3%	77.7%
- Nordics	114,598	74,992	189,590	60.4%	39.6%
- United Kingdom	291,013	222,734	513,747	56.6%	43.4%
- Switzerland	8,382	12,148	20,531	40.8%	59.2%
- Others	87,489	233,879	321,368	27.2%	72.8%
<b>Spanish Mainland</b>	21,391	116,501	137,892	15.5%	84.5%
<b>TOTAL</b>	796,240	832,849	1,629,090	48.9%	51.1%

### January - November 2024

	Book	Do not book	TOTAL	% Book	% Do not book
<b>International</b>	7,732,129	6,507,768	14,239,894	54.3%	45.7%
- Germany	1,653,870	848,114	2,501,983	66.1%	33.9%
- Netherlands	447,541	229,279	676,818	66.1%	33.9%
- Ireland	261,972	474,249	736,221	35.6%	64.4%
- Nordics	702,512	427,312	1,129,824	62.2%	37.8%
- United Kingdom	3,389,605	2,269,584	5,659,189	59.9%	40.1%
- Switzerland	64,516	110,698	175,214	36.8%	63.2%
- Others	1,212,113	2,148,532	3,360,645	36.1%	63.9%
<b>Spanish Mainland</b>	385,520	1,468,162	1,853,683	20.8%	79.2%
<b>TOTAL</b>	8,117,649	7,975,930	16,093,577	50.4%	49.6%

## Share of tourists by accommodation type and country of residence

### November 2024

	Hotels and similar	Apartments	Property	Cruise	House of friend or relative	Others
<b>International</b>	59.6%	19.3%	2.7%	6.9%	4.1%	7.4%
- Germany	60.0%	10.8%	3.1%	18.2%	2.6%	5.3%
- Netherlands	66.6%	24.4%	1.8%	0.2%	3.0%	3.9%
- Ireland	51.2%	31.9%	3.9%	0.3%	3.8%	8.9%
- Nordics	62.1%	30.1%	2.6%	0.2%	1.9%	3.1%
- United Kingdom	60.3%	22.0%	2.0%	7.5%	3.5%	4.7%
- Switzerland	72.5%	10.8%	3.6%	2.4%	4.2%	6.6%
- Others	55.9%	14.3%	3.5%	1.4%	8.1%	16.8%
<b>Spanish Mainland</b>	59.2%	7.4%	1.5%	0.3%	16.8%	14.9%
<b>TOTAL</b>	59.5%	18.3%	2.6%	6.3%	5.2%	8.1%

### January - November 2024

	Hotels and similar	Apartments	Property	Cruise	House of friend or relative	Others
<b>International</b>	65.9%	19.7%	2.5%	2.7%	3.6%	5.7%
- Germany	68.0%	11.2%	3.3%	9.4%	3.4%	4.7%
- Netherlands	68.4%	24.5%	1.4%	0.5%	1.9%	3.3%
- Ireland	55.6%	33.6%	2.2%	0.3%	2.7%	5.6%
- Nordics	63.8%	28.2%	2.9%	0.1%	2.6%	2.4%
- United Kingdom	66.0%	23.1%	2.0%	2.2%	2.4%	4.2%
- Switzerland	70.0%	15.4%	2.9%	0.7%	5.1%	5.8%
- Others	66.3%	13.4%	2.9%	0.3%	6.4%	10.6%
<b>Spanish Mainland</b>	58.1%	9.9%	1.6%	0.0%	18.2%	12.2%
<b>TOTAL</b>	65.0%	18.5%	2.4%	2.4%	5.3%	6.4%

Source: Frontur (ISTAC). Tourist arrivals by air.

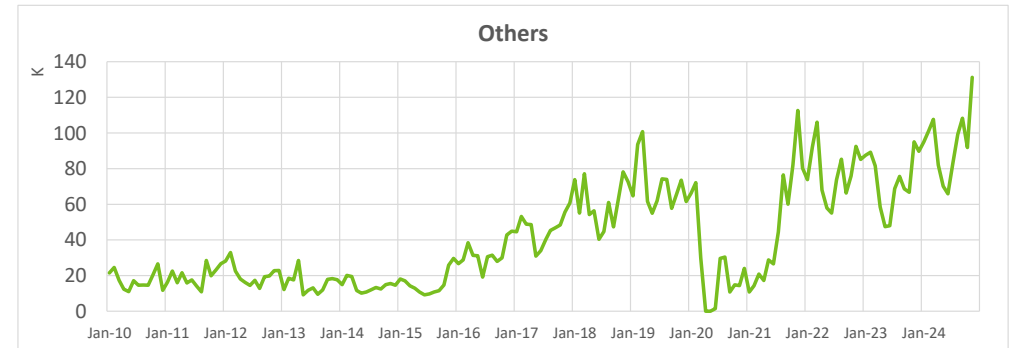
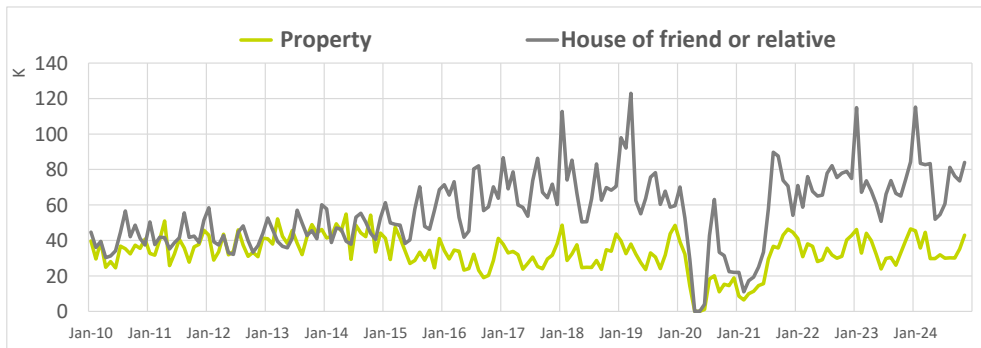
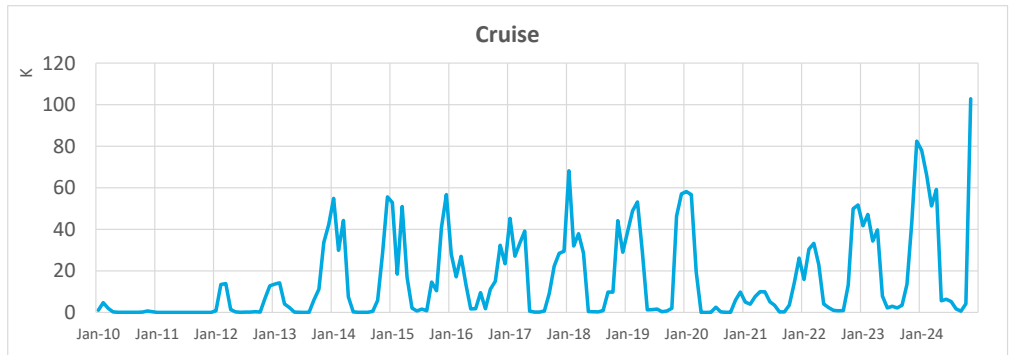
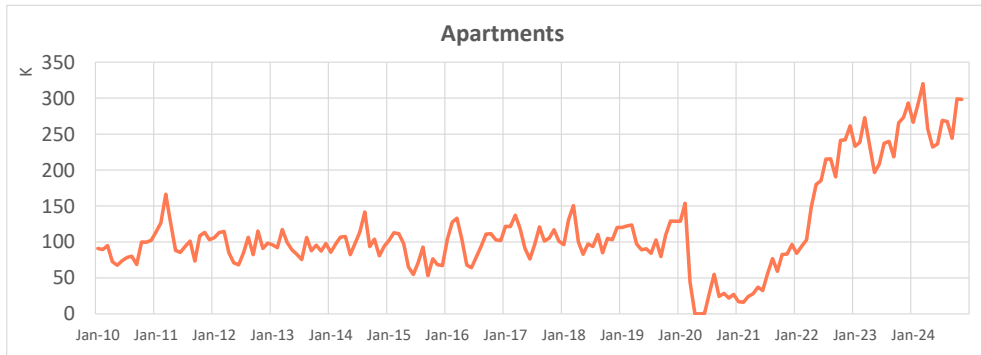
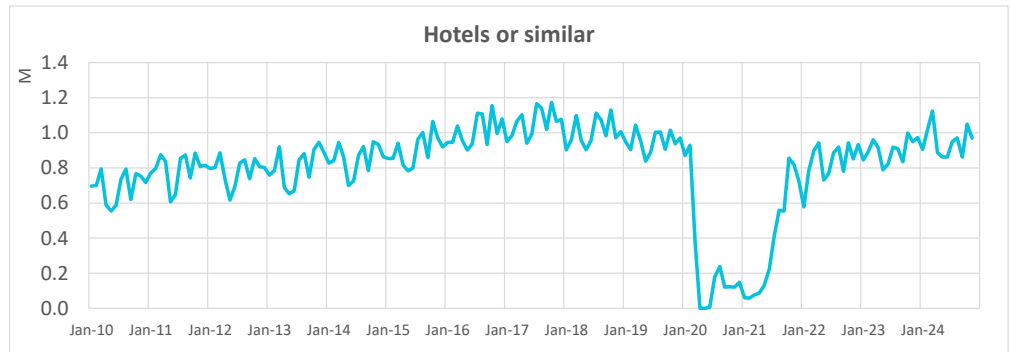
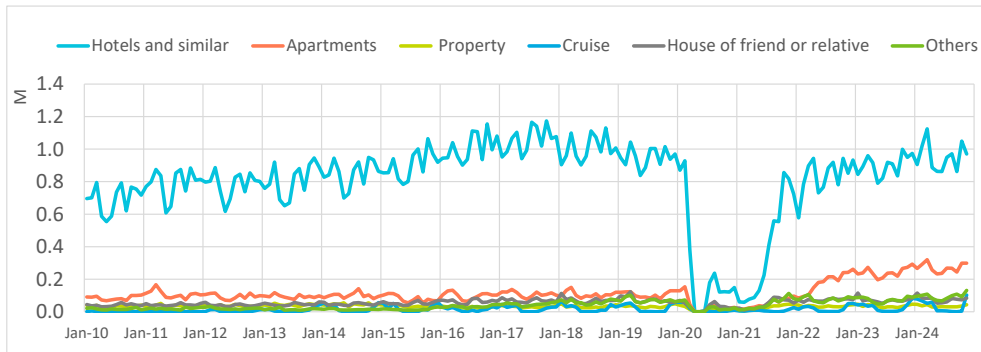
Note: on the result of the estimated Canary Islands total arrivals, tourists from La Gomera and El Hierro are included.

# Tourist arrivals in the Canary Islands (ISTAC)

November 2024

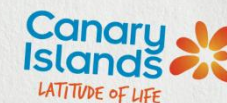


## Number of tourists by type of accommodation



# Tourist arrivals in the Canary Islands (ISTAC)

November 2024



## Number of tourists by holiday package booking and island of stay

November 2024

	Lanzarote	Fuerteventura	Gran Canaria	Tenerife	La Palma	CANARY ISLANDS	
<b>Book</b>	<b>Total</b>	<b>162,550</b>	<b>148,355</b>	<b>262,472</b>	<b>268,356</b>	<b>14,651</b>	<b>796,240</b>
	- International	159,224	146,408	259,467	255,481	14,339	<b>774,849</b>
	- Spanish Mainland	3,326	1,947	3,005	12,875	312	<b>21,391</b>
<b>Do not book</b>	<b>Total</b>	<b>136,952</b>	<b>97,799</b>	<b>196,491</b>	<b>401,689</b>	<b>13,311</b>	<b>832,849</b>
	- International	116,539	87,413	162,743	350,389	10,458	<b>716,348</b>
	- Spanish Mainland	20,413	10,386	33,748	51,300	2,853	<b>116,501</b>
<b>TOTAL</b>	<b>All markets</b>	<b>299,502</b>	<b>246,155</b>	<b>458,963</b>	<b>670,045</b>	<b>27,961</b>	<b>1,629,090</b>
	- International	275,763	233,822	422,210	605,870	24,797	<b>1,491,198</b>
	- Spanish Mainland	23,739	12,333	36,753	64,175	3,164	<b>137,892</b>
<b>% book package</b>	<b>Total</b>	<b>54.3%</b>	<b>60.3%</b>	<b>57.2%</b>	<b>40.1%</b>	<b>52.4%</b>	<b>48.9%</b>
	- International	57.7%	62.6%	61.5%	42.2%	57.8%	<b>52.0%</b>
	- Spanish Mainland	14.0%	15.8%	8.2%	20.1%	9.9%	<b>15.5%</b>

January - November 2024

	Lanzarote	Fuerteventura	Gran Canaria	Tenerife	La Palma	CANARY ISLANDS	
<b>Book</b>	<b>Total</b>	<b>1,786,293</b>	<b>1,515,779</b>	<b>2,281,859</b>	<b>2,800,402</b>	<b>88,565</b>	<b>8,117,649</b>
	- International	1,717,743	1,477,865	2,195,842	2,608,846	83,849	<b>7,732,129</b>
	- Spanish Mainland	68,550	37,914	86,017	191,556	4,716	<b>385,520</b>
<b>Do not book</b>	<b>Total</b>	<b>1,293,791</b>	<b>869,057</b>	<b>1,935,383</b>	<b>3,878,708</b>	<b>123,001</b>	<b>7,975,930</b>
	- International	1,090,421	735,964	1,504,861	3,188,017	88,092	<b>6,507,768</b>
	- Spanish Mainland	203,370	133,093	430,522	690,691	34,909	<b>1,468,162</b>
<b>TOTAL</b>	<b>All markets</b>	<b>3,080,084</b>	<b>2,384,836</b>	<b>4,217,238</b>	<b>6,679,107</b>	<b>211,567</b>	<b>16,093,577</b>
	- International	2,808,164	2,213,829	3,700,701	5,796,862	171,941	<b>14,239,894</b>
	- Spanish Mainland	271,920	171,007	516,537	882,245	39,626	<b>1,853,683</b>
<b>% book package</b>	<b>Total</b>	<b>58.0%</b>	<b>63.6%</b>	<b>54.1%</b>	<b>41.9%</b>	<b>41.9%</b>	<b>50.4%</b>
	- International	61.2%	66.8%	59.3%	45.0%	48.8%	<b>54.3%</b>
	- Spanish Mainland	25.2%	22.2%	16.7%	21.7%	11.9%	<b>20.8%</b>

## Share of tourists by accommodation type and island of stay

November 2024

	Lanzarote	Fuerteventura	Gran Canaria	Tenerife	La Palma	CANARY ISLANDS	
<b>International</b>	Hotels	56.3%	72.3%	58.1%	53.7%	33.5%	<b>59.6%</b>
	Apartments	25.2%	11.9%	20.8%	16.8%	16.9%	<b>19.3%</b>
	Property	2.0%	2.3%	2.8%	2.9%	1.8%	<b>2.7%</b>
	Cruise	6.1%	6.9%	11.0%	10.7%	27.4%	<b>6.9%</b>
	House of friend or relative	2.0%	5.1%	4.1%	4.2%	5.4%	<b>4.1%</b>
	Others	8.4%	1.4%	3.2%	11.7%	15.0%	<b>7.4%</b>
	<b>Spanish Mainland</b>	Hotels	56.2%	55.5%	60.5%	62.4%	48.8%
Apartments		10.0%	9.1%	6.2%	6.9%	6.9%	<b>7.4%</b>
Property		2.5%	4.3%	1.1%	0.8%	1.9%	<b>1.5%</b>
Cruise		0.0%	0.0%	0.5%	0.3%	0.0%	<b>0.3%</b>
House of friend or relative		12.8%	27.9%	22.7%	12.2%	19.9%	<b>16.8%</b>
Others		18.5%	3.2%	8.9%	17.3%	22.5%	<b>14.9%</b>
<b>TOTAL</b>		Hotels	56.3%	71.5%	58.3%	54.6%	35.3%
	Apartments	24.0%	11.8%	19.6%	15.9%	15.8%	<b>18.3%</b>
	Property	2.0%	2.4%	2.7%	2.7%	1.8%	<b>2.6%</b>
	Cruise	5.6%	6.6%	10.1%	9.7%	24.3%	<b>6.3%</b>
	House of friend or relative	2.9%	6.2%	5.6%	4.9%	7.0%	<b>5.2%</b>
	Others	9.2%	1.5%	3.7%	12.2%	15.8%	<b>8.1%</b>

January - November 2024

	Lanzarote	Fuerteventura	Gran Canaria	Tenerife	La Palma	CANARY ISLANDS	
<b>International</b>	Hotels	61.1%	76.8%	64.5%	61.9%	32.8%	<b>65.9%</b>
	Apartments	25.9%	10.8%	20.6%	18.5%	17.4%	<b>19.7%</b>
	Property	1.6%	1.9%	2.3%	3.1%	2.0%	<b>2.5%</b>
	Cruise	3.5%	4.3%	6.0%	4.3%	24.0%	<b>2.7%</b>
	House of friend or relative	1.8%	3.5%	4.1%	3.9%	6.6%	<b>3.6%</b>
	Others	6.1%	2.6%	2.5%	8.3%	17.1%	<b>5.7%</b>
	<b>Spanish Mainland</b>	Hotels	62.9%	64.1%	56.3%	57.9%	44.6%
Apartments		13.0%	11.4%	9.2%	9.4%	6.8%	<b>9.9%</b>
Property		1.2%	2.5%	1.7%	1.3%	2.4%	<b>1.6%</b>
Cruise		0.0%	0.0%	0.1%	0.0%	0.1%	<b>0.0%</b>
House of friend or relative		12.4%	15.9%	27.6%	14.6%	23.9%	<b>18.2%</b>
Others		10.5%	6.1%	5.1%	16.8%	22.2%	<b>12.2%</b>
<b>TOTAL</b>		Hotels	61.2%	75.9%	63.5%	61.4%	35.0%
	Apartments	24.7%	10.8%	19.2%	17.3%	15.4%	<b>18.5%</b>
	Property	1.6%	2.0%	2.2%	2.9%	2.1%	<b>2.4%</b>
	Cruise	3.2%	4.0%	5.3%	3.7%	19.5%	<b>2.4%</b>
	House of friend or relative	2.8%	4.4%	7.0%	5.3%	9.9%	<b>5.3%</b>
	Others	6.5%	2.9%	2.8%	9.4%	18.1%	<b>6.4%</b>

Source: Frontur (ISTAC). Tourist arrivals by air.

Note: in the islands are included tourists who have chosen the island as the main destination of their trip or as a secondary destination.