

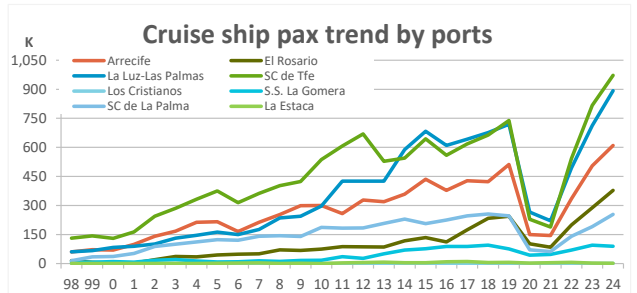
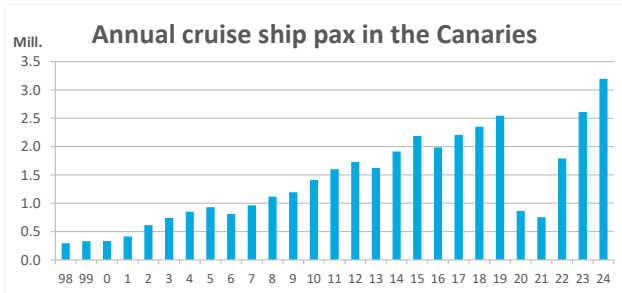
Cruise ship passenger arrivals

December 2024



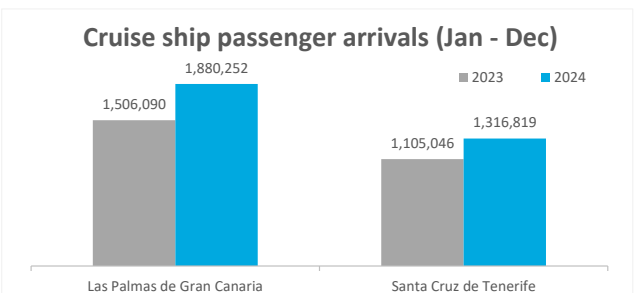
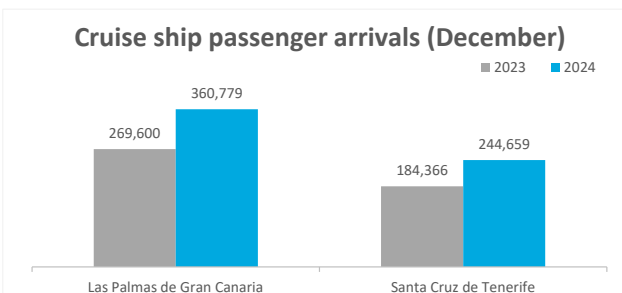
Annual cruise ship passenger arrivals in the Canary Islands

	PORTS					PORTS					All Canary ports
	Las Palmas ports:	Arrecife	El Rosario	La Luz y Las Palmas	Santa Cruz de Tenerife ports:	Santa Cruz de Tenerife	Los Cristianos	San S. de La Gomera	Santa Cruz de La Palma	La Estaca	
1998	135,675	60,171	14,996	60,508	156,948	131,602	1,499	8,532	14,709	606	292,623
1999	144,321	71,552	6,174	66,595	185,922	142,494	1,710	7,139	34,219	360	330,243
2000	154,336	69,407	1,915	83,014	177,250	130,064	44	9,931	36,640	571	331,586
2001	190,134	98,677	2,016	89,441	223,312	163,534	146	7,189	51,818	625	413,446
2002	262,028	141,165	19,576	101,287	350,556	244,629	496	17,313	87,731	387	612,584
2003	334,763	167,502	36,485	130,776	406,478	285,198	233	21,323	99,542	182	741,241
2004	393,395	212,690	34,697	146,008	456,375	331,920	0	12,722	111,494	239	849,770
2005	423,105	216,348	43,952	162,805	507,054	374,451	298	7,809	123,332	1,164	930,159
2006	362,525	165,069	47,817	149,639	447,155	314,661	784	9,304	120,243	2,163	809,680
2007	439,493	213,134	50,038	176,321	522,093	362,123	1,848	14,010	140,946	3,166	961,586
2008	559,003	253,152	70,758	235,093	557,371	402,018	0	10,919	143,764	670	1,116,374
2009	611,335	298,955	67,819	244,561	582,835	423,236	2,118	16,372	140,175	934	1,194,170
2010	671,192	299,972	74,651	296,569	740,022	536,331	543	16,590	186,558	0	1,411,214
2011	771,160	258,005	87,274	425,881	828,332	607,366	0	35,429	182,580	2,957	1,599,492
2012	840,266	327,972	86,262	426,032	885,623	669,353	37	27,121	183,316	5,796	1,725,889
2013	830,224	319,583	85,374	425,267	794,249	527,961	1,429	50,650	206,888	7,321	1,624,473
2014	1,065,076	358,519	117,802	588,755	848,161	544,841	213	69,200	229,940	3,967	1,913,235
2015	1,252,052	435,415	133,752	682,885	933,296	644,456	1,867	76,504	206,469	4,000	2,185,469
2016	1,099,388	377,803	111,297	610,288	883,324	559,100	1,551	88,635	224,433	9,605	1,983,567
2017	1,243,114	427,162	173,868	642,084	963,697	617,348	868	88,466	246,477	10,538	2,206,811
2018	1,333,007	423,116	233,520	676,371	1,020,144	663,300	888	94,667	255,892	5,397	2,350,740
2019	1,474,887	511,192	244,138	719,557	1,067,440	739,101	0	75,456	246,572	6,311	2,542,327
2020	516,824	149,450	101,424	265,950	345,092	228,402	0	43,225	70,656	2,809	861,916
2021	449,333	144,458	84,422	220,453	304,404	188,362	1,813	47,613	62,123	4,493	753,738
2022	1,029,117	335,320	199,848	493,949	759,928	542,294	628	69,637	141,333	6,036	1,789,045
2023	1,506,090	504,892	288,398	712,800	1,105,046	816,419	928	94,829	190,189	2,681	2,611,136
2024	1,880,252	609,742	377,949	892,561	1,316,819	971,933	336	88,951	254,149	1,450	3,197,071
Change, 24-23	374,162	104,850	89,551	179,761	211,773	155,514	-592	-5,878	63,960	-1,231	585,935
Change, %	24.8%	20.8%	31.1%	25.2%	19.2%	19.0%	-63.8%	-6.2%	33.6%	-45.9%	22.4%



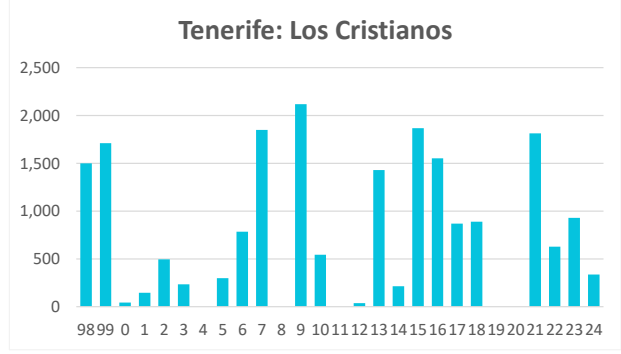
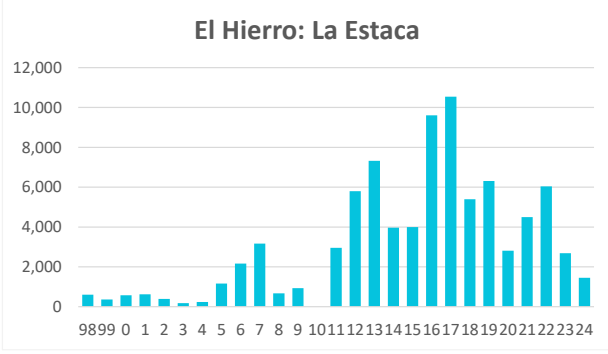
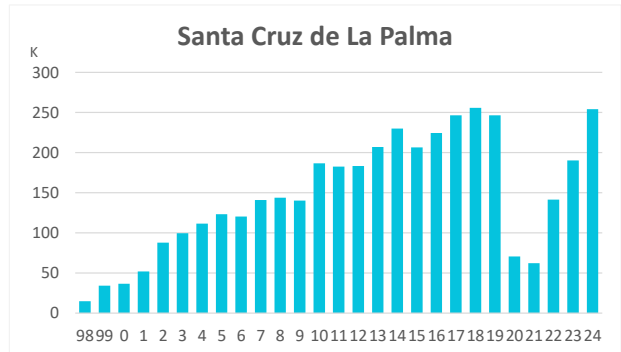
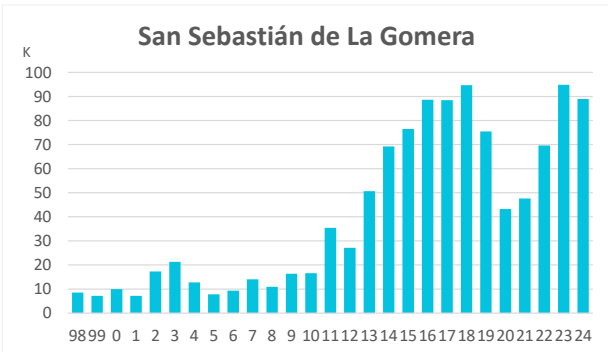
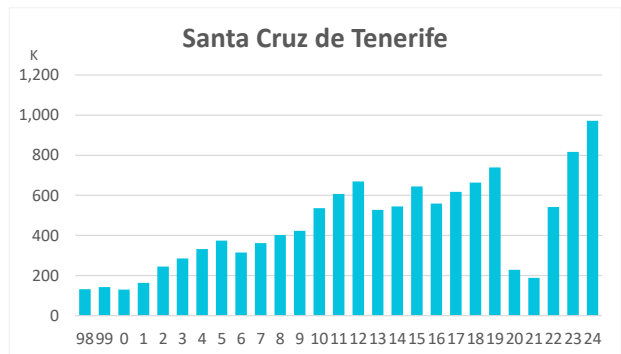
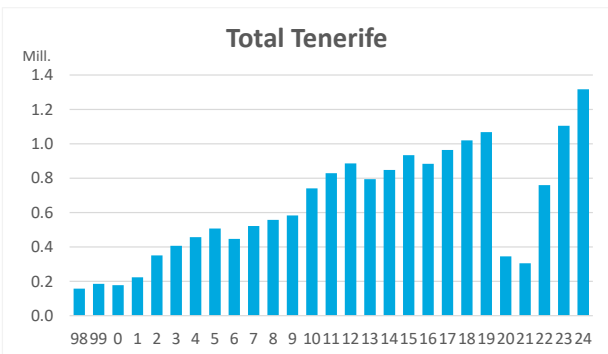
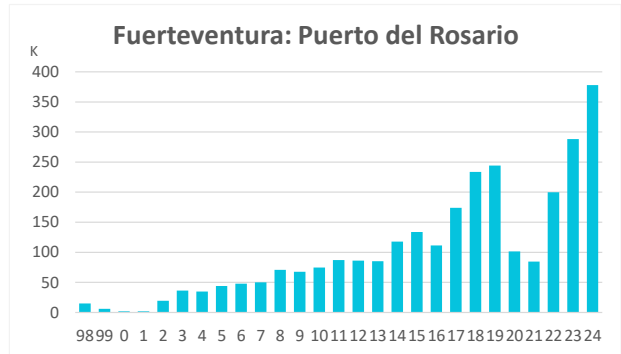
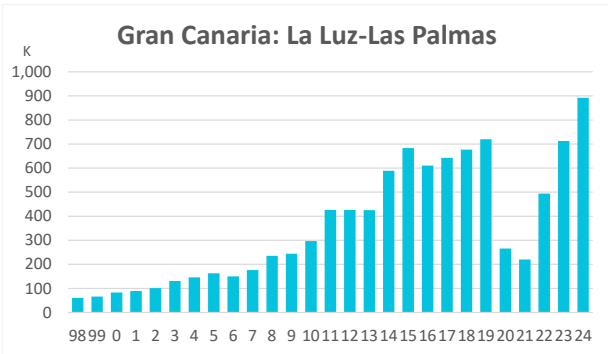
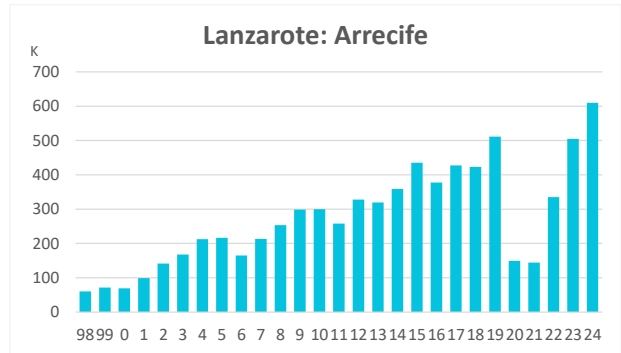
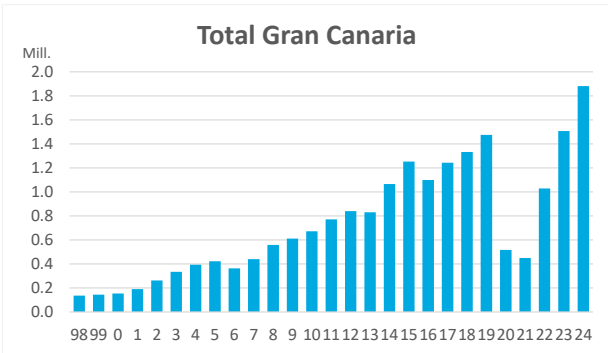
Recent trend: 2024

	PORTS					PORTS					All Canary ports
	Las Palmas ports:	Arrecife	El Rosario	La Luz y Las Palmas	Santa Cruz de Tenerife ports:	Santa Cruz de Tenerife	Los Cristianos	San S. de La Gomera	Santa Cruz de La Palma	La Estaca	
December											
2023	269,600	80,917	61,653	127,030	184,366	132,857	502	9,883	41,124	0	453,966
2024	360,779	109,002	82,197	169,580	244,659	177,239	0	14,860	52,560	0	605,438
Change, 24-23	91,179	28,085	20,544	42,550	60,293	44,382	-502	4,977	11,436	0	151,472
Change, %	33.8%	34.7%	33.3%	33.5%	32.7%	33.4%	-100.0%	50.4%	27.8%	--	33.4%
January - December											
2023	1,506,090	504,892	288,398	712,800	1,105,046	816,419	928	94,829	190,189	2,681	2,611,136
2024	1,880,252	609,742	377,949	892,561	1,316,819	971,933	336	88,951	254,149	1,450	3,197,071
Change, 24-23	374,162	104,850	89,551	179,761	211,773	155,514	-592	-5,878	63,960	-1,231	585,935
Change, %	24.8%	20.8%	31.1%	25.2%	19.2%	19.0%	-64%	-6.2%	33.6%	-45.9%	22.4%



Cruise ship passenger arrivals

Annual cruise ship pax by port



Sources: Autoridad portuaria de Las Palmas and Autoridad portuaria de Santa Cruz de Tenerife.