

Tourist arrivals in the Canary Islands (ISTAC)

December 2024



CANARY ISLANDS

	United Kingdom	Germany	Belgium	France	Netherlands	Ireland	Italy	Switzerland	Denmark	Finland	Norway	Sweden	Nordics	Others	International	Mainland	TOTAL
2023	515,745	289,422	44,505	77,160	60,081	58,888	66,499	15,448	39,903	40,936	57,399	64,177	202,415	113,030	1,443,192	126,421	1,569,613
2024	532,714	318,179	46,955	74,901	60,226	67,630	81,377	15,929	37,174	48,635	51,710	59,546	197,065	149,048	1,544,023	130,238	1,674,261
Change	16,969	28,757	2,450	-2,259	145	8,742	14,878	481	-2,729	7,699	-5,689	-4,631	-5,350	36,018	100,831	3,817	104,648
Change, %	3.3%	9.9%	5.5%	-2.9%	0.2%	14.8%	22.4%	3.1%	-6.8%	18.8%	-9.9%	-7.2%	-2.6%	31.9%	7.0%	3.0%	6.7%

LANZAROTE

	United Kingdom	Germany	Belgium	France	Netherlands	Ireland	Italy	Switzerland	Denmark	Finland	Norway	Sweden	Nordics	Others	International	Mainland	TOTAL
2023	134,324	28,944	5,026	21,160	8,492	25,272	9,462	-	-	-	-	-	9,644	13,242	255,566	20,261	275,827
2024	144,433	29,330	4,178	18,631	8,720	26,027	7,952	-	-	-	-	-	9,553	13,740	262,564	21,393	283,957
Change	10,109	386	-848	-2,529	228	755	-1,510	--	--	--	--	--	-91	498	6,998	1,132	8,130
Change, %	7.5%	1.3%	-16.9%	-12.0%	2.7%	3.0%	-16.0%	--	--	--	--	--	-0.9%	3.8%	2.7%	5.6%	2.9%

FUERTEVENTURA

	United Kingdom	Germany	Belgium	France	Netherlands	Ireland	Italy	Switzerland	Denmark	Finland	Norway	Sweden	Nordics	Others	International	Mainland	TOTAL
2023	66,228	69,019	3,635	10,353	5,805	5,460	10,553	-	-	-	-	-	8,185	16,810	196,048	12,084	208,132
2024	69,603	70,674	3,648	11,340	6,708	4,991	15,104	-	-	-	-	-	10,077	23,869	216,012	12,168	228,180
Change	3,375	1,655	13	987	903	-469	4,551	--	--	--	--	--	1,892	7,059	19,964	84	20,048
Change, %	5.1%	2.4%	0.4%	9.5%	15.6%	-8.6%	43.1%	--	--	--	--	--	23.1%	42.0%	10.2%	0.7%	9.6%

GRAN CANARIA

	United Kingdom	Germany	Belgium	France	Netherlands	Ireland	Italy	Switzerland	Denmark	Finland	Norway	Sweden	Nordics	Others	International	Mainland	TOTAL
2023	78,352	93,468	10,533	12,443	22,781	9,340	13,068	-	-	-	-	-	131,322	37,085	408,392	33,529	441,922
2024	81,881	103,495	11,185	10,132	23,872	10,216	15,860	-	-	-	-	-	127,097	46,014	429,752	33,132	462,883
Change	3,529	10,027	652	-2,311	1,091	876	2,792	--	--	--	--	--	-4,225	8,929	21,360	-397	20,961
Change, %	4.5%	10.7%	6.2%	-18.6%	4.8%	9.4%	21.4%	--	--	--	--	--	-3.2%	24.1%	5.2%	-1.2%	4.7%

TENERIFE

	United Kingdom	Germany	Belgium	France	Netherlands	Ireland	Italy	Switzerland	Denmark	Finland	Norway	Sweden	Nordics	Others	International	Mainland	TOTAL
2023	235,003	88,547	24,948	32,635	22,083	18,816	32,970	-	-	-	-	-	52,325	58,253	565,581	56,043	621,623
2024	235,565	103,959	27,687	34,548	20,169	26,339	42,051	-	-	-	-	-	49,758	79,020	619,095	60,149	679,245
Change	562	15,412	2,739	1,913	-1,914	7,523	9,081	--	--	--	--	--	-2,567	20,767	53,514	4,106	57,622
Change, %	0.2%	17.4%	11.0%	5.9%	-8.7%	40.0%	27.5%	--	--	--	--	--	-4.9%	35.6%	9.5%	7.3%	9.3%

LA PALMA

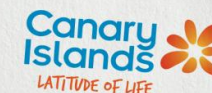
	United Kingdom	Germany	Belgium	France	Netherlands	Ireland	Italy	Switzerland	Denmark	Finland	Norway	Sweden	Nordics	Others	International	Mainland	TOTAL
2023	1,439	7,700	208	440	869	0	421	-	-	-	-	-	634	2,725	14,434	4,022	18,456
2024	1,056	9,323	219	107	673	0	367	-	-	-	-	-	438	2,114	14,296	2,672	16,969
Change	-383	1,623	11	-333	-196	0	-54	--	--	--	--	--	-196	-611	-138	-1,350	-1,487
Change, %	-26.6%	21.1%	5.3%	-75.7%	-22.6%	--	-12.8%	--	--	--	--	--	-30.9%	-22.4%	-1.0%	-33.6%	-8.1%

Source: Frontur (ISTAC). Tourist arrivals by air.

Note: on the result of the estimated Canary Islands total arrivals, tourists from La Gomera and El Hierro are included. Only main tourists are taken into account in each island.

Tourist arrivals in the Canary Islands (ISTAC)

January - December 2024



CANARY ISLANDS

	United Kingdom	Germany	Belgium	France	Netherlands	Ireland	Italy	Switzerland	Denmark	Finland	Norway	Sweden	Nordics	Others	International	Mainland	TOTAL
2023	5,612,270	2,551,711	432,062	841,310	658,423	725,824	654,625	190,973	304,652	213,049	407,598	381,552	1,306,851	1,292,530	14,266,572	1,944,338	16,210,911
2024	6,191,903	2,820,162	480,675	915,846	737,044	803,851	778,290	191,143	294,654	207,607	445,391	379,235	1,326,887	1,538,116	15,783,913	1,983,921	17,767,833
Change	579,633	268,451	48,613	74,536	78,621	78,027	123,665	170	-9,998	-5,442	37,793	-2,317	20,036	245,586	1,517,341	39,583	1,556,922
Change, %	10.3%	10.5%	11.3%	8.9%	11.9%	10.8%	18.9%	0.1%	-3.3%	-2.6%	9.3%	-0.6%	1.5%	19.0%	10.6%	2.0%	9.6%

LANZAROTE

	United Kingdom	Germany	Belgium	France	Netherlands	Ireland	Italy	Switzerland	Denmark	Finland	Norway	Sweden	Nordics	Others	International	Mainland	TOTAL
2023	1,496,007	253,510	59,015	218,740	80,142	348,679	97,546	-	-	-	-	-	65,674	111,959	2,731,267	317,923	3,049,188
2024	1,670,066	268,077	64,508	231,320	93,089	356,812	78,133	-	-	-	-	-	61,022	128,634	2,951,661	286,386	3,238,044
Change	174,059	14,567	5,493	12,580	12,947	8,133	-19,413	--	--	--	--	--	-4,652	16,675	220,394	-31,537	188,856
Change, %	11.6%	5.7%	9.3%	5.8%	16.2%	2.3%	-19.9%	--	--	--	--	--	-7.1%	14.9%	8.1%	-9.9%	6.2%

FUERTEVENTURA

	United Kingdom	Germany	Belgium	France	Netherlands	Ireland	Italy	Switzerland	Denmark	Finland	Norway	Sweden	Nordics	Others	International	Mainland	TOTAL
2023	702,055	716,685	23,819	132,159	62,090	62,599	117,762	-	-	-	-	-	64,858	221,837	2,103,863	170,997	2,274,859
2024	774,966	769,847	27,856	132,596	72,110	68,294	143,820	-	-	-	-	-	69,565	255,928	2,314,983	178,133	2,493,116
Change	72,911	53,162	4,037	437	10,020	5,695	26,058	--	--	--	--	--	4,707	34,091	211,120	7,136	218,257
Change, %	10.4%	7.4%	16.9%	0.3%	16.1%	9.1%	22.1%	--	--	--	--	--	7.3%	15.4%	10.0%	4.2%	9.6%

GRAN CANARIA

	United Kingdom	Germany	Belgium	France	Netherlands	Ireland	Italy	Switzerland	Denmark	Finland	Norway	Sweden	Nordics	Others	International	Mainland	TOTAL
2023	905,811	793,322	107,747	154,957	271,629	108,475	124,867	-	-	-	-	-	835,093	414,405	3,716,307	518,833	4,235,141
2024	1,003,439	866,293	121,347	161,732	310,625	122,734	136,189	-	-	-	-	-	860,363	463,591	4,046,309	541,098	4,587,405
Change	97,628	72,971	13,600	6,775	38,996	14,259	11,322	--	--	--	--	--	25,270	49,186	330,002	22,265	352,264
Change, %	10.8%	9.2%	12.6%	4.4%	14.4%	13.1%	9.1%	--	--	--	--	--	3.0%	11.9%	8.9%	4.3%	8.3%

TENERIFE

	United Kingdom	Germany	Belgium	France	Netherlands	Ireland	Italy	Switzerland	Denmark	Finland	Norway	Sweden	Nordics	Others	International	Mainland	TOTAL
2023	2,489,323	721,719	236,626	329,505	235,918	205,472	312,439	-	-	-	-	-	332,892	712,281	5,576,170	873,192	6,449,359
2024	2,726,522	826,975	262,958	383,834	247,148	255,646	417,714	-	-	-	-	-	328,813	861,737	6,311,340	926,263	7,237,603
Change	237,199	105,256	26,332	54,329	11,230	50,174	105,275	--	--	--	--	--	-4,079	149,456	735,170	53,071	788,244
Change, %	9.5%	14.6%	11.1%	16.5%	4.8%	24.4%	33.7%	--	--	--	--	--	-1.2%	21.0%	13.2%	6.1%	12.2%

LA PALMA

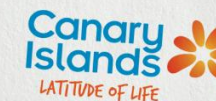
	United Kingdom	Germany	Belgium	France	Netherlands	Ireland	Italy	Switzerland	Denmark	Finland	Norway	Sweden	Nordics	Others	International	Mainland	TOTAL
2023	12,965	45,111	3,278	3,467	7,743	264	1,533	-	-	-	-	-	5,850	18,171	98,379	50,339	148,720
2024	12,519	72,208	3,101	4,889	13,512	118	1,866	-	-	-	-	-	5,439	16,562	130,213	39,933	170,147
Change	-446	27,097	-177	1,422	5,769	-146	333	--	--	--	--	--	-411	-1,609	31,834	-10,406	21,427
Change, %	-3.4%	60.1%	-5.4%	41.0%	74.5%	-55.3%	21.7%	--	--	--	--	--	-7.0%	-8.9%	32.4%	-20.7%	14.4%

Source: Frontur (ISTAC). Tourist arrivals by air.

Note: on the result of the estimated Canary Islands total arrivals, tourists from La Gomera and El Hierro are included. Only main tourists are taken into account in each island.

International tourist arrivals in Spain (INE)

December 2024



BY COUNTRY OF RESIDENCE

Monthly

	UK	Germany	Belgium	France	Netherlands	Ireland	Italy	Switzerland	Denmark	Finland	Norway	Sweden	Nordics	Russia	Portugal	Austria	Others	INTERNATIONAL
Dec-23	912,563	561,358	170,177	818,968	205,546	124,530	353,227	113,652	72,852	60,107	90,063	119,931	342,953	0	234,831	50,148	1,321,132	5,209,085
Dec-24	900,804	625,154	170,793	775,347	227,479	144,728	376,008	104,095	71,301	56,734	96,044	132,367	356,446	0	225,451	54,787	1,304,853	5,265,945
Change	-11,759	63,796	616	-43,621	21,933	20,198	22,781	-9,557	-1,551	-3,373	5,981	12,436	13,493	--	-9,380	4,639	-16,279	56,860
Change, %	-1.3%	11.4%	0.4%	-5.3%	10.7%	16.2%	6.4%	-8.4%	-2.1%	-5.6%	6.6%	10.4%	3.9%	--	-4.0%	9.3%	-1.2%	1.1%

Year-to-date

	UK	Germany	Belgium	France	Netherlands	Ireland	Italy	Switzerland	Denmark	Finland	Norway	Sweden	Nordics	Russia	Portugal	Austria	Others	INTERNATIONAL
Jan-Dec 23	17,262,286	10,989,659	2,758,683	11,768,265	4,320,629	2,476,103	4,849,749	2,002,197	1,177,807	588,551	1,354,611	1,674,704	4,795,673	0	2,802,773	1,247,568	19,895,463	85,169,048
Jan-Dec 24	18,403,216	11,937,236	3,063,430	12,980,342	4,780,863	2,773,264	5,437,840	2,117,258	1,248,532	608,826	1,446,226	1,843,847	5,147,431	--	2,986,601	1,226,128	22,945,896	93,799,505
Change	1,140,930	947,577	304,747	1,212,077	460,234	297,161	588,091	115,061	70,725	20,275	91,615	169,143	351,758	--	183,828	-21,440	3,050,433	8,630,457
Change, %	6.6%	8.6%	11.0%	10.3%	10.7%	12.0%	12.1%	5.7%	6.0%	3.4%	6.8%	10.1%	7.3%	--	6.6%	-1.7%	15.3%	10.1%

BY AUTONOMOUS COMMUNITY

Monthly

	Canary Islands	Andalusia	Aragon	Asturias	aric Islands	Cantabria	C. y Leon	C. La Mancha	Catalonia	encian Region	Extremadura	Galicia	Madrid	Murcia	Navarre	ue Country	La Rioja	SPAIN
Dec-23	1,374,111	624,935	38,005	0	165,588	29,980	96,570	0	1,020,095	712,546	0	184,891	605,809	72,216	0	180,463	0	5,209,085
Dec-24	1,448,229	680,492	52,375	0	182,446	15,186	92,841	0	1,073,406	667,825	0	159,658	602,274	74,691	0	118,422	0	5,265,945
Change	74,118	55,557	14,370	0	16,858	-14,794	-3,729	0	53,311	-44,721	0	-25,233	-3,535	2,475	0	-62,041	0	56,860
Change, %	5.4%	8.9%	37.8%	--	10.2%	-49.3%	-3.9%	--	5.2%	-6.3%	--	-13.6%	-0.6%	3.4%	--	-34.4%	--	1.1%

Year-to-date

	Canary Islands	Andalusia	Aragon	Asturias	aric Islands	Cantabria	C. y Leon	C. La Mancha	Catalonia	encian Region	Extremadura	Galicia	Madrid	Murcia	Navarre	ue Country	La Rioja	SPAIN
Jan-Dec 23	13,950,687	12,190,566	426,797	330,373	14,424,512	434,109	1,217,205	136,501	18,182,612	10,474,166	158,575	1,616,930	7,846,067	976,512	272,463	2,002,174	10,759	85,169,048
Jan-Dec 24	15,226,886	13,597,785	506,430	253,599	15,311,570	476,275	1,353,304	135,491	19,939,896	11,938,667	59,199	1,841,857	8,823,004	1,158,201	298,377	2,165,686	13,942	93,799,505
Change	1,276,199	1,407,219	79,633	-76,774	887,058	42,166	136,099	-1,010	1,757,284	1,464,501	-99,376	224,927	976,937	181,689	25,914	163,512	3,183	8,630,457
Change, %	9.1%	11.5%	18.7%	-23.2%	6.1%	9.7%	11.2%	-0.7%	9.7%	14.0%	-62.7%	13.9%	12.5%	18.6%	9.5%	8.2%	29.6%	10.1%

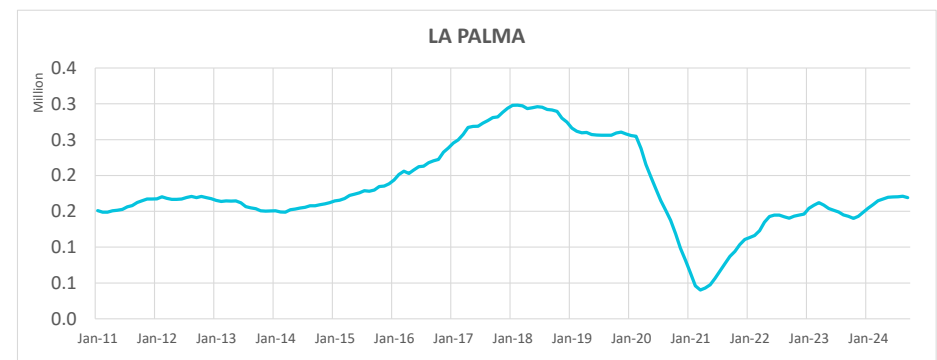
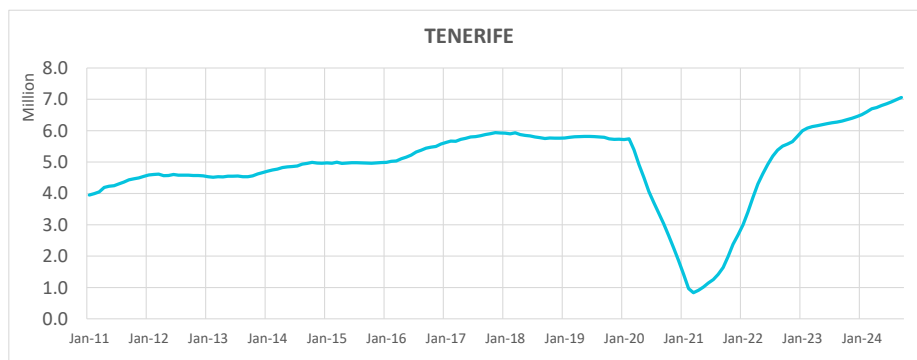
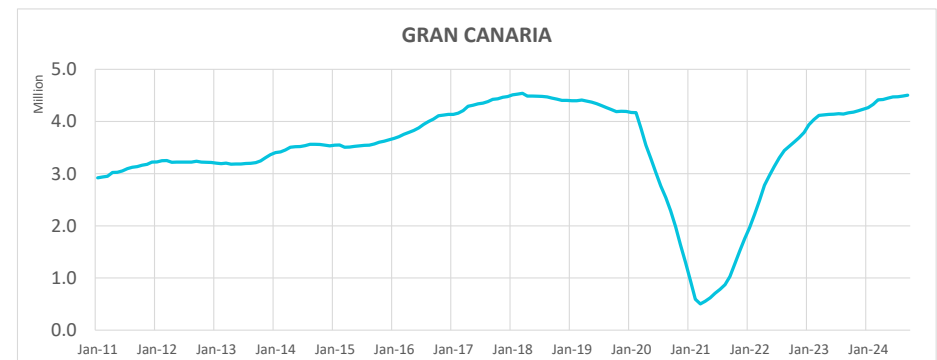
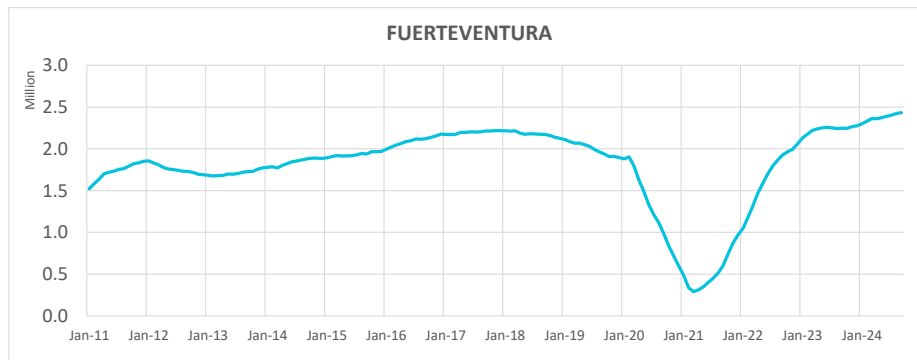
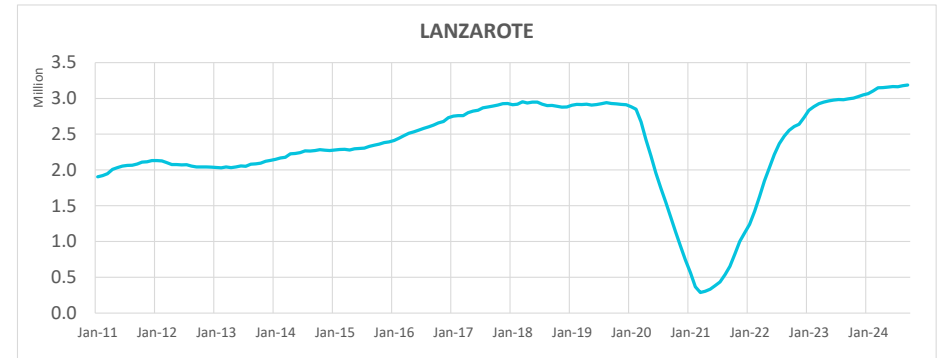
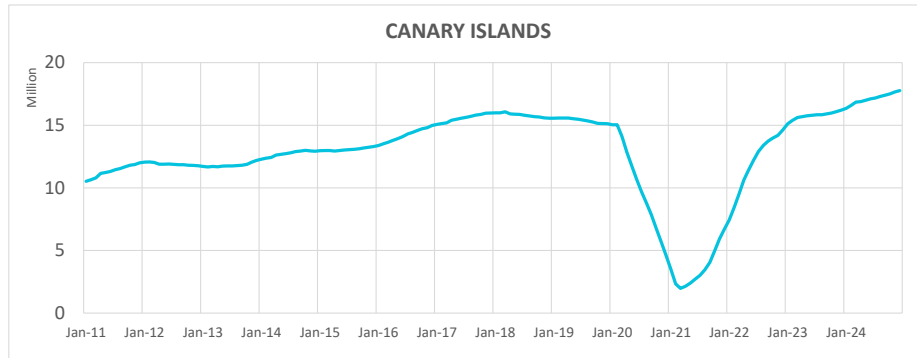
Note: Since March 2022, "Russia" is included in Others. Source: Frontur (INE).

Tourist arrivals in the Canary Islands (ISTAC)

December 2024



Tourist arrivals in the Canary Islands (12-month moving sum)

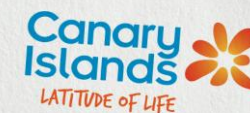


Source: Frontur (ISTAC). Tourist arrivals by air.

Note: on the result of the estimated Canary Islands total arrivals, tourists from La Gomera and El Hierro are included. Only main tourists are taken into account in each island.

Tourist arrivals in the Canary Islands (ISTAC)

December 2024



Number of tourists by holiday package booking and country of residence

December 2024

	Book	Do not book	TOTAL	% Book	% Do not book
International	803,308	740,716	1,544,024	52.0%	48.0%
- Germany	194,134	124,045	318,179	61.0%	39.0%
- Netherlands	36,921	23,305	60,226	61.3%	38.7%
- Ireland	24,656	42,975	67,630	36.5%	63.5%
- Nordics	118,033	79,032	197,065	59.9%	40.1%
- United Kingdom	315,577	217,137	532,714	59.2%	40.8%
- Switzerland	6,258	9,670	15,929	39.3%	60.7%
- Others	107,729	244,552	352,281	30.6%	69.4%
Spanish Mainland	27,022	103,216	130,238	20.7%	79.3%
TOTAL	830,330	843,932	1,674,262	49.6%	50.4%

January - December 2024

	Book	Do not book	TOTAL	% Book	% Do not book
International	8,535,437	7,248,484	15,783,918	54.1%	45.9%
- Germany	1,848,004	972,159	2,820,162	65.5%	34.5%
- Netherlands	484,462	252,584	737,044	65.7%	34.3%
- Ireland	286,628	517,224	803,851	35.7%	64.3%
- Nordics	820,545	506,344	1,326,889	61.8%	38.2%
- United Kingdom	3,705,182	2,486,721	6,191,903	59.8%	40.2%
- Switzerland	70,774	120,368	191,143	37.0%	63.0%
- Others	1,319,842	2,393,084	3,712,926	35.5%	64.5%
Spanish Mainland	412,542	1,571,378	1,983,921	20.8%	79.2%
TOTAL	8,947,979	8,819,862	17,767,839	50.4%	49.6%

Share of tourists by accommodation type and country of residence

December 2024

	Hotels and similar	Apartments	Property	Cruise	House of friend or relative	Others
International	59.1%	19.6%	3.2%	7.5%	4.0%	6.6%
- Germany	54.2%	11.2%	4.5%	20.1%	3.4%	6.6%
- Netherlands	65.4%	23.6%	1.8%	2.3%	2.1%	4.9%
- Ireland	56.5%	29.9%	2.9%	0.7%	4.1%	6.0%
- Nordics	61.0%	33.0%	2.4%	0.3%	1.5%	1.8%
- United Kingdom	61.1%	21.3%	2.4%	7.9%	2.5%	4.7%
- Switzerland	65.9%	12.5%	5.2%	1.6%	4.8%	10.0%
- Others	58.5%	14.7%	3.6%	2.1%	8.6%	12.4%
Spanish Mainland	62.7%	7.7%	1.8%	0.0%	15.8%	12.0%
TOTAL	59.4%	18.7%	3.0%	6.9%	5.0%	7.0%

January - December 2024

	Hotels and similar	Apartments	Property	Cruise	House of friend or relative	Others
International	65.2%	19.7%	2.6%	3.1%	3.6%	5.8%
- Germany	66.5%	11.2%	3.4%	10.6%	3.4%	4.9%
- Netherlands	68.1%	24.4%	1.5%	0.6%	2.0%	3.4%
- Ireland	55.7%	33.3%	2.2%	0.4%	2.8%	5.6%
- Nordics	63.4%	29.0%	2.8%	0.1%	2.4%	2.3%
- United Kingdom	65.6%	23.0%	2.0%	2.7%	2.5%	4.2%
- Switzerland	69.7%	15.2%	3.1%	0.8%	5.0%	6.2%
- Others	65.6%	13.5%	3.0%	0.5%	6.6%	10.8%
Spanish Mainland	58.4%	9.7%	1.6%	0.0%	18.1%	12.2%
TOTAL	64.5%	18.5%	2.5%	2.8%	5.2%	6.5%

Source: Frontur (ISTAC). Tourist arrivals by air.

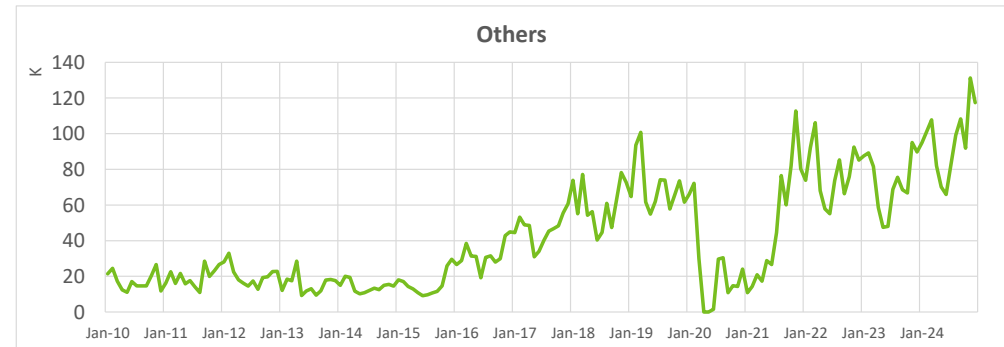
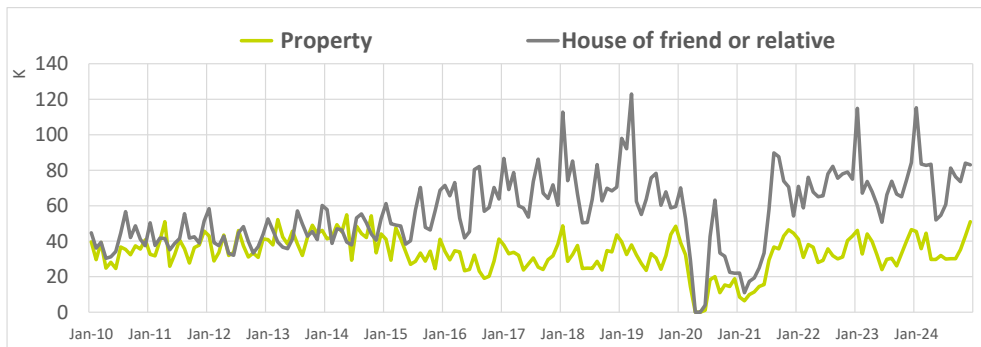
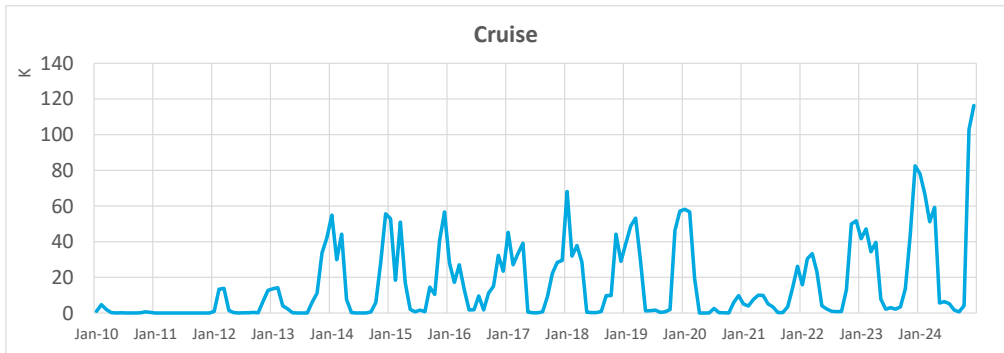
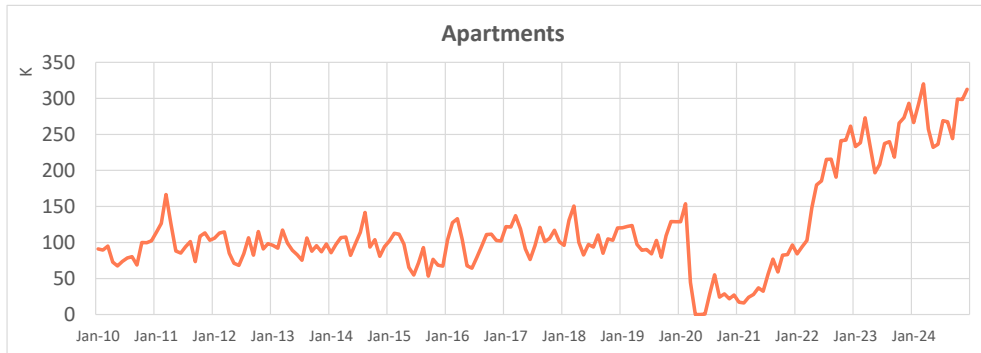
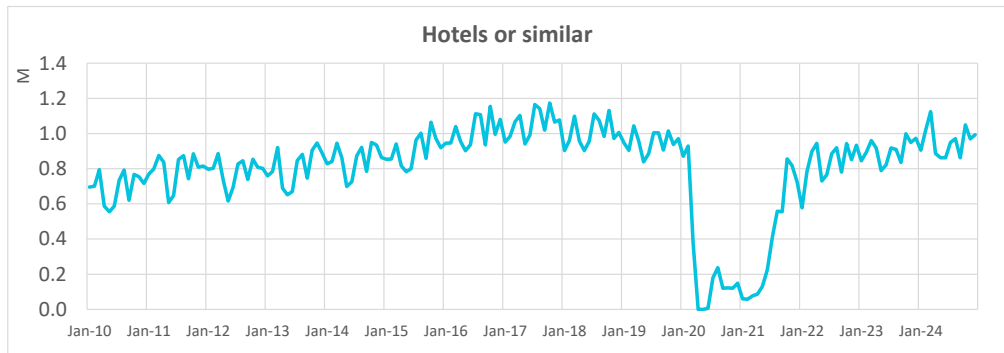
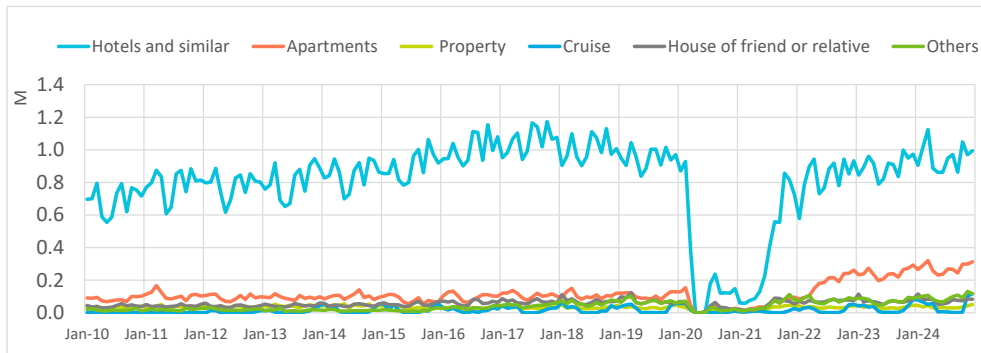
Note: on the result of the estimated Canary Islands total arrivals, tourists from La Gomera and El Hierro are included.

Tourist arrivals in the Canary Islands (ISTAC)

December 2024

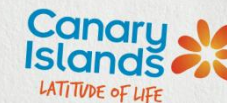


Number of tourists by type of accommodation



Tourist arrivals in the Canary Islands (ISTAC)

December 2024



Number of tourists by holiday package booking and island of stay

		December 2024					
		Lanzarote	Fuerteventura	Gran Canaria	Tenerife	La Palma	CANARY ISLANDS
Book	Total	190,052	173,879	265,528	329,151	23,436	830,330
	- International	181,877	170,943	263,149	315,673	23,364	803,308
	- Spanish Mainland	8,175	2,936	2,379	13,478	72	27,022
Do not book	Total	136,775	101,552	233,439	376,448	16,109	843,932
	- International	122,978	92,187	201,988	328,753	12,726	740,716
	- Spanish Mainland	13,797	9,365	31,451	47,695	3,383	103,216
TOTAL	All markets	326,827	275,431	498,966	705,599	39,545	1,674,262
	- International	304,855	263,130	465,137	644,426	36,090	1,544,024
	- Spanish Mainland	21,972	12,301	33,829	61,173	3,455	130,238
% book package	Total	58.2%	63.1%	53.2%	46.6%	59.3%	49.6%
	- International	59.7%	65.0%	56.6%	49.0%	64.7%	52.0%
	- Spanish Mainland	37.2%	23.9%	7.0%	22.0%	2.1%	20.7%

		January - December 2024					
		Lanzarote	Fuerteventura	Gran Canaria	Tenerife	La Palma	CANARY ISLANDS
Book	Total	1,976,345	1,689,658	2,547,387	3,129,553	112,001	8,947,979
	- International	1,899,620	1,648,808	2,458,991	2,924,519	107,213	8,535,437
	- Spanish Mainland	76,725	40,850	88,396	205,034	4,788	412,542
Do not book	Total	1,430,566	970,609	2,168,822	4,255,156	139,110	8,819,862
	- International	1,213,399	828,151	1,706,849	3,516,770	100,818	7,248,484
	- Spanish Mainland	217,167	142,458	461,973	738,386	38,292	1,571,378
TOTAL	All markets	3,406,911	2,660,267	4,716,204	7,384,706	251,112	17,767,839
	- International	3,113,019	2,476,959	4,165,838	6,441,288	208,031	15,783,918
	- Spanish Mainland	293,892	183,308	550,366	943,418	43,081	1,983,921
% book package	Total	58.0%	63.5%	54.0%	42.4%	44.6%	50.4%
	- International	61.0%	66.6%	59.0%	45.4%	51.5%	54.1%
	- Spanish Mainland	26.1%	22.3%	16.1%	21.7%	11.1%	20.8%

Share of tourists by accommodation type and island of stay

		December 2024					
		Lanzarote	Fuerteventura	Gran Canaria	Tenerife	La Palma	CANARY ISLANDS
International	Hotels	52.2%	65.0%	55.1%	52.1%	22.9%	59.1%
	Apartments	25.0%	10.6%	20.5%	16.1%	10.2%	19.6%
	Property	2.7%	2.0%	3.0%	3.2%	2.5%	3.2%
	Cruise	12.2%	15.9%	13.9%	15.0%	52.7%	7.5%
	House of friend or relative	2.0%	3.4%	4.4%	4.2%	2.7%	4.0%
	Others	5.9%	3.2%	3.1%	9.5%	9.0%	6.6%
	Spanish Mainland	Hotels	63.9%	69.9%	62.6%	61.9%	43.3%
Apartments		9.3%	9.3%	7.8%	7.2%	5.0%	7.7%
Property		2.0%	2.8%	2.3%	1.2%	3.9%	1.8%
Cruise		0.0%	0.0%	0.0%	0.1%	0.0%	0.0%
House of friend or relative		10.9%	14.3%	21.7%	13.9%	18.5%	15.8%
Others		14.0%	3.7%	5.7%	15.8%	29.3%	12.0%
TOTAL		Hotels	53.0%	65.2%	55.6%	52.9%	24.6%
	Apartments	23.9%	10.5%	19.7%	15.3%	9.8%	18.7%
	Property	2.6%	2.0%	3.0%	3.0%	2.6%	3.0%
	Cruise	11.3%	15.2%	13.0%	13.7%	48.1%	6.9%
	House of friend or relative	2.6%	3.9%	5.6%	5.0%	4.1%	5.0%
	Others	6.5%	3.3%	3.3%	10.0%	10.8%	7.0%

		January - December 2024					
		Lanzarote	Fuerteventura	Gran Canaria	Tenerife	La Palma	CANARY ISLANDS
International	Hotels	60.2%	75.6%	63.5%	60.9%	31.1%	65.2%
	Apartments	25.8%	10.8%	20.6%	18.3%	16.2%	19.7%
	Property	1.7%	2.0%	2.4%	3.1%	2.1%	2.6%
	Cruise	4.3%	5.5%	6.9%	5.3%	29.0%	3.1%
	House of friend or relative	1.9%	3.5%	4.1%	3.9%	5.9%	3.6%
	Others	6.1%	2.7%	2.5%	8.4%	15.7%	5.8%
	Spanish Mainland	Hotels	62.9%	64.5%	56.7%	58.1%	44.5%
Apartments		12.7%	11.3%	9.1%	9.2%	6.6%	9.7%
Property		1.3%	2.5%	1.8%	1.3%	2.6%	1.6%
Cruise		0.0%	0.0%	0.1%	0.0%	0.1%	0.0%
House of friend or relative		12.3%	15.8%	27.2%	14.6%	23.5%	18.1%
Others		10.8%	5.9%	5.1%	16.7%	22.7%	12.2%
TOTAL		Hotels	60.4%	74.8%	62.7%	60.6%	33.4%
	Apartments	24.7%	10.8%	19.3%	17.1%	14.6%	18.5%
	Property	1.7%	2.0%	2.3%	2.9%	2.1%	2.5%
	Cruise	4.0%	5.1%	6.1%	4.6%	24.0%	2.8%
	House of friend or relative	2.8%	4.3%	6.8%	5.3%	8.9%	5.2%
	Others	6.5%	2.9%	2.8%	9.5%	16.9%	6.5%

Source: Frontur (ISTAC). Tourist arrivals by air.

Note: in the islands are included tourists who have chosen the island as the main destination of their trip or as a secondary destination.