

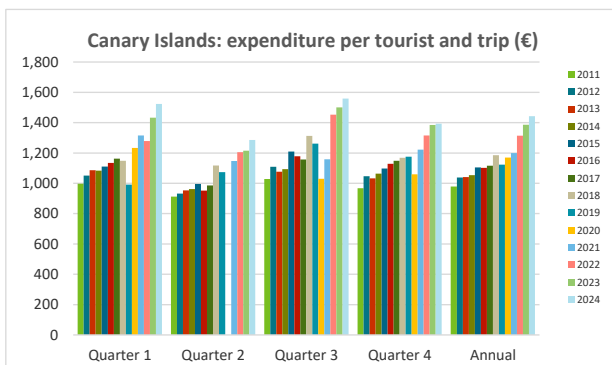
Expenditure per tourist and trip By island of stay



Expenditure per tourist and trip (€)

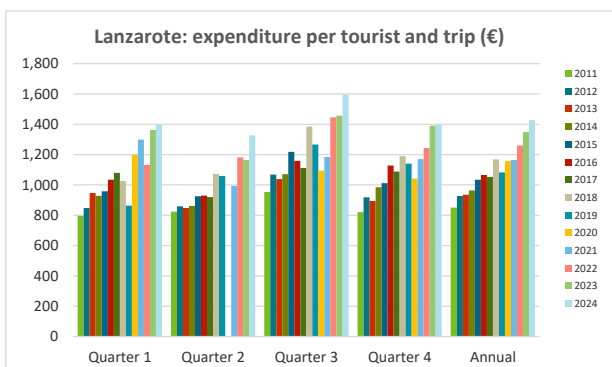
CANARY ISLANDS

	Quarter 1	Quarter 2	Quarter 3	Quarter 4	Annual
2011	997	913	1,029	968	978
2012	1,051	933	1,109	1,047	1,039
2013	1,086	954	1,077	1,032	1,041
2014	1,083	962	1,093	1,064	1,053
2015	1,110	996	1,209	1,097	1,105
2016	1,135	952	1,178	1,129	1,102
2017	1,162	986	1,157	1,148	1,117
2018	1,149	1,117	1,313	1,168	1,186
2019	991	1,074	1,261	1,175	1,123
2020	1,233		1,030	1,060	1,170
2021	1,315	1,148	1,158	1,223	1,199
2022	1,279	1,205	1,452	1,315	1,314
2023	1,432	1,215	1,501	1,385	1,387
2024	1,524	1,286	1,559	1,393	1,443



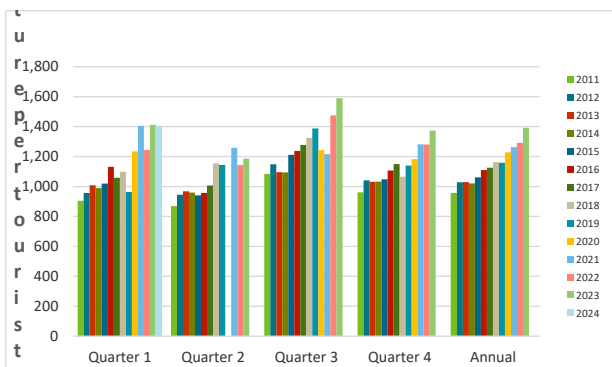
LANZAROTE

	Quarter 1	Quarter 2	Quarter 3	Quarter 4	Annual
2011	795	823	954	820	851
2012	848	860	1,068	918	928
2013	946	848	1,039	895	935
2014	929	862	1,072	984	964
2015	958	926	1,219	1,012	1,034
2016	1,035	930	1,159	1,127	1,066
2017	1,080	920	1,113	1,088	1,052
2018	1,026	1,073	1,386	1,190	1,169
2019	863	1,058	1,267	1,140	1,082
2020	1,199		1,095	1,041	1,157
2021	1,299	993	1,184	1,170	1,164
2022	1,132	1,181	1,446	1,244	1,260
2023	1,363	1,164	1,457	1,391	1,349
2024	1,399	1,327	1,596	1,397	1,428



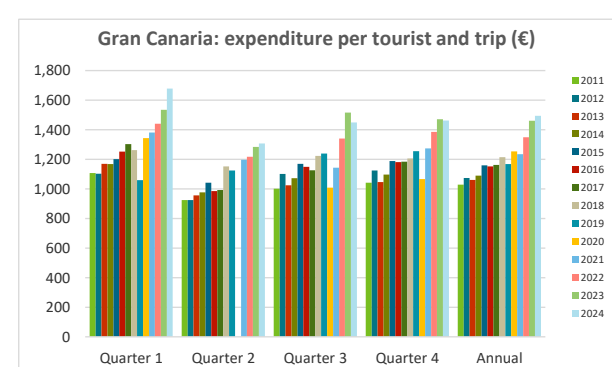
FUERTEVENTURA

	Quarter 1	Quarter 2	Quarter 3	Quarter 4	Annual
2011	904	869	1,084	960	957
2012	957	945	1,148	1,041	1,027
2013	1,007	969	1,096	1,031	1,029
2014	990	959	1,094	1,032	1,022
2015	1,020	941	1,212	1,048	1,060
2016	1,132	957	1,237	1,107	1,110
2017	1,058	1,007	1,277	1,150	1,126
2018	1,099	1,155	1,325	1,065	1,163
2019	964	1,144	1,388	1,139	1,159
2020	1,234		1,243	1,182	1,228
2021	1,405	1,258	1,215	1,282	1,263
2022	1,244	1,142	1,475	1,280	1,291
2023	1,412	1,186	1,589	1,373	1,392
2024	1,405				



GRAN CANARIA

	Quarter 1	Quarter 2	Quarter 3	Quarter 4	Annual
2011	1,107	924	1,001	1,042	1,029
2012	1,103	924	1,101	1,124	1,073
2013	1,170	956	1,025	1,046	1,060
2014	1,167	976	1,072	1,097	1,089
2015	1,201	1,042	1,169	1,188	1,159
2016	1,252	985	1,149	1,181	1,152
2017	1,303	993	1,125	1,184	1,162
2018	1,263	1,152	1,223	1,206	1,215
2019	1,060	1,125	1,240	1,255	1,168
2020	1,343		1,009	1,067	1,254
2021	1,381	1,197	1,144	1,274	1,235
2022	1,440	1,217	1,341	1,386	1,349
2023	1,535	1,284	1,516	1,471	1,461
2024	1,678	1,307	1,449	1,463	1,494



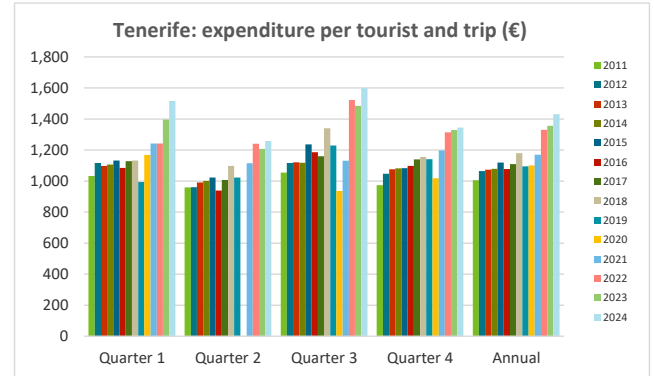
Expenditure per tourist and trip

By island of stay



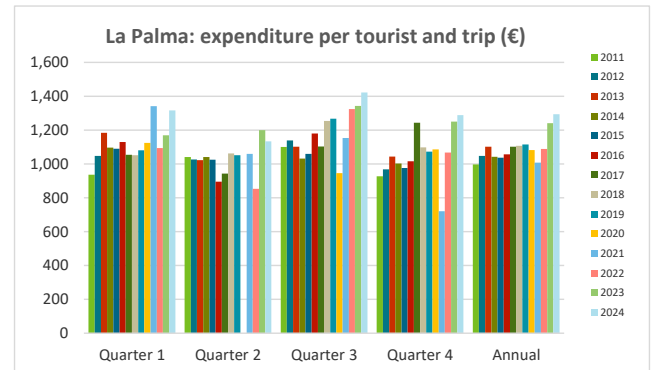
TENERIFE

	Quarter 1	Quarter 2	Quarter 3	Quarter 4	Annual
2011	1,033	958	1,055	973	1,006
2012	1,117	961	1,116	1,047	1,064
2013	1,098	991	1,120	1,077	1,074
2014	1,106	1,000	1,117	1,081	1,078
2015	1,132	1,022	1,237	1,083	1,119
2016	1,085	939	1,185	1,097	1,078
2017	1,128	1,006	1,160	1,139	1,109
2018	1,132	1,098	1,341	1,156	1,180
2019	993	1,023	1,229	1,141	1,095
2020	1,169		936	1,019	1,101
2021	1,242	1,114	1,131	1,197	1,169
2022	1,242	1,241	1,523	1,315	1,330
2023	1,397	1,207	1,484	1,329	1,356
2024	1,516	1,258	1,599	1,345	1,431



LA PALMA

	Quarter 1	Quarter 2	Quarter 3	Quarter 4	Annual
2011	937	1,040	1,100	927	997
2012	1,048	1,027	1,139	968	1,048
2013	1,184	1,022	1,102	1,043	1,101
2014	1,096	1,041	1,032	1,003	1,043
2015	1,090	1,025	1,060	976	1,037
2016	1,130	896	1,180	1,016	1,057
2017	1,054	942	1,103	1,244	1,101
2018	1,051	1,062	1,254	1,097	1,108
2019	1,081	1,051	1,267	1,072	1,115
2020	1,125		945	1,087	1,081
2021	1,341	1,059	1,154	721	1,007
2022	1,095	853	1,324	1,067	1,089
2023	1,169	1,199	1,342	1,250	1,241
2024	1,316	1,134	1,422	1,289	1,294



Linked series since 2010.

Source: ISTAC (Encuesta sobre el Gasto Turístico).

Note: Tourists under 16 years old are excluded.