

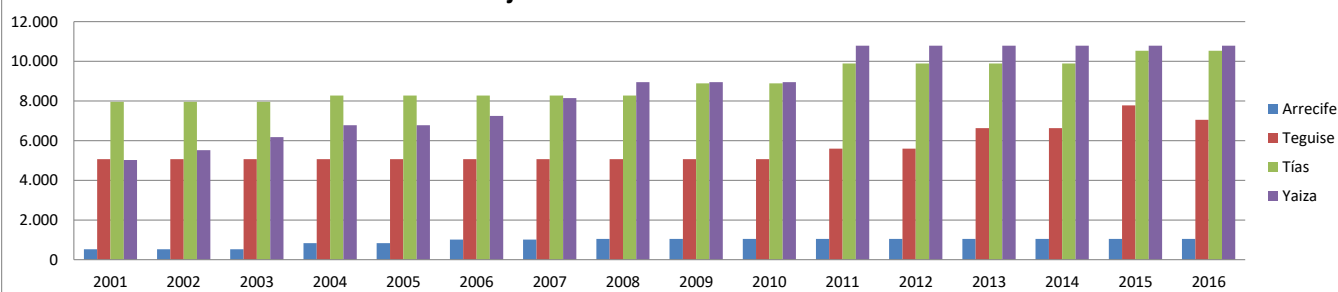
## Plazas alojativas hoteleras en Lanzarote (2001 - 2016)

Año	ARRECIFE	TEGUISE	TÍAS (Puerto del Carmen)	YAIZA (Playas de Papagayo, el Charco Verde)	RESTO	LANZAROTE	PESO EN CANARIAS
2001	522	5.070	7.961	5.028	30	18.611	13,7%
2002	522	5.070	7.961	5.520	30	19.103	13,4%
2003	522	5.070	7.961	6.180	30	19.763	13,2%
2004	837	5.070	8.276	6.780	30	20.993	13,4%
2005	837	5.070	8.276	6.780	30	20.993	12,5%
2006	1.017	5.070	8.276	7.247	30	21.640	12,4%
2007	1.017	5.070	8.276	8.144	30	22.537	12,0%
2008	1.044	5.070	8.276	8.947	30	23.367	12,1%
2009	1.044	5.070	8.886	8.947	30	23.977	12,1%
2010	1.044	5.070	8.886	8.947	30	23.977	11,7%
2011	1.044	5.601	9.886	10.791	52	27.374	13,0%
2012	1.044	5.601	9.886	10.791	52	27.374	12,9%
2013	1.044	6.631	9.886	10.791	52	28.404	13,3%
2014	1.044	6.631	9.886	10.791	352	28.704	13,8%
2015	1.044	7.774	10.532	10.791	352	30.493	14,4%
2016	1.044	7.048	10.532	10.791	352	29.767	13,9%

## Plazas alojativas extrahoteleras en Lanzarote (2001 - 2016)

Año	ARRECIFE	TEGUISE	TÍAS (Puerto del Carmen)	YAIZA (Playas de Papagayo, el Charco Verde)	RESTO	LANZAROTE	PESO EN CANARIAS
2001	305	12.278	29.226	5.872	1.365	49.046	21,0%
2002	305	12.285	29.226	6.331	1.365	49.512	21,2%
2003	305	12.787	29.389	6.232	1.383	50.096	21,4%
2004	305	13.246	28.984	6.424	1.395	50.354	21,6%
2005	305	13.246	28.569	6.632	1.395	50.147	21,7%
2006	305	13.246	28.569	6.165	1.395	49.680	21,6%
2007	305	12.549	27.963	6.788	1.395	49.000	21,5%
2008	305	12.693	27.718	6.788	1.325	48.829	21,5%
2009	305	12.693	26.871	6.788	1.328	47.985	21,5%
2010	305	12.693	26.359	6.788	1.328	47.473	21,4%
2011	305	11.806	25.018	5.548	1.340	44.017	20,2%
2012	305	11.423	24.830	5.558	1.340	43.456	20,1%
2013	305	10.615	23.913	5.558	1.378	41.769	19,6%
2014	305	10.078	24.036	5.576	1.388	41.383	19,6%
2015	369	8.869	22.759	5.660	1.442	39.099	18,6%
2016	418	7.729	22.975	5.847	1.735	38.704	18,2%

## Plazas alojativas hoteleras en Lanzarote



## Plazas alojativas extrahoteleras en Lanzarote

