

Tourist accommodation indicators by tourist areas

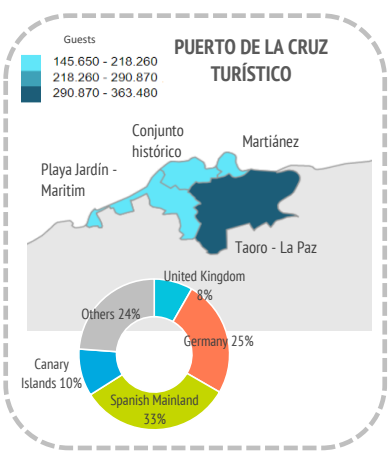
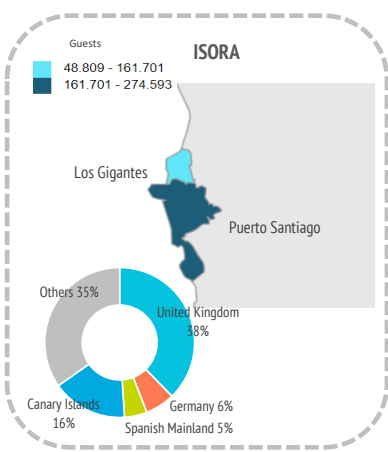
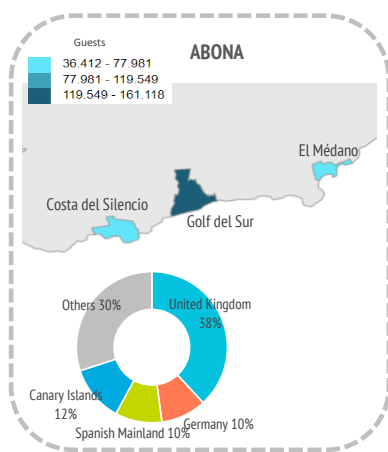
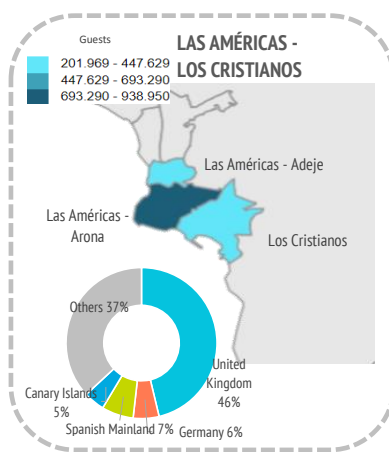
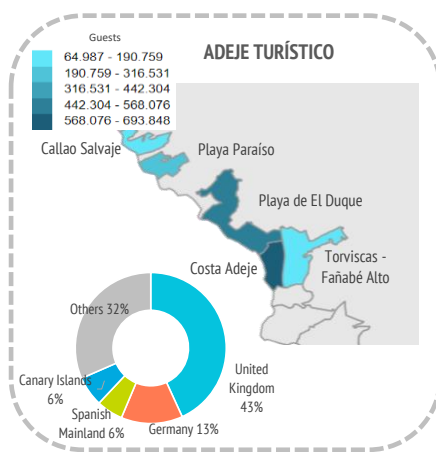
Tenerife (2018)



GUESTS IN ACCOMMODATION

Tourist areas	Adeje turístico					Las Américas - Los Cristianos			Abona			Isora		Puerto de la Cruz turístico			Others	Tenerife	
	Callao Salvaje	Playa Paraiso	Playa de El Duque	Costa Adeje	Torviscas-Fañabé Alto	Las Américas-Adeje	Las Américas-Arona	Los Cristianos	Costa del Silencio	El Médano	Golf del Sur	Los Gigantes	Puerto Santiago	Playa Jardín-Maritim	Conjunto histórico	Taoro-La Paz	Martínez		
International	56,420	163,432	409,664	628,144	137,722	174,389	847,415	306,117	56,593	28,823	125,160	37,969	217,068	104,013	75,558	231,351	68,111	302,159	3,970,108
- United Kingdom	26,969	79,593	186,393	301,485	90,636	88,085	447,818	156,725	23,649	9,451	69,982	23,972	98,002	9,303	9,318	36,654	14,091	85,931	1,758,057
- Germany	5,078	27,292	76,912	96,119	3,999	13,611	48,117	21,078	4,393	9,508	12,392	1,699	18,969	52,613	23,234	102,276	31,733	47,949	596,972
- Others	24,373	56,547	146,359	230,540	43,087	72,693	351,480	128,314	28,551	9,864	42,786	12,298	100,097	42,097	43,006	92,421	22,287	168,279	1,615,079
Spain	8,567	33,181	62,473	65,704	21,996	27,580	91,535	50,296	16,126	7,589	35,958	10,840	57,525	75,810	73,323	132,129	77,539	268,760	1,116,931
- Spanish Mainland	3,683	14,564	37,284	21,546	12,809	15,929	62,155	23,797	6,310	3,031	17,777	2,038	13,719	62,242	52,947	88,411	70,363	121,359	629,964
- Canary Islands	4,884	18,617	25,189	44,158	9,187	11,651	29,380	26,499	9,816	4,558	18,181	8,802	43,806	13,568	20,376	43,718	7,176	147,401	486,967
Total	64,987	196,613	472,137	693,848	159,718	201,969	938,950	356,413	72,719	36,412	161,118	48,809	274,593	179,823	148,881	363,480	145,650	570,919	5,087,039

Tourist areas	Adeje turístico					Las Américas - Los Cristianos			Abona			Isora		Puerto de la Cruz turístico			Others	Tenerife	
	Callao Salvaje	Playa Paraiso	Playa de El Duque	Costa Adeje	Torviscas-Fañabé Alto	Las Américas-Adeje	Las Américas-Arona	Los Cristianos	Costa del Silencio	El Médano	Golf del Sur	Los Gigantes	Puerto Santiago	Playa Jardín-Maritim	Conjunto histórico	Taoro-La Paz	Martínez		
International	86.8%	83.1%	86.8%	90.5%	86.2%	86.3%	90.3%	85.9%	77.8%	79.2%	77.7%	77.8%	79.1%	57.8%	50.8%	63.6%	46.8%	52.9%	78.0%
- United Kingdom	41.5%	40.5%	39.5%	43.5%	56.7%	43.6%	47.7%	44.0%	32.5%	26.0%	43.4%	49.1%	35.7%	5.2%	6.3%	10.1%	9.7%	15.1%	34.6%
- Germany	7.8%	13.9%	16.3%	13.9%	2.5%	6.7%	5.1%	5.9%	6.0%	26.1%	7.7%	3.5%	6.9%	29.3%	15.6%	28.1%	21.8%	8.4%	11.7%
- Others	37.5%	28.8%	31.0%	33.2%	27.0%	36.0%	37.4%	36.0%	39.3%	27.1%	26.6%	25.2%	36.5%	23.4%	28.9%	25.4%	15.3%	29.5%	31.7%
Spain	13.2%	16.9%	13.2%	9.5%	13.8%	13.7%	9.7%	14.1%	22.2%	20.8%	22.3%	22.2%	20.9%	42.2%	49.2%	36.4%	53.2%	47.1%	22.0%
- Spanish Mainland	5.7%	7.4%	7.9%	3.1%	8.0%	7.9%	6.6%	6.7%	8.7%	8.3%	11.0%	4.2%	5.0%	34.6%	35.6%	24.3%	48.3%	21.3%	12.4%
- Canary Islands	7.5%	9.5%	5.3%	6.4%	5.8%	5.8%	3.1%	7.4%	13.5%	12.5%	11.3%	18.0%	16.0%	7.5%	13.7%	12.0%	4.9%	25.8%	9.6%
Total	100%	100%	100%	100%	100%	100%	100%	100%	100%	100%	100%	100%	100%	100%	100%	100%	100%	100%	100%



Tourist accommodation indicators by tourist areas

Tenerife (2018)

Other indicators

Tourist areas		Adeje turístico					Las Américas - Los Cristianos			Abona			Isora		Puerto de la Cruz turístico				Others	Tenerife
Description	Callao Salvaje	Playa Paraiso	Playa de El Duque	Costa Adeje	Torviscas-Fañabé Alto	Las Américas-Adeje	Las Américas-Arona	Los Cristianos	Costa del Silencio	El Médano	Golf del Sur	Los Gigantes	Puerto Santiago	Playa Jardín-Maritim	Conjunto histórico	Taoro-La Paz	Martínez			
Bednights																				
International	423,649	1,147,732	3,143,461	5,112,253	1,108,915	1,348,941	6,944,874	2,409,815	434,729	196,470	988,130	295,484	1,833,033	891,331	581,477	1,998,316	587,402	1,621,836	31,067,848	
- United Kingdom	184,924	509,515	1,305,526	2,325,842	711,199	646,355	3,514,215	1,240,885	180,355	67,788	562,482	204,649	888,070	78,657	63,830	287,480	95,062	537,490	13,404,324	
- Germany	47,991	223,457	665,270	877,818	29,127	124,210	445,951	167,280	32,636	75,481	110,115	10,856	167,230	497,050	228,518	1,022,637	267,394	338,461	5,331,482	
- Others	190,734	414,760	1,172,665	1,908,593	368,589	578,376	2,984,708	1,001,650	221,738	53,201	315,533	79,979	777,733	315,624	289,129	688,199	224,946	745,885	12,332,042	
Spain	42,274	116,785	297,295	293,126	112,943	138,339	473,330	215,899	103,723	24,516	176,531	31,697	230,663	420,425	331,753	695,963	441,650	777,362	4,924,274	
- Spanish Mainland	24,949	70,256	198,518	130,220	68,846	90,296	361,144	94,327	27,644	11,910	108,865	7,648	59,917	376,356	280,663	556,883	417,002	427,242	3,312,686	
- Canary Islands	17,325	46,529	98,777	162,906	44,097	48,043	112,186	121,572	76,079	12,606	67,666	24,049	170,746	44,069	51,090	139,080	24,648	350,120	1,611,588	
Total	465,923	1,264,517	3,440,756	5,405,379	1,221,858	1,487,280	7,418,204	2,625,714	538,452	220,986	1,164,661	327,181	2,063,696	1,311,756	913,230	2,694,279	1,029,052	2,399,198	35,992,122	
Lenght of stay																				
International	7.5	7.0	7.7	8.1	8.1	7.7	8.2	7.9	7.7	6.8	7.9	7.8	8.4	8.6	7.7	8.6	8.6	5.4	7.8	
- United Kingdom	6.9	6.4	7.0	7.7	7.9	7.3	7.9	7.9	7.6	7.2	8.0	8.5	9.1	8.5	6.9	7.8	6.8	6.3	7.6	
- Germany	9.5	8.2	8.7	9.1	7.3	9.1	9.3	7.9	7.4	7.9	8.9	6.4	8.8	9.5	9.8	10.0	8.4	7.1	8.9	
Spain	4.9	3.5	4.8	4.5	5.1	5.0	5.2	4.3	6.4	3.2	4.9	2.9	4.0	5.6	4.5	5.3	5.7	2.9	4.4	
- Canary Islands	3.6	2.5	3.9	3.7	4.8	4.1	3.8	4.6	7.8	2.8	3.7	2.7	3.9	3.3	2.5	3.2	3.4	2.4	3.3	
Total	7.2	6.4	7.3	7.8	7.7	7.4	7.9	7.4	7.4	6.1	7.2	6.7	7.5	7.3	6.1	7.4	7.1	4.2	7.1	
Accommodation establishments																				
Accommodation establishments	7	6	22	39	16	12	56	42	12	13	15	7	19	16	30	30	8	76	426	
Bed-spaces	2,219	4,642	11,999	18,690	4,835	5,371	27,699	11,754	2,339	935	4,201	1,226	7,012	4,844	3,711	10,649	3,567	11,528	137,221	
ADR (€)	66.3	112.2	146.7	90.1	59.5	95.4	84.7	86.5	68.1	67.2	98.0	92.9	90.1	42.0	41.0	60.3	47.6	97.8	87.0	
RevPar (€)	54.2	87.8	119.2	76.1	47.4	82.1	72.2	66.7	54.6	50.1	81.5	69.0	71.8	33.9	31.4	49.1	41.2	68.7	70.56	
Bed-space occupancy rate (%)	57.5	74.6	78.6	79.2	69.2	75.9	73.4	61.2	63.1	64.8	76.0	73.1	80.6	74.2	67.4	69.3	79.0	57.0	71.86	
Occupancy rate per room/apt. (%)	81.7	78.3	81.3	84.5	79.6	86.1	85.3	77.2	80.2	74.7	83.2	74.2	79.7	80.7	76.6	81.4	86.6	70.2	81.09	
Tourist population ⁽¹⁾	1,277	3,464	9,427	14,809	3,348	4,075	20,324	7,194	1,475	605	3,191	896	5,654	3,594	2,502	7,382	2,819	6,573	98,609	
Employment	267	1,168	3,449	3,058	680	776	3,777	1,261	191	116	637	227	1,210	729	453	1,733	797	2,666	23,195	

Source: Encuestas de Alojamiento Turístico (ISTAC).

⁽¹⁾ Equivalent tourist population is obtained by dividing the total number of bednights during the reference period by 365 days (366 in case of leap year).