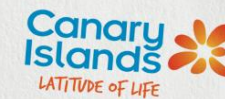


# Tourist accommodation indicators by tourist areas

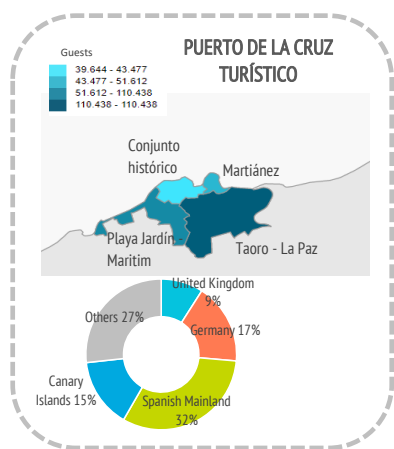
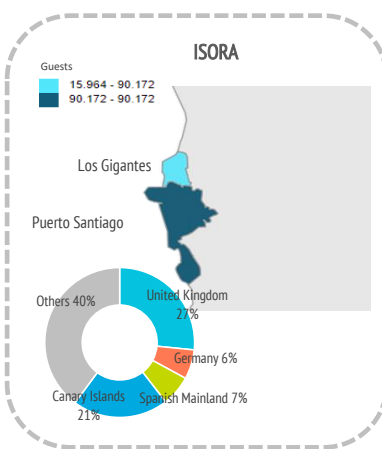
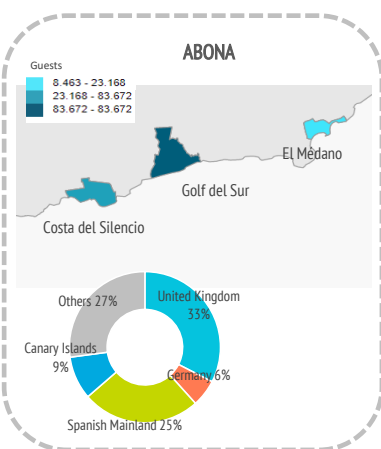
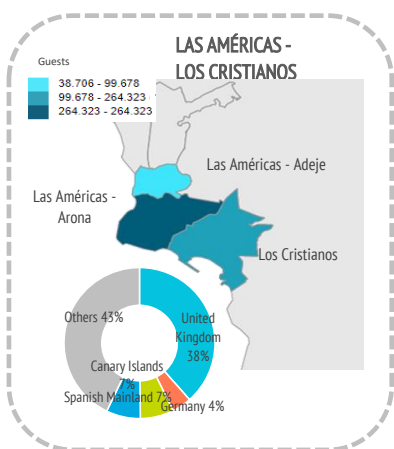
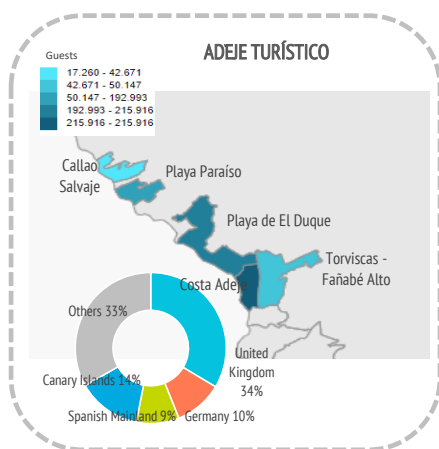
## Tenerife (2020)



### GUESTS IN ACCOMMODATION

Tourist areas	Adeje turístico					Las Américas - Los Cristianos			Abona			Isora		Puerto de la Cruz turístico			Others	Tenerife	
	Callao Salvaje	Playa Paraiso	Playa de El Duque	Costa Adeje	Torviscas-Fañabé Alto	Las Américas-Adeje	Las Américas-Arona	Los Cristianos	Costa del Silencio	El Médano	Golf del Sur	Los Gigantes	Puerto Santiago	Playa Jardín-Maritim	Conjunto histórico	Taoro-La Paz	Martínez		
<b>International</b>	14,937	44,762	139,364	171,810	29,738	33,514	226,401	84,344	17,686	7,159	50,623	11,931	65,288	25,598	20,395	65,243	19,028	107,971	<b>1,135,792</b>
- United Kingdom	5,354	20,703	56,440	73,681	18,096	15,108	95,181	44,637	6,673	2,412	28,445	5,835	22,374	2,512	3,119	12,769	3,778	26,130	443,247
- Germany	932	6,545	22,986	22,435	843	1,912	10,452	4,440	1,041	1,925	3,706	701	6,041	10,183	5,744	19,731	6,872	13,993	140,482
- Others	8,651	17,514	59,938	75,694	10,799	16,494	120,768	35,267	9,972	2,822	18,472	5,395	36,873	12,903	11,532	32,743	8,378	67,848	552,063
<b>Spain</b>	2,323	5,385	53,629	44,106	12,933	5,192	37,922	15,334	5,482	1,304	33,049	4,033	24,884	26,014	19,249	45,195	24,449	130,666	<b>491,149</b>
- Spanish Mainland	1,159	2,652	24,914	12,871	5,795	2,599	21,463	4,878	2,422	406	26,342	931	6,048	19,335	9,613	28,492	20,839	65,596	256,355
- Canary Islands	1,164	2,733	28,715	31,235	7,138	2,593	16,459	10,456	3,060	898	6,707	3,102	18,836	6,679	9,636	16,703	3,610	65,070	234,794
<b>Total</b>	<b>17,260</b>	<b>50,147</b>	<b>192,993</b>	<b>215,916</b>	<b>42,671</b>	<b>38,706</b>	<b>264,323</b>	<b>99,678</b>	<b>23,168</b>	<b>8,463</b>	<b>83,672</b>	<b>15,964</b>	<b>90,172</b>	<b>51,612</b>	<b>39,644</b>	<b>110,438</b>	<b>43,477</b>	<b>238,637</b>	<b>1,626,941</b>

Tourist areas	Adeje turístico					Las Américas - Los Cristianos			Abona			Isora		Puerto de la Cruz turístico			Others	Tenerife	
	Callao Salvaje	Playa Paraiso	Playa de El Duque	Costa Adeje	Torviscas-Fañabé Alto	Las Américas-Adeje	Las Américas-Arona	Los Cristianos	Costa del Silencio	El Médano	Golf del Sur	Los Gigantes	Puerto Santiago	Playa Jardín-Maritim	Conjunto histórico	Taoro-La Paz	Martínez		
<b>International</b>	86.5%	89.3%	72.2%	79.6%	69.7%	86.6%	85.7%	84.6%	76.3%	84.6%	60.5%	74.7%	72.4%	49.6%	51.4%	59.1%	43.8%	45.2%	<b>69.8%</b>
- United Kingdom	31.0%	41.3%	29.2%	34.1%	42.4%	39.0%	36.0%	44.8%	28.8%	28.5%	34.0%	36.6%	24.8%	4.9%	7.9%	11.6%	8.7%	10.9%	27.2%
- Germany	5.4%	13.1%	11.9%	10.4%	2.0%	4.9%	4.0%	4.5%	4.5%	22.7%	4.4%	4.4%	6.7%	19.7%	14.5%	17.9%	15.8%	5.9%	8.6%
- Others	50.1%	34.9%	31.1%	35.1%	25.3%	42.6%	45.7%	35.4%	43.0%	33.3%	22.1%	33.8%	40.9%	25.0%	29.1%	29.6%	19.3%	28.4%	33.9%
<b>Spain</b>	13.5%	10.7%	27.8%	20.4%	30.3%	13.4%	14.3%	15.4%	23.7%	15.4%	39.5%	25.3%	27.6%	50.4%	48.6%	40.9%	56.2%	54.8%	<b>30.2%</b>
- Spanish Mainland	6.7%	5.3%	12.9%	6.0%	13.6%	6.7%	8.1%	4.9%	10.5%	4.8%	31.5%	5.8%	6.7%	37.5%	24.2%	25.8%	47.9%	27.5%	15.8%
- Canary Islands	6.7%	5.4%	14.9%	14.5%	16.7%	6.7%	6.2%	10.5%	13.2%	10.6%	8.0%	19.4%	20.9%	12.9%	24.3%	15.1%	8.3%	27.3%	14.4%
<b>Total</b>	<b>100%</b>	<b>100%</b>	<b>100%</b>	<b>100%</b>	<b>100%</b>	<b>100%</b>	<b>100%</b>	<b>100%</b>	<b>100%</b>	<b>100%</b>	<b>100%</b>	<b>100%</b>	<b>100%</b>	<b>100%</b>	<b>100%</b>	<b>100%</b>	<b>100%</b>	<b>100%</b>	<b>100%</b>



# Tourist accommodation indicators by tourist areas

## Tenerife (2020)

### Other indicators

Tourist areas		Adeje turístico					Las Américas - Los Cristianos			Abona			Isora		Puerto de la Cruz turístico				Others	Tenerife
Description	Callao Salvaje	Playa Paraíso	Playa de El Duque	Costa Adeje	Torviscas-Fañabé Alto	Las Américas-Adeje	Las Américas-Arona	Los Cristianos	Costa del Silencio	El Médano	Golf del Sur	Los Gigantes	Puerto Santiago	Playa Jardín-Maritim	Conjunto histórico	Taoro-La Paz	Martínez			
<b>Bednights</b>																				
International	130,133	339,508	1,092,043	1,429,246	259,958	259,177	1,831,192	724,307	132,444	47,231	346,003	98,000	494,896	245,489	155,801	567,789	166,332	524,534	<b>8,844,083</b>	
- United Kingdom	49,072	145,505	412,283	632,999	157,722	104,660	721,457	399,695	52,948	16,684	199,707	52,725	189,473	20,512	19,772	96,274	30,989	148,735	3,451,212	
- Germany	9,422	56,765	195,026	210,221	7,543	18,837	94,870	38,710	6,823	13,274	28,345	5,374	47,774	118,888	65,455	224,011	63,914	94,582	1,299,834	
- Others	71,639	137,238	484,734	586,026	94,693	135,680	1,014,865	285,902	72,673	17,273	117,951	39,901	257,649	106,089	70,574	247,504	71,429	281,217	4,093,037	
Spain	12,020	16,393	193,033	145,750	45,614	27,203	179,572	65,109	33,533	4,218	132,346	11,159	72,159	108,977	65,842	209,591	122,172	327,833	<b>1,772,524</b>	
- Spanish Mainland	7,873	10,546	109,637	56,678	23,404	17,131	126,094	27,157	12,084	1,323	111,496	4,166	22,613	94,755	42,806	164,713	113,058	188,082	1,133,616	
- Canary Islands	4,147	5,847	83,396	89,072	22,210	10,072	53,478	37,952	21,449	2,895	20,850	6,993	49,546	14,222	23,036	44,878	9,114	139,751	638,908	
<b>Total</b>	<b>142,153</b>	<b>355,901</b>	<b>1,285,076</b>	<b>1,574,996</b>	<b>305,572</b>	<b>286,380</b>	<b>2,010,764</b>	<b>789,416</b>	<b>165,977</b>	<b>51,449</b>	<b>478,349</b>	<b>109,159</b>	<b>567,055</b>	<b>354,466</b>	<b>221,643</b>	<b>777,380</b>	<b>288,504</b>	<b>852,367</b>	<b>10,616,607</b>	
<b>Length of stay</b>																				
International	8.7	7.6	7.8	8.3	8.7	7.7	8.1	8.6	7.5	6.6	6.8	8.2	7.6	9.6	7.6	8.7	8.7	4.9	<b>7.8</b>	
- United Kingdom	9.2	7.0	7.3	8.6	8.7	6.9	7.6	9.0	7.9	6.9	7.0	9.0	8.5	8.2	6.3	7.5	8.2	5.7	7.8	
- Germany	10.1	8.7	8.5	9.4	9.0	9.9	9.1	8.7	6.6	6.9	7.7	7.7	7.9	11.7	11.4	11.4	9.3	6.8	9.3	
Spain	5.2	3.0	3.6	3.3	3.5	5.2	4.7	4.3	6.1	3.2	4.0	2.8	2.9	4.2	3.4	4.6	5.0	2.5	<b>3.6</b>	
- Canary Islands	3.6	2.1	2.9	2.9	3.1	3.9	3.3	3.6	7.0	3.2	3.1	2.3	2.6	2.1	2.4	2.7	2.5	2.2	2.7	
<b>Total</b>	<b>8.2</b>	<b>7.1</b>	<b>6.7</b>	<b>7.3</b>	<b>7.2</b>	<b>7.4</b>	<b>7.6</b>	<b>7.9</b>	<b>7.2</b>	<b>6.1</b>	<b>5.7</b>	<b>6.8</b>	<b>6.3</b>	<b>6.9</b>	<b>5.6</b>	<b>7.0</b>	<b>6.6</b>	<b>3.6</b>	<b>6.5</b>	
<b>Accommodation establishments</b>	4	2	13	20	5	4	23	18	5	4	6	3	8	6	12	14	3	35	<b>185</b>	
<b>Bed-spaces</b>	1,008	1,723	7,460	9,808	1,869	1,825	13,125	6,201	1,292	309	2,290	575	3,589	1,979	1,461	4,854	1,491	7,416	<b>68,275</b>	
<b>ADR (€)</b>	69.1	122.3	160.9	101.1	67.8	79.1	93.1	89.1	41.6	77.5	103.3	98.2	95.6	48.0	40.4	58.3	59.9	87.2	<b>94.0</b>	
<b>RevPar (€)</b>	33.2	76.4	79.3	50.9	36.8	45.2	47.6	41.8	22.7	42.8	63.7	55.5	46.9	25.4	20.8	31.2	31.2	38.6	<b>47.77</b>	
<b>Total revenue (€ million)</b>	4.2	21.6	98.7	74.0	8.1	11.5	88.4	32.1	3.4	2.2	20.1	4.5	24.9	8.6	5.7	25.2	8.9	42.4	<b>485</b>	
<b>Bed-space occupancy rate (%)</b>	38.6	56.6	47.2	44.0	44.8	43.0	42.0	34.9	35.2	45.6	57.2	52.0	43.3	49.1	41.6	43.9	53.0	31.5	<b>42.6</b>	
<b>Occupancy rate per room/apt. (%)</b>	48.3	62.5	49.4	50.5	54.3	57.1	51.2	47.0	54.8	55.1	61.7	56.6	49.3	53.0	51.5	53.6	52.1	44.4	<b>50.94</b>	
<b>Tourist population <sup>(1)</sup></b>	389	975	3,521	4,315	837	785	5,509	2,163	455	141	1,311	299	1,554	971	607	2,130	790	2,335	<b>29,087</b>	
<b>Employment</b>	134	403	2,238	1,424	316	216	1,546	595	118	39	627	87	491	316	182	687	270	1,695	<b>11,384</b>	

Source: Encuestas de Alojamiento Turístico (ISTAC).

<sup>(1)</sup> Equivalent tourist population is obtained by dividing the total number of bednights during the reference period by 365 days (366 in case of leap year).