

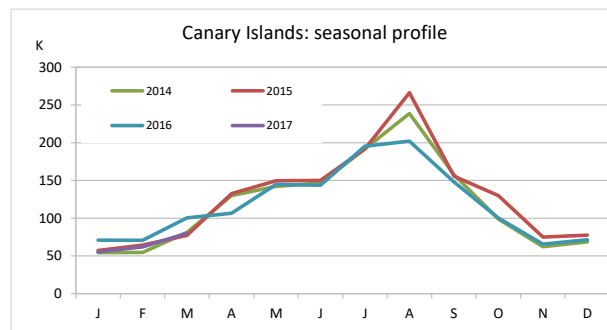
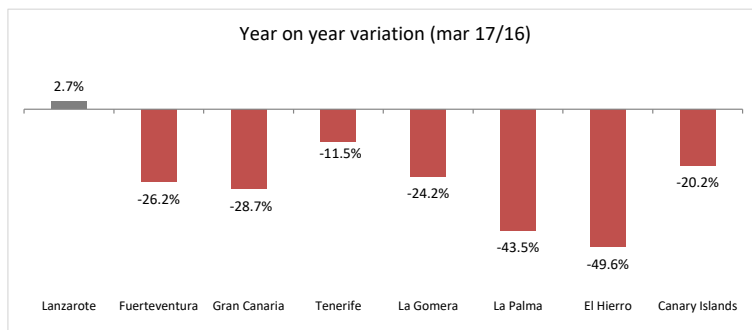
Domestic tourism

March 2017



Canary Islands residents staying in tourist accommodation by island of stay

	Lanzarote	Fuerteventura	Gran Canaria	Tenerife	La Gomera	La Palma	El Hierro	Canary Islands
March 2014	6,770	6,237	30,378	28,336	2,746	5,846	760	81,073
March 2015	9,640	7,059	26,718	26,274	3,190	3,827	647	77,355
March 2016	11,949	10,160	33,854	32,134	4,552	6,532	1,158	100,339
March 2017	12,270	7,501	24,145	28,435	3,450	3,689	584	80,074
% tourists from that island	33.6%	28.9%	1545.6%	17.5%	2.9%	15.7%	0.0%	100%
Change, 17-16	321	-2,659	-9,709	-3,699	-1,102	-2,843	-574	-20,265
Change, % 17-16	2.7%	-26.2%	-28.7%	-11.5%	-24.2%	-43.5%	-49.6%	-20.2%



Canary Islands residents staying in tourist accommodation by island of residence and island of stay

		ISLAND OF STAY							CANARY ISLANDS
		Lanzarote	Fuerteventura	Gran Canaria	Tenerife	La Gomera	La Palma	El Hierro	
ISLAND OF RESIDENCE	Lanzarote	4,117	175	1,700	619	16	612	206	7,445
	Fuerteventura	1,018	2,169	1,049	406	0	105	0	4,747
	Gran Canaria	35,265	50,270	373,193	72,926	3,467	12,570	1,489	549,180
	Tenerife	1,018	2,344	4,971	15,181	3,198	1,840	310	28,862
	La Gomera	4	0	6	1,587	101	23	0	1,721
	La Palma	730	14	1,031	4,067	41	578	0	6,461
	El Hierro	0	0	266	1,115	0	6	0	1,387
	CANARY ISLANDS	12,270	7,501	24,145	28,435	3,450	3,689	584	80,074

Canary Islands residents travelling to other islands (residents of each island are excluded)

	Lanzarote	Fuerteventura	Gran Canaria	Tenerife	La Gomera	La Palma	El Hierro	CANARY ISLANDS
Outbound tourism	3,328	2,578	175,987	13,681	1,620	5,883	1,387	204,464
Inbound tourism	38,035	52,803	9,023	80,720	6,722	15,156	2,005	204,464
Net balance	34,707	50,225	-166,964	67,039	5,102	9,273	618	0

Distribution by island of residence

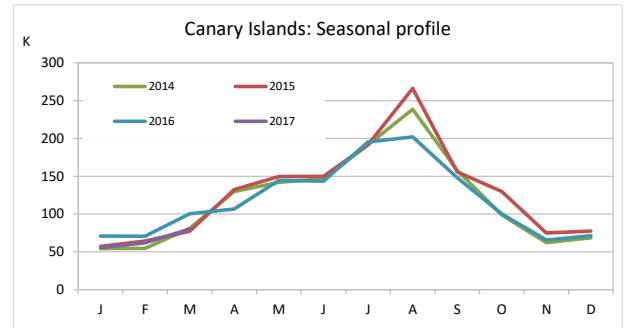
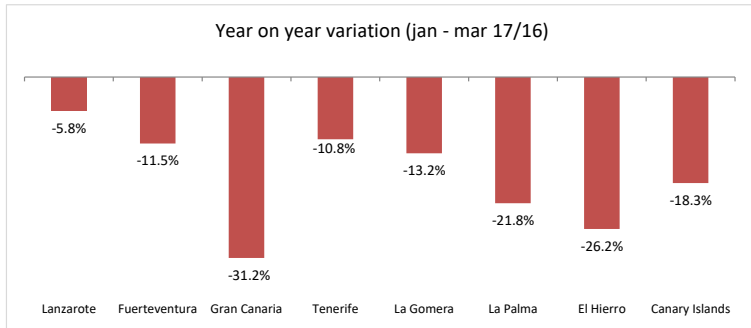
		ISLAND OF STAY							CANARY ISLANDS
		Lanzarote	Fuerteventura	Gran Canaria	Tenerife	La Gomera	La Palma	El Hierro	
ISLAND OF RESIDENCE	Lanzarote	33.6%	2.3%	7.0%	2.2%	0.5%	16.6%	35.3%	9.3%
	Fuerteventura	8.3%	28.9%	4.3%	1.4%	0.0%	2.8%	0.0%	5.9%
	Gran Canaria	287.4%	670.2%	1545.6%	256.5%	100.5%	340.7%	255.0%	685.8%
	Tenerife	8.3%	31.2%	20.6%	53.4%	92.7%	49.9%	53.1%	36.0%
	La Gomera	0.0%	0.0%	0.0%	5.6%	2.9%	0.6%	0.0%	2.1%
	La Palma	5.9%	0.2%	4.3%	14.3%	1.2%	15.7%	0.0%	8.1%
	El Hierro	0.0%	0.0%	1.1%	3.9%	0.0%	0.2%	0.0%	1.7%
	CANARY ISLANDS	100.0%	100.0%	100.0%	100.0%	100.0%	100.0%	100.0%	100.0%

Distribution by island of stay

		ISLAND OF STAY							CANARY ISLANDS
		Lanzarote	Fuerteventura	Gran Canaria	Tenerife	La Gomera	La Palma	El Hierro	
ISLAND OF RESIDENCE	Lanzarote	55.3%	2.4%	22.8%	8.3%	0.2%	8.2%	2.8%	100.0%
	Fuerteventura	21.4%	45.7%	22.1%	8.6%	0.0%	2.2%	0.0%	100.0%
	Gran Canaria	6.4%	9.2%	68.0%	13.3%	0.6%	2.3%	0.3%	100.0%
	Tenerife	3.5%	8.1%	17.2%	52.6%	11.1%	6.4%	1.1%	100.0%
	La Gomera	0.2%	0.0%	0.3%	92.2%	5.9%	1.3%	0.0%	100.0%
	La Palma	11.3%	0.2%	16.0%	62.9%	0.6%	8.9%	0.0%	100.0%
	El Hierro	0.0%	0.0%	19.2%	80.4%	0.0%	0.4%	0.0%	100.0%
	CANARY ISLANDS	15.3%	9.4%	30.2%	35.5%	4.3%	4.6%	0.7%	100.0%

Canary Islands residents staying in tourist accommodation by island of stay

	Lanzarote	Fuerteventura	Gran Canaria	Tenerife	La Gomera	La Palma	El Hierro	Canary Islands
Jan-Mar 2014	18,356	16,409	69,562	62,949	7,857	12,963	2,103	190,199
Jan-Mar 2015	20,594	16,909	64,491	71,928	10,111	12,883	2,008	198,924
Jan-Mar 2016	27,715	21,765	83,743	79,770	11,219	14,952	2,644	241,808
Jan-Mar 2017	26,096	19,264	57,581	71,187	9,740	11,694	1,950	197,512
% tourists from that island	45.2%	32.7%	62.9%	52.4%	5.5%	10.6%	0.2%	100%
Change, 17-16	-1,619	-2,501	-26,162	-8,583	-1,479	-3,258	-694	-44,296
Change, % 17-16	-5.8%	-11.5%	-31.2%	-10.8%	-13.2%	-21.8%	-26.2%	-18.3%



Canary Islands residents staying in tourist accommodation by island of residence and island of stay

		ISLAND OF STAY							CANARY ISLANDS
		Lanzarote	Fuerteventura	Gran Canaria	Tenerife	La Gomera	La Palma	El Hierro	
ISLAND OF RESIDENCE	Lanzarote	11,802	649	5,334	1,584	16	949	206	20,540
	Fuerteventura	1,653	6,302	2,806	808	26	414	0	12,009
	Gran Canaria	8,572	9,097	36,237	13,487	578	2,079	259	70,309
	Tenerife	2,864	3,192	10,092	37,330	8,381	6,874	1,368	70,101
	La Gomera	4	0	8	4,331	531	111	0	4,985
	La Palma	901	20	2,806	10,911	207	1,245	114	16,204
	El Hierro	300	4	298	2,736	1	22	3	3,364
	CANARY ISLANDS	26,096	19,264	57,581	71,187	9,740	11,694	1,950	197,512

Canary Islands residents travelling to other islands (residents of each island are excluded)

	Lanzarote	Fuerteventura	Gran Canaria	Tenerife	La Gomera	La Palma	El Hierro	CANARY ISLANDS
Outbound tourism	8,738	5,707	34,072	32,771	4,454	14,959	3,361	104,062
Inbound tourism	14,294	12,962	21,344	33,857	9,209	10,449	1,947	104,062
Net balance	5,556	7,255	-12,728	1,086	4,755	-4,510	-1,414	0

Distribution by island of residence

		ISLAND OF STAY							CANARY ISLANDS
		Lanzarote	Fuerteventura	Gran Canaria	Tenerife	La Gomera	La Palma	El Hierro	
ISLAND OF RESIDENCE	Lanzarote	45.2%	3.4%	9.3%	2.2%	0.2%	8.1%	10.6%	10.4%
	Fuerteventura	6.3%	32.7%	4.9%	1.1%	0.3%	3.5%	0.0%	6.1%
	Gran Canaria	32.8%	47.2%	62.9%	18.9%	5.9%	17.8%	13.3%	35.6%
	Tenerife	11.0%	16.6%	17.5%	52.4%	86.0%	58.8%	70.2%	35.5%
	La Gomera	0.0%	0.0%	0.0%	6.1%	5.5%	0.9%	0.0%	2.5%
	La Palma	3.5%	0.1%	4.9%	15.3%	2.1%	10.6%	5.8%	8.2%
	El Hierro	1.1%	0.0%	0.5%	3.8%	0.0%	0.2%	0.2%	1.7%
	CANARY ISLANDS	100.0%	100.0%	100.0%	100.0%	100.0%	100.0%	100.0%	100.0%

Distribution by island of stay

		ISLAND OF STAY							CANARY ISLANDS
		Lanzarote	Fuerteventura	Gran Canaria	Tenerife	La Gomera	La Palma	El Hierro	
ISLAND OF RESIDENCE	Lanzarote	57.5%	3.2%	26.0%	7.7%	0.1%	4.6%	1.0%	100.0%
	Fuerteventura	13.8%	52.5%	23.4%	6.7%	0.2%	3.4%	0.0%	100.0%
	Gran Canaria	12.2%	12.9%	51.5%	19.2%	0.8%	3.0%	0.4%	100.0%
	Tenerife	4.1%	4.6%	14.4%	53.3%	12.0%	9.8%	2.0%	100.0%
	La Gomera	0.1%	0.0%	0.2%	86.9%	10.7%	2.2%	0.0%	100.0%
	La Palma	5.6%	0.1%	17.3%	67.3%	1.3%	7.7%	0.7%	100.0%
	El Hierro	8.9%	0.1%	8.9%	81.3%	0.0%	0.7%	0.1%	100.0%
	CANARY ISLANDS	13.2%	9.8%	29.2%	36.0%	4.9%	5.9%	1.0%	100.0%